



**SOLD**

**SOLD IN 6 DAYS BY AGGIE SERAFIN!**

Do you need help with your property?  
Aggie Serafin -0431 171 409

This original 1966 Circa home sits on a generous, flat allotment of approx. 610m<sup>2</sup>, and approx. 18m<sup>2</sup> frontage is ready for its next homeowners.

Superbly located on the fringe of Parafield Gardens and only minutes to ever so popular Mawson lakes district, this well-cared-for home offers endless possibilities at hand.

With an option to suit many property pursuits, grab your chance to build your dream home (STCC), upsize, downsize, renovate, extend, or rent out and invest if you wish. With so many choices at hand, you surely will find the perfect one for you.

Charming Contemporary 3 br family home boasts three comfortable bedrooms and a master bedroom with floor-to-ceiling built-in robes. Home is perfect for a growing family, or those who love to entertain guests. Keeping comfortable all year round is made easy with air conditioning and heating in most areas.

You'll love the lounge/living room which is just perfect for relaxing after a long day at work. The lovely, updated kitchen with gas cooking, double sink and range hood, a skylight, and plenty of cupboard space is the way to go.

A charming and cozy dining nook is adjacent to the kitchen, making it ideal for entertaining guests, romantic candlelight dinners, and that homey feeling.

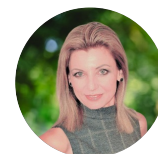
The property also features a verandah and an undercover area for hosting events. Additionally, there is secure undercover parking to keep everyone happy with a large garage, a carport, and a space for extra cars.

It has brought many years of joy to those who have lived here for 2 generations, and now it is

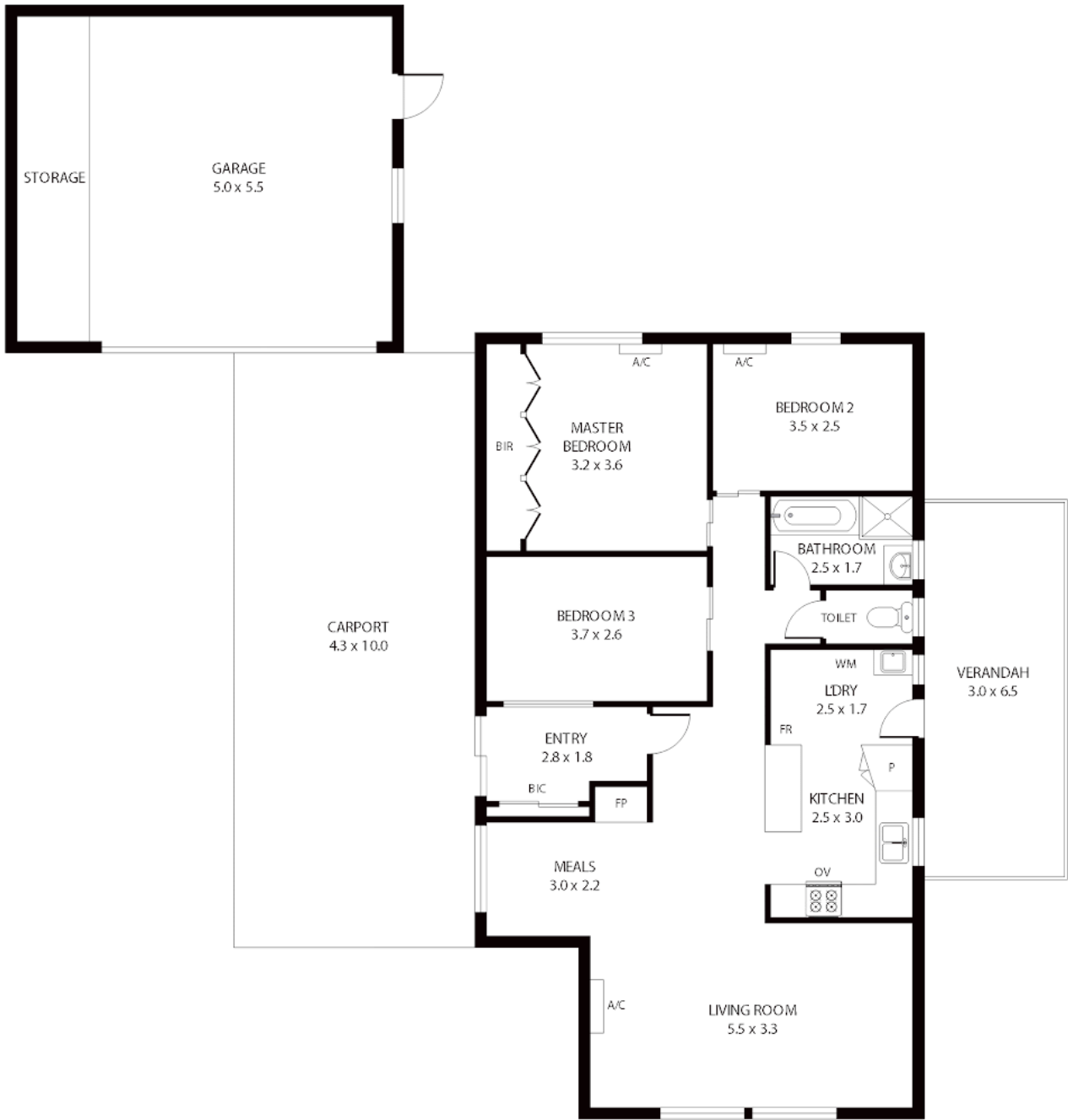
**3 BED | 1 BATH | 3 CAR**

**PRICE:**  
\$520,000

**OPEN FOR INSPECTION:**  
N/A



**Aggie Serafin-Anfiteatro**  
**0431171409**  
aggie.serafin@atrealty.com.au  
[www.atrealty.com.au](http://www.atrealty.com.au)  
RLA: 269823



101m<sup>2</sup>    82m<sup>2</sup>    26m<sup>2</sup>    42m<sup>2</sup>    20m<sup>2</sup>

Disclaimer: Please note this floor plan is for marketing purposes and is to be used as a guide only. All dimensions are estimates only and may not be exact measurements.

Whilst every attempt has been made to ensure the accuracy of the floor plan contained here, measurements of doors, windows, rooms and any other items are approximate and no responsibility is taken for any error, omission, or misstatement. This floor plan should be used as such by any prospective purchaser.

**Aggie Serafin-Anfiteatro**  
 0431171409  
 aggie.serafin@atrealty.com.au  
 www.atrealty.com.au

