

83/68 VILLAGE DRIVE, BREAKFAST POINT, NSW, 2137

3 FOR FREE*
SPECIAL RENTAL OFFER

We will, we will rock your value.

FOR RENT FREE letting fee for first time

FOR RENT FREE three months management for first tenancy

FOR RENT FREE advertising for first time

* Terms and Conditions apply, For a limited time only

Jeremy Yuen | 0412 406 039
jeremy@atrealty.com.au

Experience, Dedication & Results

3 FOR FREE*

We will, we will rock your value.

FOR SALE FROM 1% low rate

FOR SALE FREE internet advertising

FOR SALE FREE valuation

* Terms and Conditions apply, For a limited time only

Experience,

FOR LEASE

LEASED BY JEREMY YUEN IN ONE DAY, ANOTHER ONE PLEASE ,0412406039

Enjoy a relaxed and sophisticated lifestyle, footsteps to Breakfast Point's vibrant village centre from this exceptionally spacious One bedroom apartment plus large study, immersed in expansive views across the Village Green. Designed for easy living with a contemporary open plan, it boasts an array of stylish modern finishes and an abundance of natural light.

Expansive living/dining embracing a seamless outdoor flow
The sunlit, all-weather wraparound alfresco terrace
Sleek CaesarStone kitchen, stainless steel gas appliances
Large bedroom feature built-ins
Stylish fully tiled ensuite bathroom with bath and shower
Internal laundry, A/C, security car space
Metres to scenic waterside parks and city ferries
Access to the Country Club's superb recreational facilities

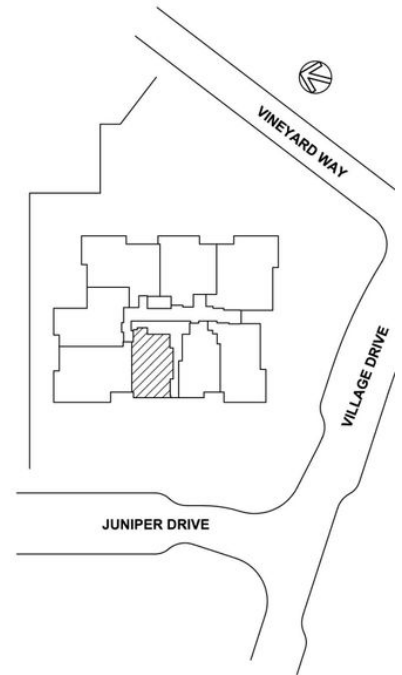
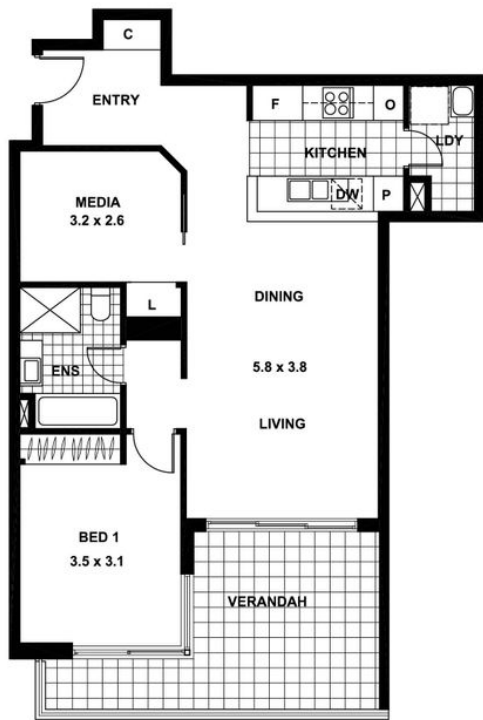
1 BED | 1 BATH | 1 CAR

PRICE:
\$599 per week

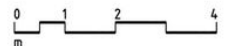
OPEN FOR INSPECTION:
N/A



Jeremy Yuen
0412406039
jeremy@atrealty.com.au
www.atrealty.com.au



FLOOR AREA	75 sq
VERANDAH AREA	17 sq
TOTAL	92 sq



ISSUE D: 17.03.06

GILES TRIBE ARCHITECT

Disclaimer: Please note this floor plan is for marketing purposes and is to be used as a guide only. All dimensions are estimates only and may not be exact measurements.