



SOLD

FIND YOUR DREAM HOME IN NEWBOROUGH

Are you looking for a home that offers quality and convenience in a great location? Look no further than this stunning four bedroom house, nestled in the desirable suburb of Newborough, Victoria.

This property is a great option for a family, with four bedrooms, two bathrooms and four carparks, all on a huge land size of 530m² (approx). The spacious house offers a formal dining or home office. The house is ready for you to move into, so you can start making it your home straight away. The interior has been designed to be light-filled and welcoming, with large windows allowing for plenty of natural light. The spacious, open plan living and meals areas are perfect for entertaining and spending quality time with family and friends.

The kitchen features modern appliances, plenty of bench and cupboard space, and an breakfast bar perfect for seating up to four.

The large master bedroom boasts a walk-in robe, ensuite, and the other three bedrooms have built-in robes and are serviced by the central bathroom.

The outdoor area of this property is also a great feature, with a large backyard and plenty of room for the kids to play. The established gardens provide a peaceful, tranquil feel, and the undercover alfresco area is great for entertaining.

You can enjoy the convenience of this property's location, with local schools, shops, parks and public transport all within easy reach. This is a great opportunity to secure a quality family home in an ideal location, so don't miss out!

4 BED | 2 BATH | 2 CAR

PRICE:
\$500,000

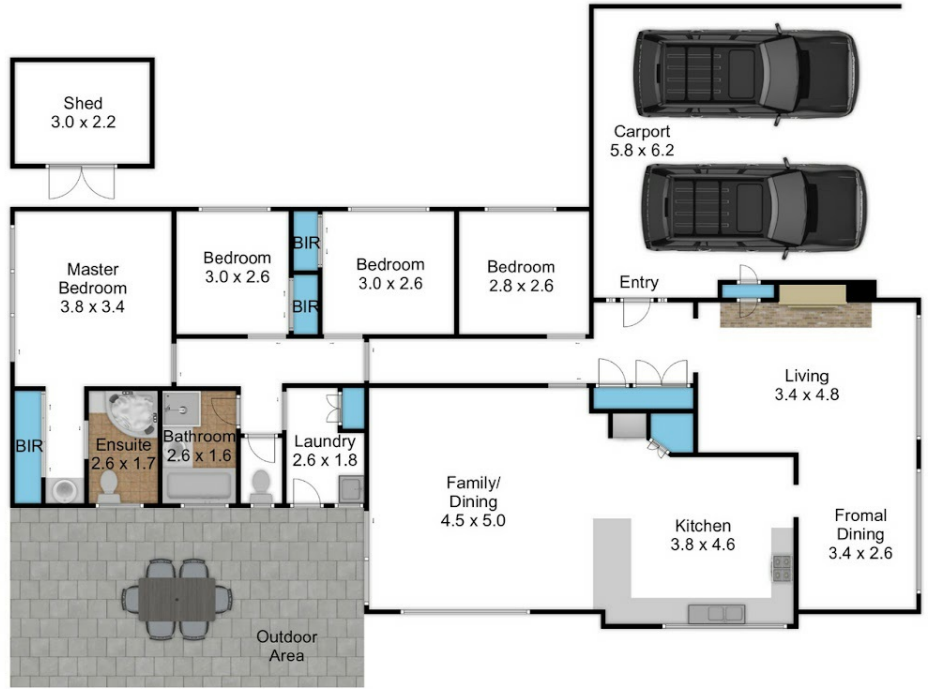
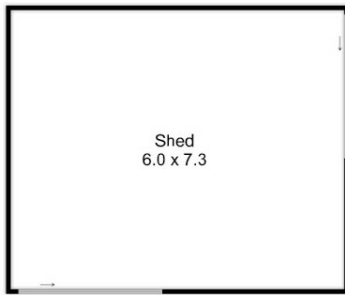
OPEN FOR INSPECTION:
N/A



Mel Ahearn
0409183763

mahearn@atrealty.com.au

atrealtypropertysalesgippsland.com.au



29 Stamford Street - Newborough



Disclaimer: Please note this floor plan is for marketing purposes and is to be used as a guide only. All dimensions are estimates only and may not be exact measurements.