



SOLD

CHARMING FAMILY OASIS - !

Looking for a property that really feels like a home?

This property is nestled within minutes walk of the centre of Grafton's shopping district and while set back from main traffic thoroughfares it houses a tropical, private and peaceful place to unwind.

A stylish mix of modern and traditional architecture this 4 bedroom, 2 bathroom home is situated on a generous 1325 square meters of land, providing plenty of room to move, play and entertain. It's the perfect home for a growing family with loads of flexible spaces under 3 meter high ceilings and a light and airy feel throughout.

The upper deck area is perfect for entertaining or just enjoying the view view the yard down to the in-ground swimming pool. With remote garage to extra high and long secure parking plus a great workshop, man cave and storage space along with fully fenced yard all provide a sense of security and privacy. Sheds provide even more storage in the yard and a bespoke studio will capture your imagination for a multitude of possible uses.

Indoors, you'll find a range of features to suit your needs, including built-in wardrobes, a dishwasher for convenience, an office nook for those who need to work from home, Air conditioning and floorboards throughout. There is also a rumpus room interacting with the bedrooms, great for the kids or visitors alike.

This stunning property is available for sale now so take advantage of this fantastic opportunity and make this property your own. Enquire now and start living the life you deserve.

Disclaimer: information contained herein is gathered from sources we believe to be reliable. The writer, @realty and its staff will not be held responsible for any act or omission arising from the accuracy of such material including property boundaries and floor plans. We cannot guarantee its accuracy and interested persons should rely on their own enquiries. Such enquiries should include, but in no way be limited to, and should be directed to, your financial adviser, legal representative, any local authorities, the Contract of Sale and any Residential Lease.

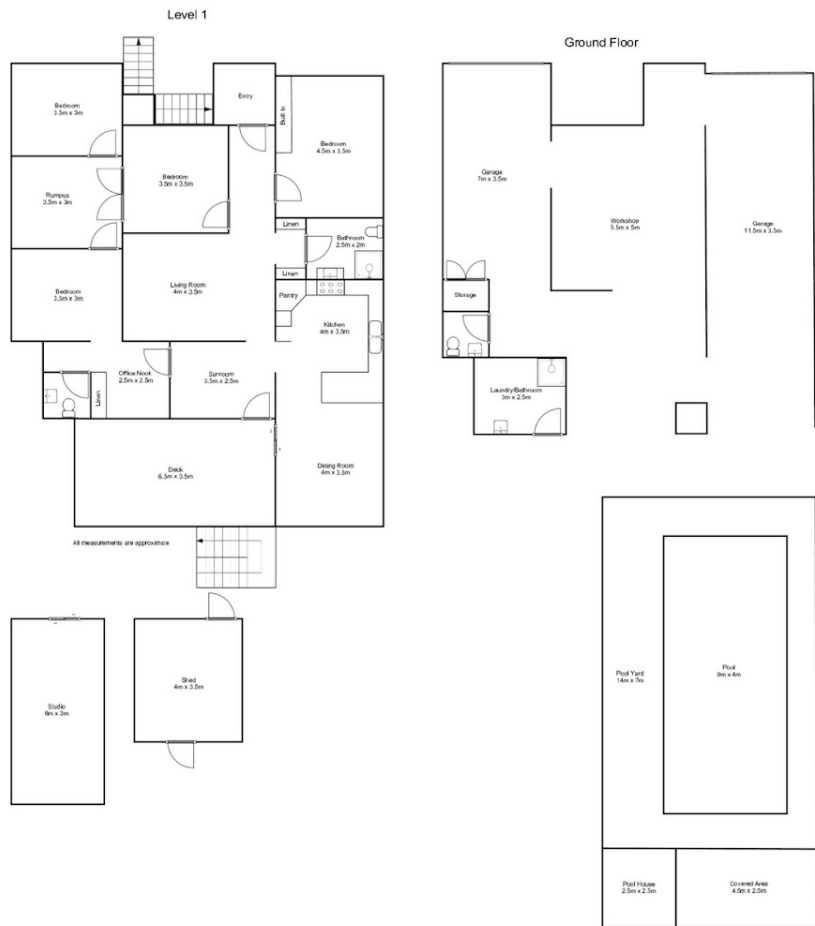
4 BED | 2 BATH | 3 CAR

PRICE:
\$650,000

OPEN FOR INSPECTION:
N/A



Ron Plowman
0422702214
hilltosea@atrealty.com.au
buytheseproperties.com.au



Disclaimer: Please note this floor plan is for marketing purposes and is to be used as a guide only. All dimensions are estimates only and may not be exact measurements.