



SOLD

SOLD BY ROBYN HUNT REAL ESTATE

Featuring gorgeous timber highlights throughout this incredibly private 696m2 property with beautiful leafy outlook makes you feel like you're a world away from the everyday - yet you're right in the heart of Goonellabah!

Spread over two levels, each with their own access, this unique home could easily cater for extended family or those needing a separate work space or room for older children. Expansive covered decks on each level ensures everyone has access to a brilliant space for relaxing and taking in the surrounding nature.

Upper Level:

- * 3 Bedrooms - 2 with built-in wardrobes, main with air-conditioning
- * 3 Way bathroom - with bath
- * Open plan lounge/kitchen/dining area - with timber floors and dual timber doors to the deck
- * Full size laundry

Lower Level:

- * 4th Bedroom
- * Full size bathroom/laundry
- * Studio/Rumpus space - with dual timber doors to the deck
- * Storage area/study nook

Further features of the property include:

- * Double carport - with storage space under
- * Garden shed x 2
- * Terraced rear yard with delightful gully

If your heart's desire is a home nestled in nature and steeped in privacy, and your lifestyle requires you to be in a central and convenient in-town location, then this one will most definitely tick each of those boxes. A major shopping centre, local school, library and indoor aquatic and sports centre are all within walking distance.

To secure yourself a home that is unique in design and feel, and offers dual living options, you need look no further. Contact Exclusive Selling Agent, Robyn Hunt, on 0448 448 758 today to

4 BED | 2 BATH | 2 CAR

PRICE:
\$670,000

OPEN FOR INSPECTION:
N/A

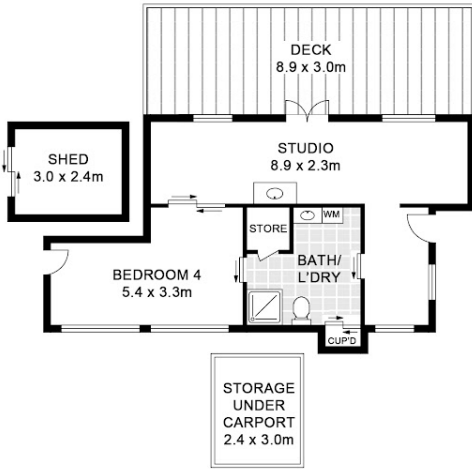


Robyn Hunt
0448448758
robyn@atrealty.com.au
www.atrealty.com.au

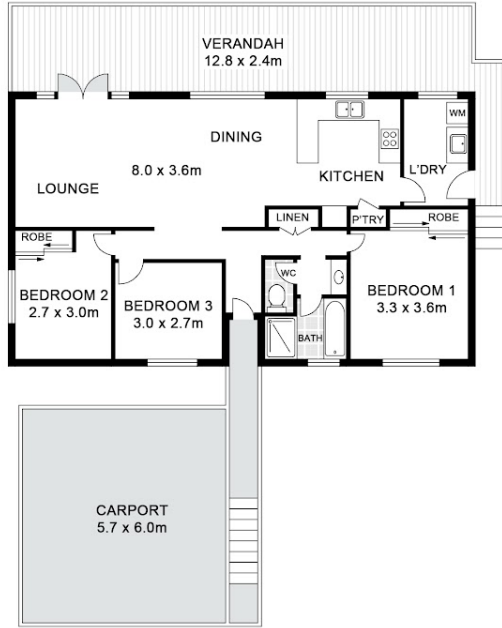
5 Hillcrest Avenue, Goonellabah



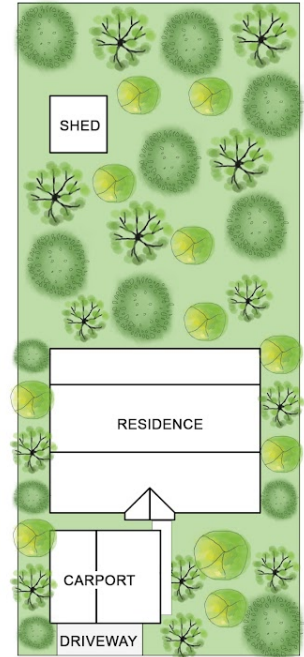
APPROXIMATE
AREAS
INTERNAL: 145m²
EXTERNAL: 104m²



LOWER LEVEL



UPPER LEVEL



SITE PLAN
(NOT TO SCALE)

Disclaimer: Please note this floor plan is for marketing purposes and is to be used as a guide only. All dimensions are estimates only and may not be exact measurements.