



**SOLD**

## MODERN, COASTAL LIVING AT ITS BEST!

This impressive two-storey modern home is situated on a generous 533sqm corner block, opposite a peaceful, bushland setting.

Enter this beautifully presented home through the tiled Foyer which leads to the newly carpeted light-filled Living Room, an open-plan Kitchen with gas cooktop and dishwasher and the Family/Dining room - featuring a new floating floor.

Enjoy your morning coffee on the private front porch or indulge in a lazy afternoon on the alfresco covered Patio. Low maintenance yards, a separate Laundry, Powder Room and internal access to the Double Garage complete the ground floor features.

Upstairs you'll find the spacious Master Bedroom with ensuite and walk-in robe, three additional Bedrooms of generous size, all with built-in wardrobes and a central Bathroom. The fourth Bedroom can also be set up as a comfortable Home Office.

### Property Features:

- Quality construction, solid brick and tile, double storey home
- Peaceful and private location opposite bushland reserve
- Front porch overlooking newly planted native garden
- Freshly painted throughout, new carpet and flooring in living areas
- Reverse cycle air-conditioning
- Gas cooktop and dishwasher
- Built-in wardrobes, main with ensuite & walk-in robe
- Fully fenced level backyard featuring prepared vegetable/garden bed
- Undercover outdoor rear patio
- Separate laundry and powder room
- Double garage with remote entry and internal access
- Additional off street parking
- Room for a boat or caravan
- Highly sought after location

This fabulous modern home is ready and waiting for a new family to move in, relax and enjoy everything a coastal lifestyle has to offer, with convenient access to the best local schools, shops, cafes, restaurants, parks, beautiful lakes and pristine beaches.

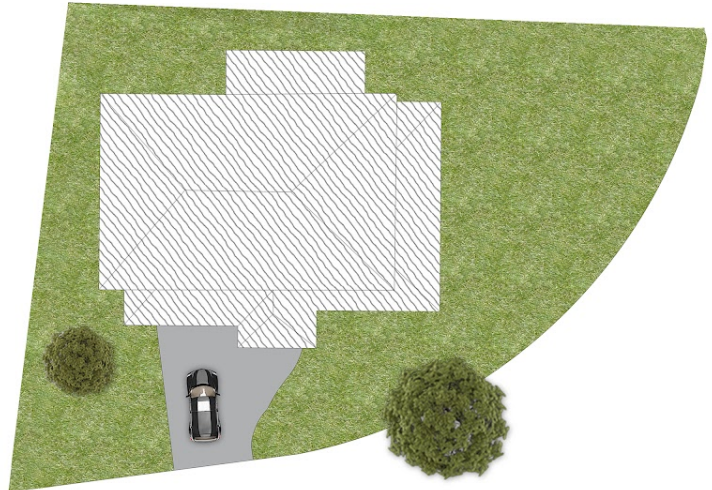
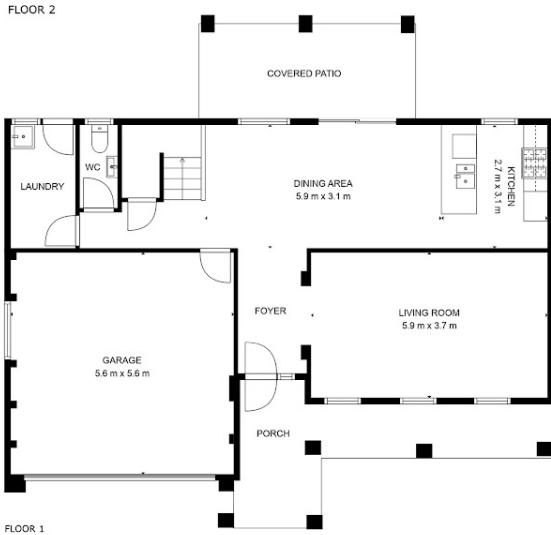
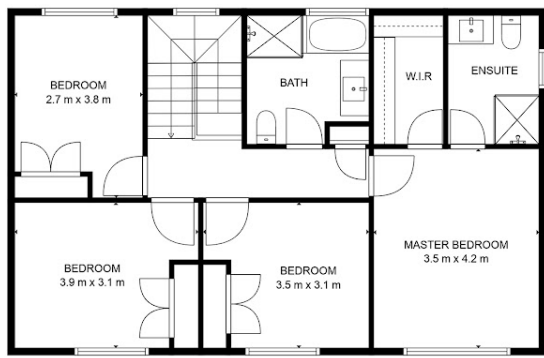
**4 BED | 2 BATH | 2 CAR**

**PRICE:**  
\$840

**OPEN FOR INSPECTION:**  
N/A



**Brad Barker**  
**0413875833**  
bradbarker@atrealty.com.au  
[www.atrealty.com.au](http://www.atrealty.com.au)



### 3 Peony Place, HAMLYN TERRACE



Internal Area 178m<sup>2</sup>  
 External Area 28m<sup>2</sup>  
 Total Area 533m<sup>2</sup>



PLEASE NOTE: These Floorplan + Site Plans have been generated for marketing purposes and are to be used as a guide only. While all care is taken, no guarantee can be given in respect of accuracy; sizes and dimensions are approximate, actual may vary.

Disclaimer: Please note this floor plan is for marketing purposes and is to be used as a guide only. All dimensions are estimates only and may not be exact measurements.