



**SOLD**

## FAMILY LIVING AT IT'S FINEST!

This beautiful and highly upgraded family home is ready to welcome its new owner. Displaying multiple high end finishes throughout and built with the finest quality, this Thornhill Park residence creates the perfect space for a lucky family to enjoy. Situated in on a 752m<sup>2</sup> (approx.) block this outstanding property is within close proximity to freeway access and all future developments that the popular and fast growing estate of Thornhill Park has to offer.

Upon entering this beautiful property you will be immediately impressed upon entering through the front door. This amazing floorplan is perfect to accommodate a growing family with multiple living areas and generously sized bedrooms. The four bedrooms all contain built in robes, while the master bedroom is grand in size with double walk in robes and a large ensuite with double vanity, double shower and stone benchtops.

The formal living zones provides the perfect space for the family to enjoy. This flows through to large open plan living and dining space which is overlooked by the kitchen of your dreams! Showcasing huge island bench with stone benchtops, upgraded hardware, double sink, pendant lighting, double ovens, dishwasher and ample bench space.

Moving outside to the backyard there is an extended alfresco area and a low maintenance backyard ready for you to make your own.

Extra features of this property include: alarm system, ducted heating, evaporative cooling, high ceilings, large laundry with ample storage, quality windows furnishings, shower niches, downlights and much more.

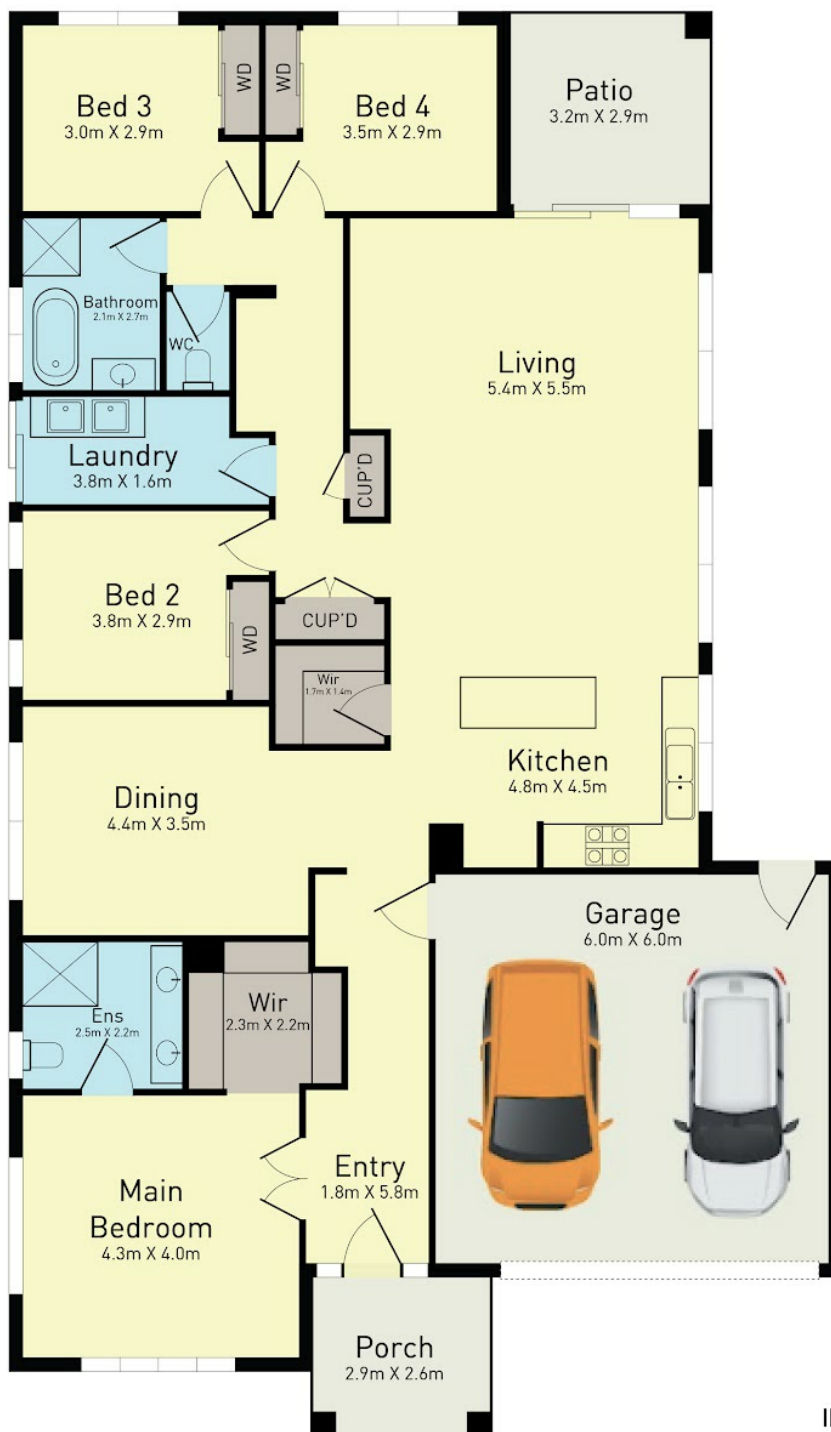
**4 BED | 2 BATH | 2 CAR**

**PRICE:**  
**\$820,000**

**OPEN FOR INSPECTION:**  
**N/A**



**Joseph Hanna**  
**0423966320**  
joseph@atrealty.com.au  
[www.atrealty.com.au](http://www.atrealty.com.au)



INTERNAL AREA 212 SQ.M  
EXTERNAL AREA 16 SQ.M

## 1 Maiden Place, Thronhill Park

\* Dimensions are approximate and for illustrative purpose only

Disclaimer: Please note this floor plan is for marketing purposes and is to be used as a guide only. All dimensions are estimates only and may not be exact measurements.