



# SOLD

## SUPERIOR FAMILY LIVING ON A LARGE 2,054SQM BLOCK OF LAND

Welcome to 13 Oxenbridge Dr, Wilton, a superior family home that will exceed all of your expectations. Flawless in its design, it exudes excellence from entry to exit. Proudly sitting on its large 2,054sqm parcel of land, surrounded by lush greenery and offering a multitude of entertaining options, the expansive north facing, low maintenance yard is one your family will thrive in all year round. Splashing in the sparkling inground swimming pool won't just be for the warmer months, the pool's heater keeps the temperature just right during any season. Relaxing under the luxurious poolside cabana listening to the rain pitter patter on the roof will lull you into a sense of calmness while taking in the serenity around you. Family functionality is evident throughout, comforting interiors are inviting and the home's quality features can be adorned at every turn. The recent upgrades compliment the home's superb setting and is a must see for any astute buyer looking for their forever home.

### Features Include:

- Front porch overlooking the semi enclosed front yard
- Boasting four generously proportioned bedrooms with built in robes
- The master suite is located at the rear of the home & includes a dual walk in robe & a modern ensuite with dual basins, a double length shower with double shower heads & an inviting bathtub
- Home Office / Study
- Kids play room or teenagers retreat
- Completely separate Theater room
- Family room with built in cabinetry & a cozy built in fireplace
- A gleaming kitchen with sprawling surfaces & an array of storage options
- Walk in pantry
- Gas cooking
- Stainless steel appliances including a dishwasher & Smeg oven
- Feature pendant lighting
- Waterfall stone island bench
- Breakfast bar
- Dining room
- Bright & airy main bathroom equipped with a bathtub
- Separate toilet
- Spacious laundry with external access

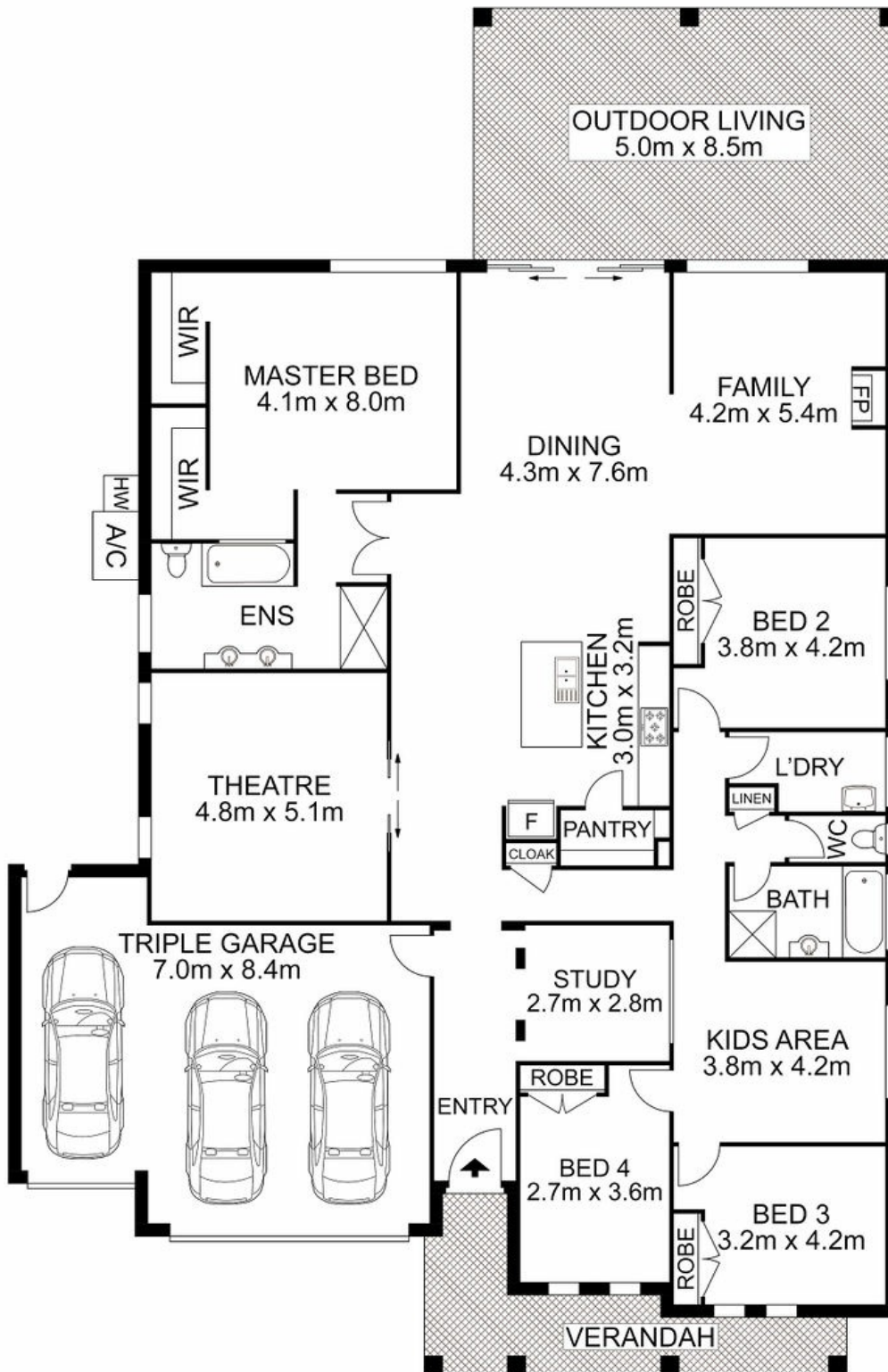
4 BED | 2 BATH | 3 CAR

PRICE:  
\$1,850,000

OPEN FOR INSPECTION:  
N/A



**Bobby Reynolds**  
0432173566  
bobby.reynolds@atrealty.com.au  
[agencycentralwilton.com.au](http://agencycentralwilton.com.au)



 AGENCY

Disclaimer: Please note this floor plan is for marketing purposes and is to be used as a guide only. All dimensions are estimates only and may not be exact measurements.

13 Oxenbridge Avenue, Wilton

**Bobby Reynolds** All measurements are approximate • Drawn for marketing purposes only

0432173566

bobby.reynolds@atrealty.com.au

agencycentralwilton.com.au

