

SOLD

COASTAL LIVING IN GOLDEN BAY

Experience a beach lifestyle in this stunning 3 bedroom 2 bathroom home located in beautiful Golden Bay. With the beach only minutes away, you can enjoy the sunshine and surf the waves.

Sitting on an elevated 351 sqm block across from Carlindie Park and boasting a huge 210 square meters of living space this property is ideal for investors, first home buyers or a growing family. Built in 2013 with space in mind this home is sure to impress. Perfect for a share home or to accommodate growing kids.

The interior of the home is a modern and stylish space. Features include, two living spaces, timber floating floor boards throughout, high ceilings, a dishwasher, broadband internet, and ducted heating and cooling systems.

The home has three queen size bedrooms, two stylish modern bathrooms. The master bedroom is large and spacious and has its own ensuite bathroom with double Deluge shower heads and a walk in robe.

The kitchen is a great place to cook and entertain, with a 900mm oven and 5 burner gas cooktop. There is plenty of counter space and storage including a generous walk in pantry, double fridge recess, and central island bench.

The outdoor area of the home is built for entertainment and is the perfect place to host friends and family. Enjoy the fully fenced paved backyard with secure parking, and a double remote garage for extra storage space and shoppers entry into the home.

This is a rare and exciting opportunity to own a spacious home in a great location. Don't miss out on this property – contact Liz Smith

Separate Formal lounge
Floating Timber plank floors.
Master suite with separate W/C
Double Deluge shower heads
Plantation shutters to front windows
Queen bedrooms with BIR's
Main bathroom with large tub + separate shower.

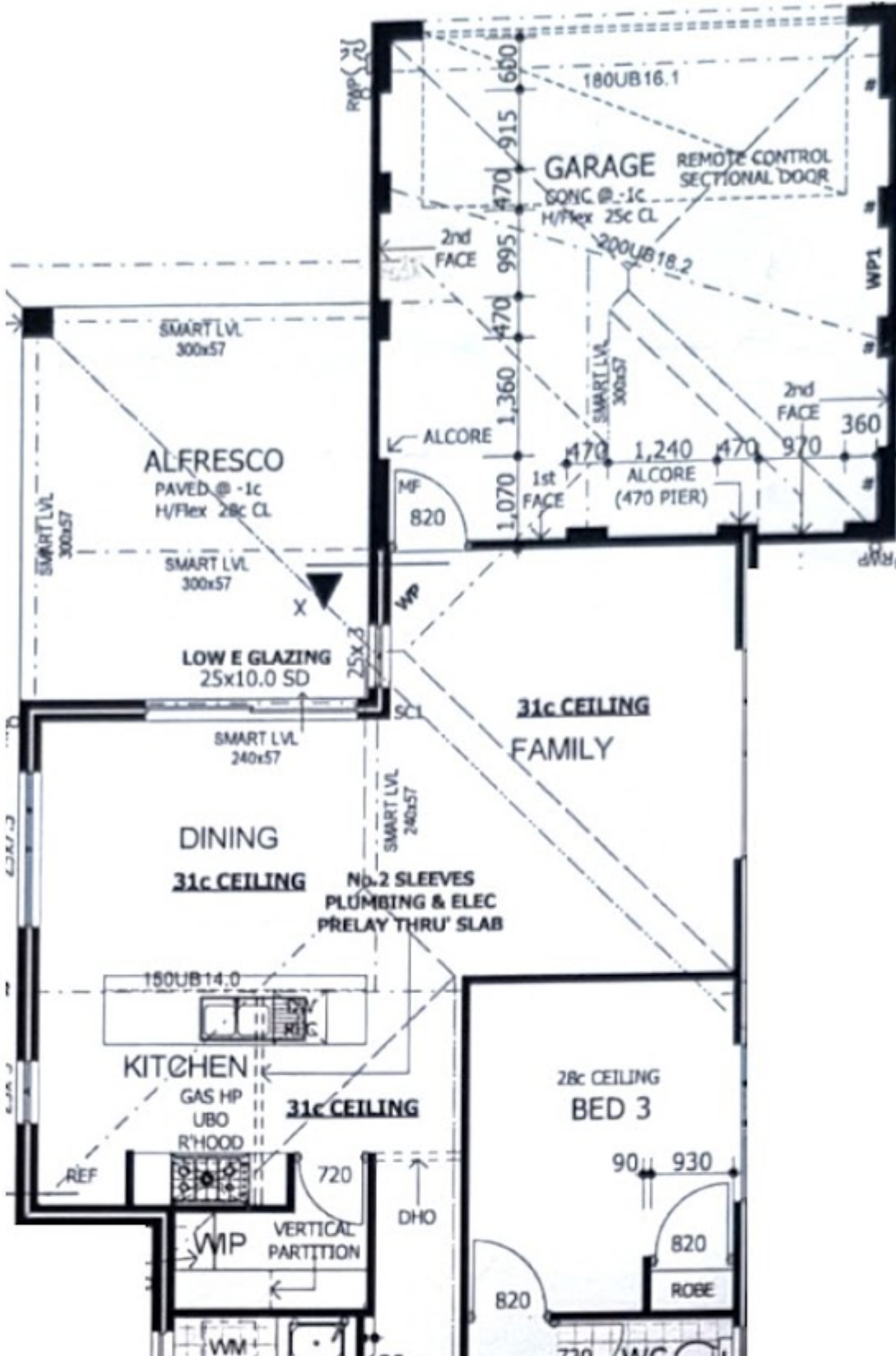
3 BED | 2 BATH | 2 CAR

PRICE:
\$510,000

OPEN FOR INSPECTION:
N/A



Liz Smith
0431926144
lizsmith@atrealty.com.au
www.atrealty.com.au



Disclaimer: Please note this floor plan is for marketing purposes and is to be used as a guide only. All dimensions are estimates only and may not be exact measurements.

Liz Smith
 0431926144
 lizsmith@atrealty.com.au
 www.atrealty.com.au

