

4 LIEFTING COURT, DENILIQVIN, NSW, 2710



SOLD

STUNNING NEW HOME, JUST MOVE IN & ENJOY

Welcome to your new home in Deniliquin, - a vibrant community where you'll find the perfect balance of city convenience and country charm. This stunning five-bedroom house has been thoughtfully designed with modern comforts and luxurious features to create the ideal family home.

Enter the property and you're immediately welcomed by a spacious and inviting interior with high ceilings. There's multiple living areas that offer plenty of space for entertainment for the whole family, perfect for movie nights or a quiet evening in. The study offers a great space for those who need a quiet place to work from home or for the kids to do their homework.

The heart of the home is the beautiful kitchen, complete with a large black stone island bench & walk-in pantry. This overlooks the dining and living area, with sliding doors that open onto the outdoor entertainment area - perfect for alfresco dining and barbeques with friends and family. The courtyard is a tranquil oasis with a lovely outlook, an outside spa, and a fully fenced with new colour bond fencing.

The five bedrooms offer plenty of space and privacy, with built-in wardrobes, extra storage with double linen cupboard & ducted cooling and heating. The master bedroom is especially spacious, with a walk-in wardrobe and ensuite, while the main bathroom has been designed with a luxurious finishes with grey floor to ceiling tiles

This property is also eco-friendly, with solar panels, keeping your power bills down. For added convenience, the property also includes a double remote garage with panel lift door, so you can keep your cars safe and secure.

This Deniliquin property offers the perfect combination of luxury, comfort, and convenience in a stunning location. With its five bedrooms, two bathrooms, and two garages, you and your family will enjoy the ideal balance of city living and country charm. This property is a must-see. Contact us today to arrange an inspection.

5 BED | 2 BATH | 2 CAR

PRICE:
\$650,000

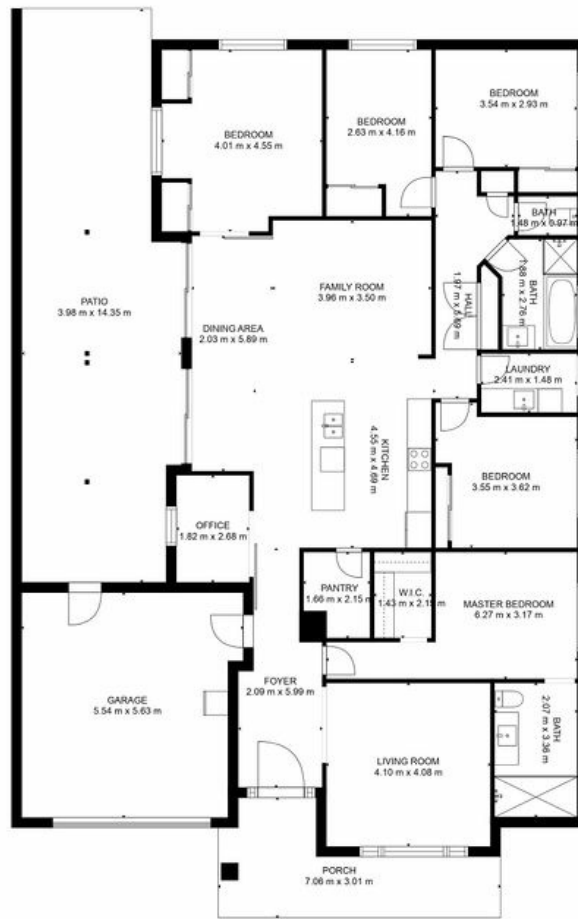
OPEN FOR INSPECTION:
N/A



Ashley Hall
0429173775

ashley@atrealty.com.au
www.ashrealestate.com.au

4 LIFTING COURT



NICOLE CONNELLY PHOTOGRAPHY
0458 122 661

GROSS INTERNAL AREA
FLOOR 1: 183 m², EXCLUDED AREAS:
GARAGE: 30 m², PATIO: 52 m²
PORCH: 14 m²
SIZES AND DIMENSIONS ARE APPROXIMATE, ACTUAL MAY VARY.

Disclaimer: Please note this floor plan is for marketing purposes and is to be used as a guide only. All dimensions are estimates only and may not be exact measurements.