



# SOLD

## ARCHITECTURAL DESIGNED UNIQUE FAMILY HOME

This exceptionally well presented home has absolutely nothing to do. The home itself is unique, but what really sets it apart is the outdoor entertaining area. A generous sized block, with lush tropical gardens. This home impresses with its renovated interior, where a neutral colour palette work together to create a wonderful sense of space.

### Featuring :

- Fully fenced and gated block creates private, tranquil space enhanced by a fully landscaped lush garden
- Fully renovated interior with a neutral colour palette throughout
- A front study/office space perfect if you want to work from home
- Living space consists of spacious living room and dining room, opening out to outdoor entertaining
- Tasteful kitchen feels open and spacious, featuring modern appliances and gas cooktop
- Huge architectural front carport and rear verandah/undercover space
- Large master bedroom features ensuite with large shower
- Two additional bedrooms, each with built-in robe and generous in size, all with split system A/C
- Family bathroom features bathroom with shower and separate WC
- Internal separate laundry room, and storeroom
- Handy garden shed around the side
- Expansive dual access undercover parking, plenty of space for a caravan or boat

Well located in the northern suburbs, this four bedroom residence creates an incredible family home, minutes from Marrara Sporting Complex and within easy reach of local shops, schools and parklands.

Surrounded expanse of tropical greenery, the home feels perfectly private within its gated and fully fenced block, providing plenty of indoor-outdoor space for all the family.

Step inside the home, you are instantly taken in by its spacious living area and flow-through dining room, where everything works together to create a fantastic sense of space.

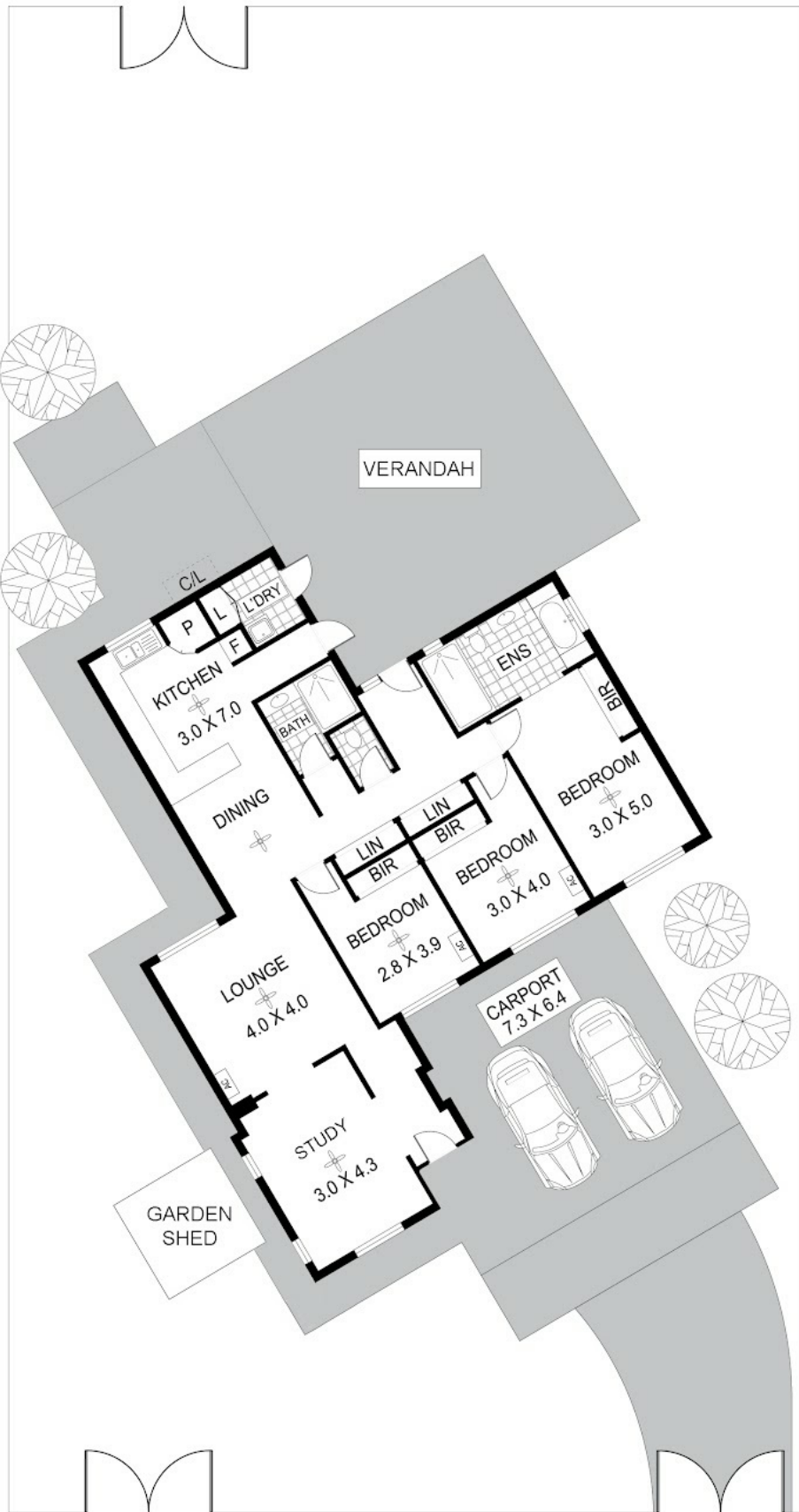
4 BED | 2 BATH | 2 CAR

PRICE:  
\$570,000

OPEN FOR INSPECTION:  
N/A



**Nicole Wheeler**  
0417508800  
nicolewheeler@atrealty.com.au  
[www.atrealty.com.au](http://www.atrealty.com.au)



Disclaimer: Please note this floor plan is for marketing purposes and is to be used as a guide only. All dimensions are estimates only and may not be exact measurements.

Scale in metres. Indicative only. Dimensions are approximate. All information contained herein is gathered from sources we believe to be reliable. However we cannot guarantee its accuracy and interested persons should rely on their own enquiries

14 Whetton Place Karama NT 0812

0417508800

nicolewheeler@atrealty.com.au

[www.atrealty.com.au](http://www.atrealty.com.au)

@realty