



SOLD

LOVELY LOWSET OFFERING LOW-MAINTENANCE & CONVENIENCE

This one owner 2011 home is No-To-Low maintenance with all the money spent already. This 4-bedroom, 2-bathroom house is sure to impress. Situated on a 568 sqm block it is fully fenced, hiding established gardens, fruit trees, and lawns for kids, this property is perfect for those simply enjoy a quiet and peaceful lifestyle.

It is newly painted with new carpets and no more to spend unless you so choose. It has security screens and electric security blinds plus a back to base monitored security system with internet camera monitoring. Stay warm and cool every season with the 6 air conditioners, supported by solar electricity and a solar hot water system. Watering is supported with a rainwater catchment system.

Situated close to almost every shopping centre needed just around the corner in Browns Plains, this home offers the lifestyle and convenience you need. It is walking distance to the 198-acre area of Berrinba Wetlands teeming with birdlife, walking & cycling trails & a visitor centre with picnic facilities. Alternatively walk just one km to Demelo Road Park and garden all serviced by public and friendly walking and bike tracks with parklands and playgrounds.

As you step inside, you are greeted by a spacious and light-filled large open plan living area that is the heart of the home. The dining room and kitchen overlook the back deck offering outdoor entertaining and a second alfresco outdoor kitchen. This multi-function dual kitchen home is perfect for the large family, for entertaining or for the busy professional family. The adjacent dining area has sliding doors which open to the outdoor undercover seating area.

The master bedroom features built in wardrobes plus ensuite and a sliding glass door to the alfresco outdoor area. The remaining three bedrooms all have built in robes, and security blinds and shutters and the family bathroom with a bathtub, shower, single bay vanity with ample storage and a separate toilet. There is also a separate laundry in the car port with a double automated garage with internal access to the home.

The garden offers a variety of fruit Trees which are: 4 different types of Mango trees plus, lemonade tree orange, lemon, pawpaw, custard apple, guava, drumstick tree, tamarind, soursop fruit, avocado tree and a passionfruit vine.

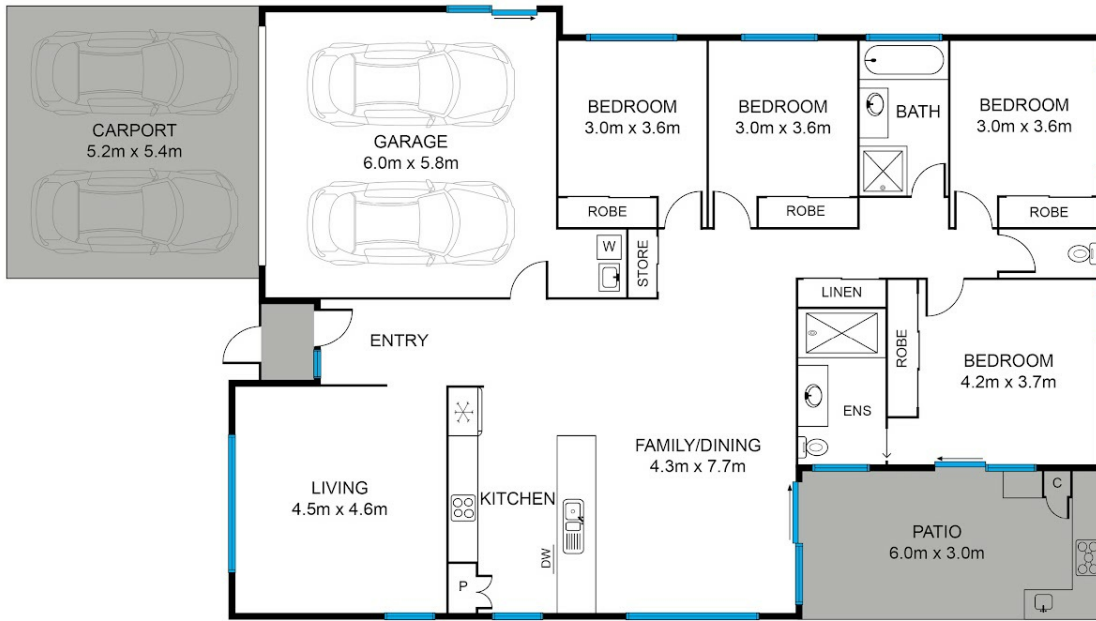
4 BED | 2 BATH | 6 CAR

PRICE:
\$710,000

OPEN FOR INSPECTION:
N/A



Bill Turner
0401844942
bill.turner@atrealty.com.au
www.atrealty.com.au



Whilst every attempt has been made to ensure the accuracy of the floor plan contained here, measurements of doors, windows and rooms are approximate and no responsibility is taken for any error, omission or mis-statement. These plans are for representation purposes only.

INTERNAL: 202m² | EXTERNAL: 46m² | TOTAL: 248m²

Disclaimer: Please note this floor plan is for marketing purposes and is to be used as a guide only. All dimensions are estimates only and may not be exact measurements.