



# FOR SALE

## A RESORT STYLE LIFESTYLE WITH WATER VIEWS

This beautiful home is positioned in a prime location in the seaside suburb of Coronet Bay. With a tranquil coast-meets-country setting, it overlooks Westernport Bay, taking in views across to French Island, Corinella, and Phillip Island. The glorious sunsets are a daily highlight, this property truly is a retreat.

This striking residence with soaring cathedral ceilings takes full advantage of its private position and panoramic bay and rural views and sits on an approximately 534m<sup>2</sup> allotment. Floor-to-ceiling doors and windows allow views of passing boats, kite-surfers, and the occasional dolphins; this home flawlessly connects to its surroundings.

Suitable for a large family, the property features five bedrooms, home office and multiple entertaining areas and spaces to relax while enjoying the stunning view. Upstairs is light and airy with a loungeroom, kitchenette, family bathroom, and new carpet throughout the living areas.

The main bedroom has access out to the rear verandah and manicured garden. The beautiful dressing room and ensuite with a coastal feel is a delightful place to get ready for the day.

Some features of this home:

Large open-plan living areas with breathtaking water views, even from the back verandah!

Multiple entertaining areas

Large kitchen with butler's pantry

34 solar panels with a large 10.5kw inverter

Split system air conditioners/heaters (3)

Coonara

Single garage

Shed in rear yard

From the modern coastal Facade to stepping inside this home, it will surely take your breathe away...

Coronet Bay is approximately fifteen minutes from Phillip Island, and forty-five minutes to Pakenham. Enjoy local attractions such as the Phillip Island Grand Prix Circuit, Phillip Island

5 BED | 2 BATH | 1 CAR

PRICE:

\$1,470,000

OPEN FOR INSPECTION:

N/A

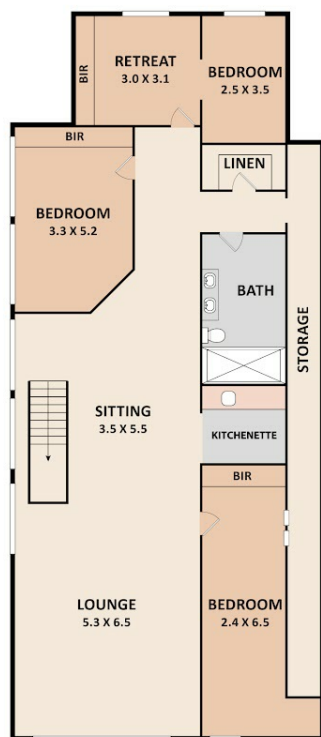


**Mel Ahearn**

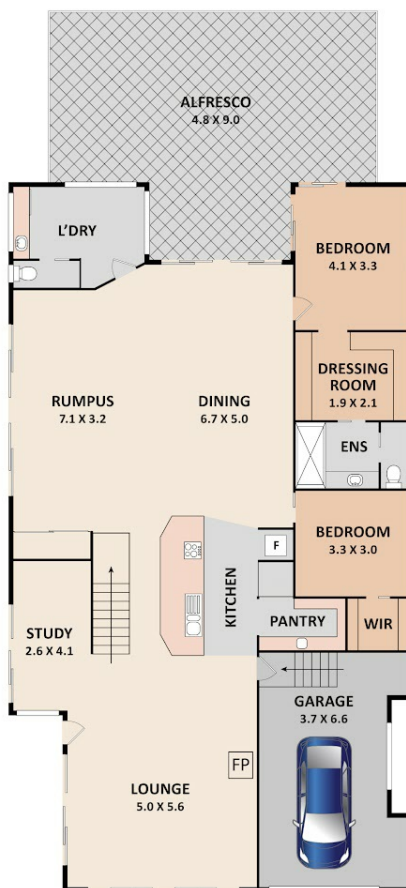
**0409183763**

mahearn@atrealty.com.au

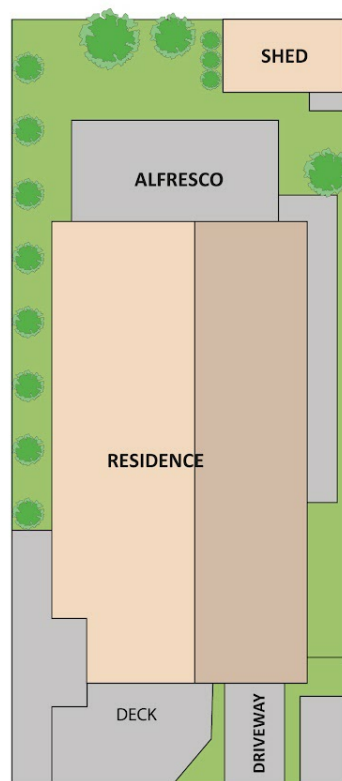
[atrealtypropertysalesgippsland.com.au](http://atrealtypropertysalesgippsland.com.au)



FIRST FLOOR



GROUND FLOOR



Whilst every attempt has been made to ensure the accuracy of the floorplans contained here, measurements of doors, windows and rooms are approximate and no responsibility is taken for any error, omission or misstatement. These plans are for representation purposes only.

## 12 CHAMP ELYSEES ESPLANADE, CORONET BAY

**COMPLETE**  
IMAGE  
ARCHITECTURAL + REAL ESTATE MEDIA



Disclaimer: Please note this floor plan is for marketing purposes and is to be used as a guide only. All dimensions are estimates only and may not be exact measurements.