



**SOLD**

## LOW STRATA LEVY

This stunning two bedroom, two bathroom apartment situated in the heart of Auburn. The modern design of this apartment is both inviting and comforting, with its open plan living, built in wardrobes, floorboards and intercom, this is the perfect place to call it your home.

The central location of this apartment is ideal for those who enjoy the convenience of being close to all amenities. With a variety of local cafes, restaurants, shops and parks all in close proximity, you don't have to travel far to get the things you need.

This apartment is perfect for those who are looking for a new start, or for investors looking for a great return. All you need to do is move in and make it your own.

- Only approx. 700m from Auburn Station and Shops
- Double brick modern apartment with quality finishes
- Spacious 2 bedroom with built-in wardrobes, timber flooring
- Combined living and dining area with air conditioning
- Modern kitchen with gas cooking & stone benchtop
- 2 modern bathroom include en-suite
- Low strata levy: approx. \$466 p/q
- Currently leased with \$540 per week. Market rent is approx. \$650 per week.
- Large balcony
- Total area size: approx. 119sqm
- Basement security parking space
- Security complex with video intercom

### Disclaimer

The information contained on this advertisement is believed to be reliable and while every effort has been made to ensure that the information is accurate, Whitestone Agency Pty Ltd disclaim any implied warranty or representation about its accuracy, completeness or appropriateness for any particular purpose.

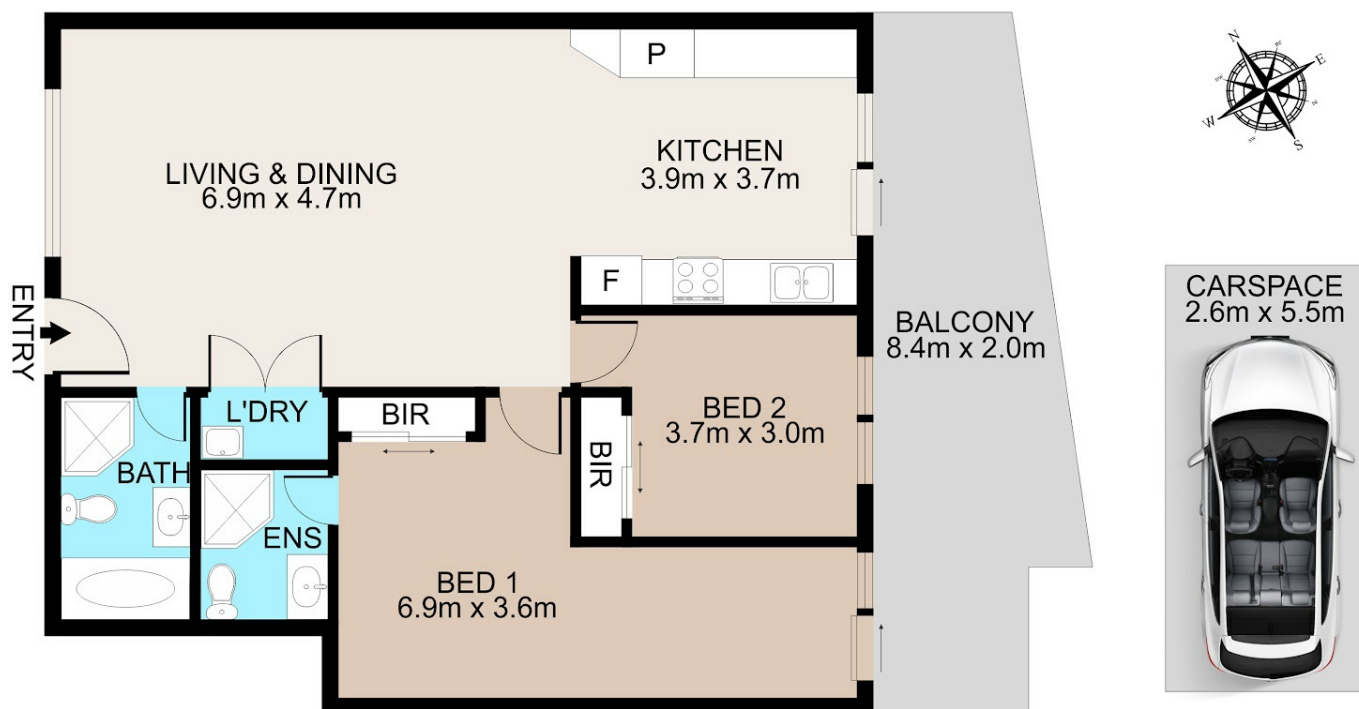
**2 BED | 2 BATH | 1 CAR**

**PRICE:**  
**\$495,000**

**OPEN FOR INSPECTION:**  
**N/A**



**Dinh Ung**  
**0413817600**  
dinh@atrealty.com.au  
[www.atrealty.com.au](http://www.atrealty.com.au)



## 26/48-52 St Hilliers Rd, Auburn

Scale in metres. Indicative only. Dimensions are approximate. All information contained herein is gathered from sources we believe to be reliable. However we cannot guarantee its accuracy and interested persons should rely on their own enquiries

Disclaimer: Please note this floor plan is for marketing purposes and is to be used as a guide only. All dimensions are estimates only and may not be exact measurements.