



SOLD

VICTORIA TOWERS OVER 50'S - BUY INTO THE RETIREMENT LIFESTYLE YOU DESERVE

CALL JACKIE TAYLOR-FOX TO PRIVATELY INSPECT 1800 280 893

Beautifully Presented 2 Bedroom in the MOST POPULAR OVER 50'S on the GOLD COAST. Victoria Towers is an over 50's Freehold Strata Title Luxury Apartment residential building and is completely Freehold with NO exit fees.

These stylish apartments have an abundance of shopping nearby and just a short walk to all Supermarkets, Cinemas, Bowls Club, Tennis, Theatre, Doctors, RSL and the light rail and bus stop is right on the doorstep which makes travelling to the Hospital, Pacific Fair and Helensvale a breeze.

At Victoria Towers you can relax, enjoy the resort style facilities including:

- 25 Meter Lap pool - Heated all year
- Hot Spa, Sauna and Steam room
- Full Calendar of Organised Events
- Library/Residents Lounge with Cinema TV
- Professionally equipped GYM
- Open-Air Bowling Green and BBQ and Dining Terrace
- On-site Security and Intercom access
- Visitors parking available
- 5-star aged care facilities with separate entrance

Friends and family will love to visit and enjoy the laid-back Gold Coast Lifestyle. Buy into Victoria Towers and enjoy the community friendly activities and live your retirement in the way you deserve. CONTACT JACKIE TO PRIVATELY INSPECT ON 1800 280 893

Disclaimer: The website may have filtered the property into a price bracket for website functionality purposes. We have in preparing this information used our best endeavours to ensure that the information contained herein is true and accurate, but accept no responsibility and disclaim all liability in respect of any errors, omissions, inaccuracies or misstatements that may occur. Prospective purchasers should make their own enquiries to verify the information contained herein.

2 BED | 2 BATH | 1 CAR

PRICE:
\$745,000

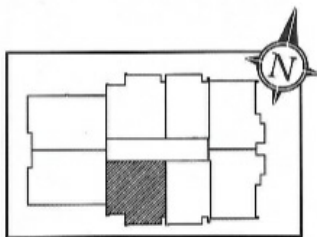
OPEN FOR INSPECTION:
N/A



Jackie Taylor-Fox
0411236823
jackietaylorfox@atrealty.com.au
www.atrealty.com.au

FLOORPLAN - TYPE C-S

UNIT 604



Disclaimer: Please note this floor plan is for marketing purposes and is to be used as a guide only. All dimensions are estimates only and may not be exact measurements.

Internal Area 92m²

Jackie Taylor-Fox 20m²

0411236823 Total 112m²

jackietaylorfox@atrealty.com.au

www.atrealty.com.au

@realty

