




FOR SALE

5 POWELL PLACE, BENTLEY PARK

4  | 2  | 4 



REVOLUTION
REAL ESTATE
CAIRNS



UNDER CONTRACT WITH CHRIS EUSTACE

PRICE: Mid to High \$600,000's

Welcome to your dream home in the sought-after location of Bentley Park, QLD. You'll love the look, feel and ambience of this home, surrounded by a tranquil landscape and set on a 701m2 allotment.

The outdoor features are plentiful and built for entertaining. From the secluded and private balcony, to the spacious BBQ area for outdoor entertaining, you won't run out of places to explore and for all your storage needs, there is secure parking for cars, boats and a lockable workshop.

The interior of the home provides a generous living space with three bedrooms, one bathroom and one ensuite, plus office/bedroom downstairs. Built-in wardrobes, air-conditioning and absolutely stunning polished floorboards giving a homely feel, while the solar panels provide the eco-friendly touch.

Don't miss out on this incredible opportunity. This house is the perfect blend of modernity and eco-friendly living, so get in touch with us at Revolution Real Estate Cairns today to make your move!

OPEN FOR INSPECTION:
N/A


Chris Eustace // 0412 852 369

chris@revolutionrealestatecairns.com.au // revolutionrealestatecairns.com.au



FOR SALE

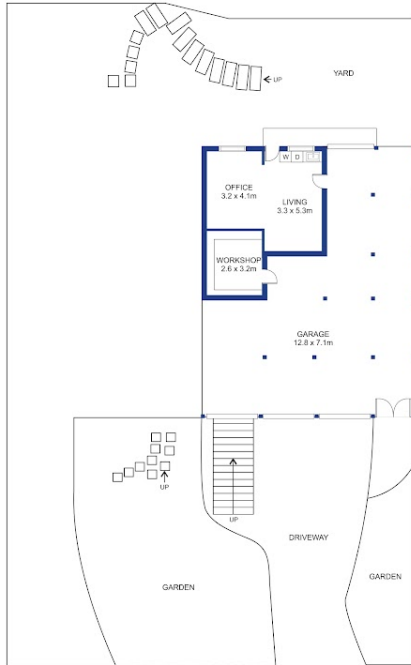
5 POWELL PLACE, BENTLEY PARK

4  | 2  | 4 

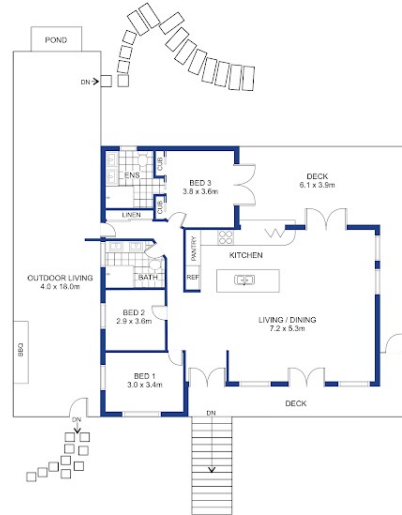


REVOLUTION
REAL ESTATE
CAIRNS

5 POWELL PLACE, BENTLEY PARK



LOWER LEVEL



UPPER LEVEL



REVOLUTION
REAL ESTATE
CAIRNS

Renderings and floor plans are intended only as a general reference. Feature, materials, finishes, layout and actual measurement of unit may be different than shown.

Chris Eustace // 0412 852 369

chris@revolutionrealestatecairns.com.au // revolutionrealestatecairns.com.au



