

FOR SALE

SOLD BY EARLY BIRD REAL ESTATE STUNNING FULLY RENOVATED HOME IN QUIET CUL-DE-SAC

This is a unique opportunity to own a wonderful family home in a desirable location. With its generous land size, ample parking, and comfortable living spaces, this house won't be on the market for long. Don't hesitate – contact us today to arrange an inspection

This property offers three well sized bedrooms, easy maintainable gardens and is conveniently located to local schools, shopping centres, M4 & M7 motorways and local parks.

Hitting all the right notes with its attention to detail, the immaculate floor plan showcases a vibrant open-plan living continuing to impress every step of the way through with stylish, light-filled internal spaces

Features Include:

- + Potential for a granny flat or duplex development (subject to council approval)
- + Recently renovated with fresh, modern decor, this home is move-in ready
- + Brand new kitchen with an electric cooktop and plenty of storage space
- + Split system air conditioning unit in the main bedroom
- + Brand new bathroom featuring a combined shower/bathtub and toilet
- + White wash colour solid timber flooring throughout
- + Living area with split system air conditioning
- + Gas heating outlet in the lounge room
- + Spacious internal Laundry
- + Single garage + workshop, plus additional room for 5 extra undercover car spaces
- + Aluminium 8m2 shed in backyard
- + Land size 613sqm approx
- + Rent potential \$450 per week

*Agent Interest

3 BED | 1 BATH | 5 CAR

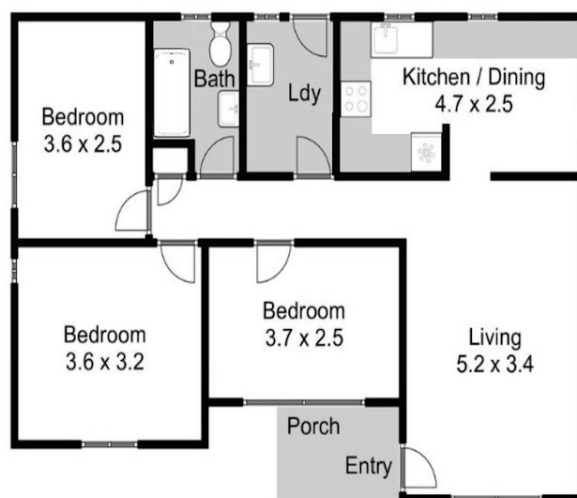
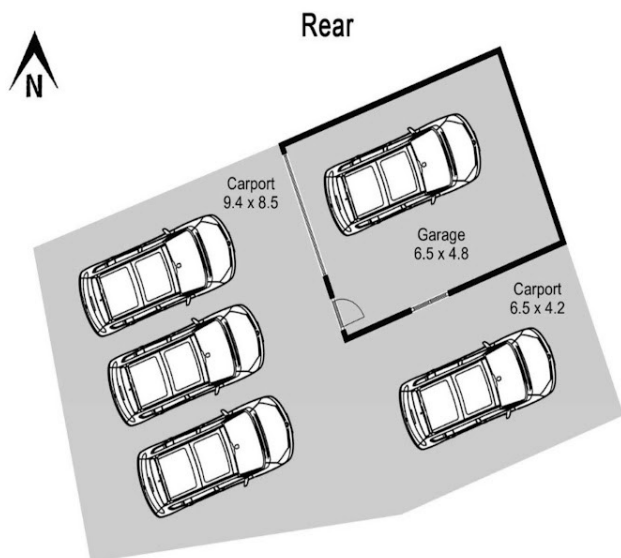
PRICE:
\$690,000

OPEN FOR INSPECTION:
N/A



Caroline Luo
0426888838

carolineluo@earlybirdrealestate.com.au
hillsestategroup.com.au



Floorplan measurements are a guide only.
All dimensions are approximate in their distance and volume.

Caroline Luo 0426 888 838
carolineluo@earlybirdrealestate.com.au
www.earlybirdrealestate.com.au

Disclaimer: Please note this floor plan is for marketing purposes and is to be used as a guide only. All dimensions are estimates only and may not be exact measurements.