



SOLD

GREAT LOCATION FOR THE LARGER FAMILY OR THE SAVVY INVESTOR!!

This four-bedroom two-bathroom home with a self-contained one-bedroom teenage retreat is ideal for the large family or that investor that wants to add to their portfolio. This property is tucked away with privacy plus. Situated in Thorntons Somerset Park area surrounded by beautiful homes. Close to Village shopping Centre, childcare, sports oval, train station 10mins to the Green Hills Shopping Centre and 30mins to Newcastle. The teenage retreat is a self-contained one bedroom, kitchen, bathroom, and your very own courtyard.

So, if you have been searching for an affordable family home in a fantastic location or an investor, make sure this is on the top of your list.

Other features include -

- Separate theatre room.
 - Tiled dining and family room with outside access to the alfresco area.
 - Modern styled, open plan kitchen with dishwasher, gas cooktop, electric oven, fridge recess, and pantry.
 - Formal dining area.
 - Split system Air-con in main bedroom and the open plan living area.
 - Main bedroom with ceiling fan and ensuite providing built in robes, shower, WC, and vanity.
 - Second bedroom with built in robes, and ceiling fan.
 - Third bedroom with built in robes and ceiling fan.
 - Fourth bedroom with built in robes.
 - Family bathroom has a shower, bath, and vanity.
 - Separate WC. - Large laundry with sink.
 - Alfresco area with large, pitched patio overlooking the delightful reserve.
 - Large double garage with entry to home.
 - Separate fully self-contained teenage retreat with air-con and lots of storage space.
- 1,162sqm block.

DISCLAIMER: The information detailed above is provided by our vendors and as a result, Michael Simmons @realty makes no representations as to its accuracy. Interested parties are encouraged to conduct their own due diligence in relation to every property they consider purchasing. All photographs, maps and images are representative and for marketing purposes only.

5 BED | 3 BATH | 4 CAR

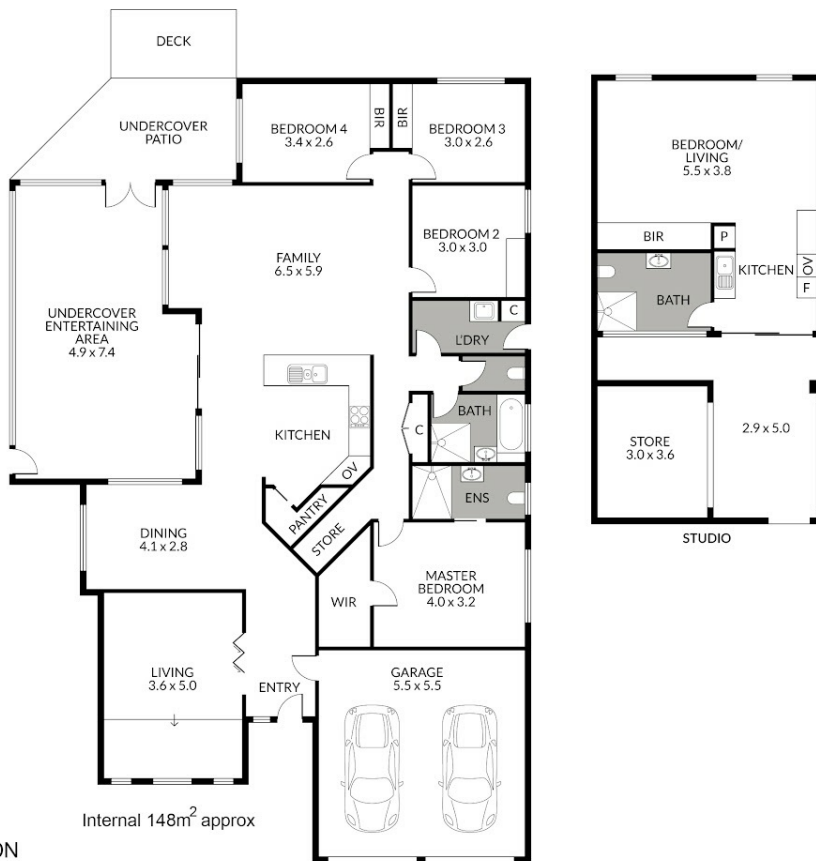
PRICE:
\$790,000

OPEN FOR INSPECTION:
N/A



Michael Simmons
0429326718

micksimmons@atrealty.com.au
www.atrealty.com.au



8 LAUREL CL THORNTON

Scale in metres. Dimensions are approximate. All information contained herein is gathered from sources we believe to be reliable, however we cannot guarantee its accuracy and interested persons should rely on their own enquiries.

Disclaimer: Please note this floor plan is for marketing purposes and is to be used as a guide only. All dimensions are estimates only and may not be exact measurements.