

**SOLD**

## HAMPTONS STYLE - TURN KEY READY

Welcome home, with 3 bedrooms PLUS study and second lounge room that could easily serve as a guest chamber, sprawling indoor and outdoor living AND an over sized shed on a huge block - this home will be perfect for you!

The home features high end finishes throughout, professionally renovated, so you can rest assured this will be a sound purchase. Some of the stand out features are the beautiful bright kitchen with quality appliances, the sprawling outdoor living area, multiple living areas that can double as rumpus space/teenager's retreat/guest chambers and the large shed WITH rear yard car access.

### Property features:

- Private from the street with established landscaping
- Ample living spaces, open plan lounge and dining area PLUS completely separate lounge room which opens onto the study area.
- Over sized, fully covered entertaining deck. Overlook the large yard and enjoy in entertaining in all seasons
- 5KW solar power and 2 panel solar hot water system
- 3 good sized bedrooms, plus optional 4th bedroom/guest room/media room, main with A/C, new ceiling fans in 3 bedrooms. All with built-in robes
- Separate study room
- Fully renovated kitchen with stylish subway tiling, plantation shutters, a corner drawer that is amazing, ample bench space and storage and high end appliances. Westinghouse dishwasher and ample bench and storage space
- Luxurious, modern main bathroom plus second toilet
- Linen cupboards providing plenty of storage
- Freshly painted throughout
- Laundry located next to lower level deck with bonus second toilet and extra storage
- Large 6x6m fully powered shed with roller door, even more additional storage underneath the house
- Security system with 4 cameras installed and doorbell.
- Meter box fully upgraded
- New fencing and privacy screens.

**3 BED | 1 BATH | 3 CAR**

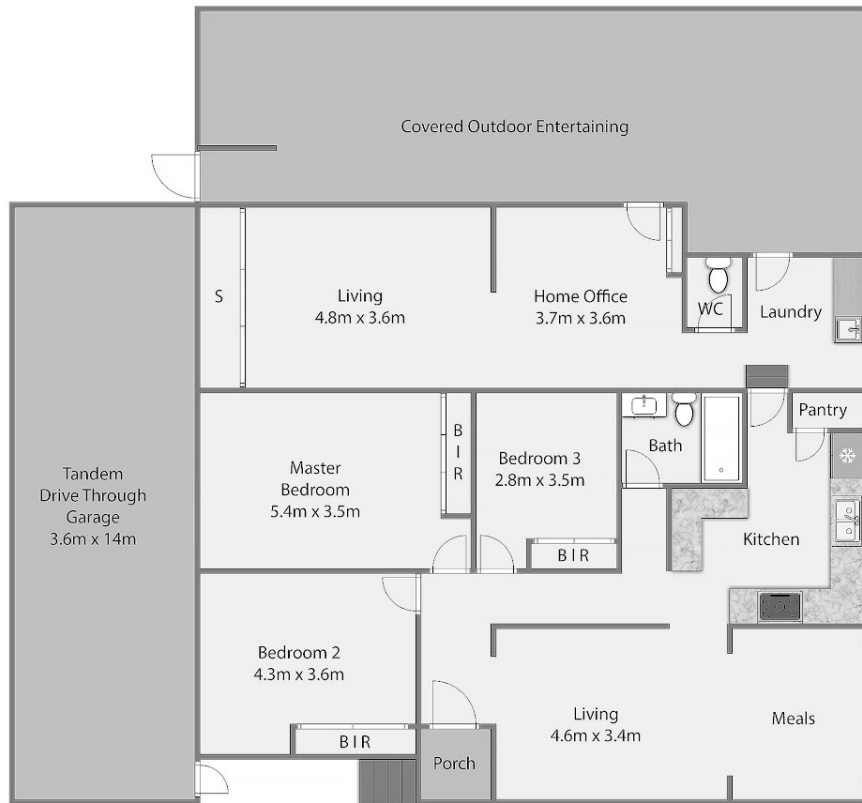
**PRICE:**  
**\$590,000**

**OPEN FOR INSPECTION:**  
**N/A**



**Matt Ireland**  
**0404546822**  
matt@irelandandco.au  
Ireland&Co

# 6 Trumpy Street, Silkstone



This plan is a simple schematic representation of the property.  
Whilst every care is taken, it should only be considered as an artist impression.

Disclaimer: Please note this floor plan is for marketing purposes and is to be used as a guide only. All dimensions are estimates only and may not be exact measurements.