



SOLD

PRETTY PERFECT ON PANDOREA

If Location and Privacy are at the top of your priority list, then you'll love this McCarthy built home complete with bush setting and the sounds of nature that exude from it.

As soon as you enter this magnificent home, you will be welcomed by visions of the beautiful outdoor alfresco area. Turning right you will pass the garage, office and laundry before entering the large open plan living, dining and kitchen area that seamlessly flows out to the covered alfresco area. And, that's not all.

With only one neighbor, backing onto North Lakes Environmental Reserve and on a quiet no-through road you can be assured of an incredibly harmonious existence.

Designed to accommodate a large family, this unique and practical floor plan with more than ample sized living rooms, comes complete with four over-sized bedrooms plus a study, luxurious kitchen, cathedral ceilings, ducted air-conditioning, 3 step cornice, side access and an alfresco area overlooking the back yard and abundant bush land. The clever layout and extra large windows ensures the whole dwelling is always filled with beautiful natural light. This beautiful home also has the benefit of being able to store your boat or caravan in the back yard with street access down the left hand side of the house.

Features include -

- Master bedroom includes a walk-in robe, ceiling fan, a extensive ensuite with double shower and twin vanity
- 3 additional over-sized bedrooms, all with built-ins and ceiling fans
- Ducted air-conditioning throughout
- Separate study
- Modern kitchen with gas cooking, modern stainless steel appliances, dishwasher and ample preparation/storage space
- Huge open plan living, dining & kitchen area
- Main bathroom with double sized shower and separate bathtub
- Additional family room
- Separate laundry with external access
- Large private undercover alfresco area
- Secure double lock up garage with internal access
- Easy boat or caravan storage in the back yard

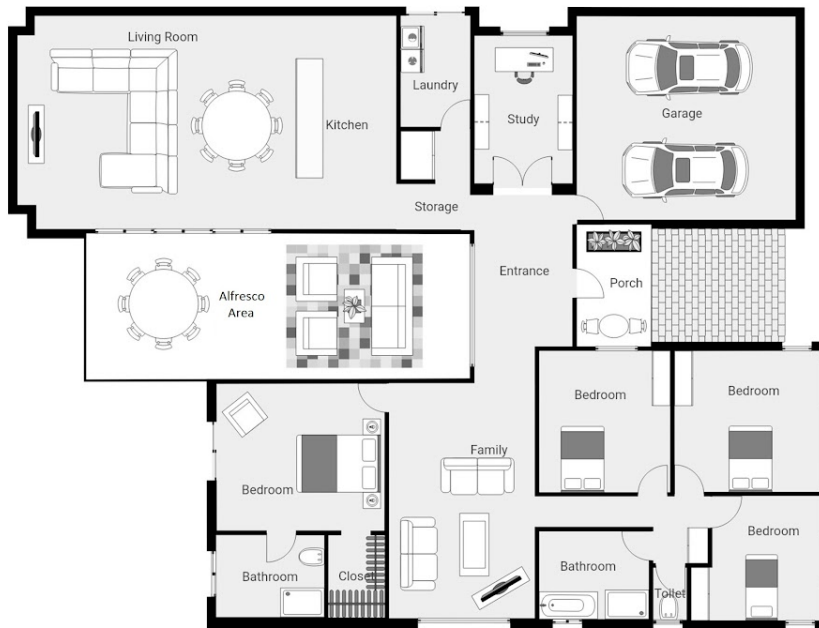
4 BED | 2 BATH | 2 CAR

PRICE:
\$985,000

OPEN FOR INSPECTION:
N/A



Adrian Matthews
0403171644
adrianmatthews@atrealty.com.au
www.atrealty.com.au



*indicative only. Size and dimensions are approximate. All information contained here in is gathered from sources we believe to be reliable.

*Artist Impression, Indicative only. Size and dimensions are approximate; they are subject to errors and inaccuracies and no liability will be accepted.
 All information contained herein is gathered from sources we believe to be reliable.
 Plans are shown for marketing purposes only and interested persons should rely on their own enquiries.
 Internal approx* 204m.sq
 External approx* 46m.sq
 Garage / storage* 34m.sq
 Total approx* 284m.sq



Disclaimer: Please note this floor plan is for marketing purposes and is to be used as a guide only. All dimensions are estimates only and may not be exact measurements.

Adrian Matthews
 0403171644
 adrianmatthews@atrealty.com.au
 www.atrealty.com.au

