

SOLD

"WELCOME TO DROUIN! 2 BEDROOM UNIT WITH 1 BATHROOM & CARPARK

Great location, walk to V-Line train, schools, cafes and main town centre.

With two bedrooms, one bathroom and a single carpark, this property provides all the necessary amenities for a first home buyer or investor.

The property is currently tenanted on a month to month lease, so it is well-maintained. The annual rent per year is \$14,040. Perfect for the investor, due to the demands for rentals in Drouin or ready to move in.

Step inside and you will be happy with the easy flow design. The unit is complete with a split system heating and airconditioning, so you can be sure of a comfortable temperature all year round. The open-plan living and dining area creates a warm and inviting atmosphere.

The kitchen has plenty of cabinetry for storage. The two bedrooms are generous in size, and serviced by the central bathroom and laundry.

Outside the home, you can enjoy the low-maintenance courtyard and access via the gate to the convenience of a single-carport, so you can be sure of sheltered parking for your vehicle.

This property offers a great opportunity to live in a beautiful, tranquil environment without sacrificing the convenience of a modern lifestyle. This unit is sure to be snapped up quickly.

2 BED | 1 BATH | 1 CAR

PRICE:
\$360,000

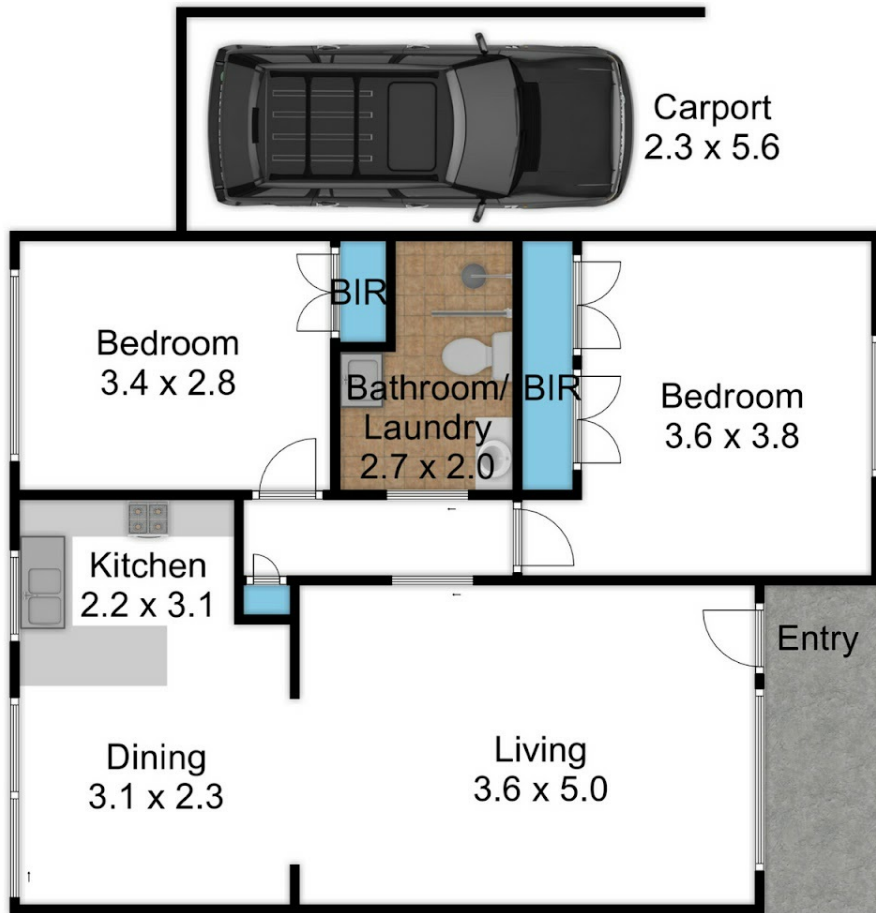
OPEN FOR INSPECTION:
N/A



Mel Ahearn
0409183763

mahearn@atrealty.com.au

atrealtypropertysalesgippsland.com.au



2/7 Lindman Street - Drouin



Disclaimer: Please note this floor plan is for marketing purposes and is to be used as a guide only. All dimensions are estimates only and may not be exact measurements.