

SOLD

THE HAMPTONS CLASSIC BEAUTY

*****SOLD!! ...SOLD!!... SOLD!!... IN 1 HOME OPEN AGAIN BY NANCY BIRD IF YOU WOULD LIKE AN APPRAISAL ON YOUR BIGGEST ASSET BY PERTHS 5 STAR AGENT CALL 041 555 8594*****

Nancy Bird is Proud to Present this Hamptons Classic Beauty, this immaculate "display home like" beautifully presented 5 Bedroom plus Study, 3 Bathroom Two Storey Home, quality built by Ventura Homes, will impress even the fussiest of Buyers as soon as you enter, with the stunning floor plan design of approximately over 315 sqm of Building, all situated on a BIG 634 sqm block, perfectly located opposite pretty green parklands, on a whisper quiet street that is also a bonus no through road ! Be quick to grab this rare opportunity for your forever family dream home, this one is a sure winner for your list of must have's for all the family to enjoy!

Tailored for the dynamic family, this park front two storey 5 BIG bedroom home plus Study, blends a vibrant style with exceptional practicality, delivering an array of light-filled multiple living areas, huge outdoor entertaining area with a high pitched patio roof, large shed plus a big back yard with a lawn area or even room for a pool !

A beautiful heritage-styled façade, framed by hedge-lined reticulated easy care gardens, peers over the playground and pretty reserve beyond, whilst fronting an exceptional life style crafted for the growing family. A formal lounge/ Study with French doors precedes an expansive Open Plan Living Area which includes family, dining, and kitchen area, with a spacious theatre room at the rear primed for gold-class nights in with the family.

The kitchen is a gourmet delight with crisp white quality endless 30mm stone benchtops with breakfast bar and modern brand new appliances, a new stove top, rangehood and double sink with quality tap ware with features including large pantry, plenty of cupboard space and shoppers entry, with a large window overlooking the spacious delightful outdoor area and a spacious yard ready for relaxation and entertaining.

Accommodation covers both levels of this stylish home, which includes two King sized Master Bedrooms one on each level, with ensuite Bathroom and custom fitted walk in robes, accompanied by an additional three queen sized spacious bedrooms with large built in robes on

5 BED | 3 BATH | 2 CAR

PRICE:
\$980,000

OPEN FOR INSPECTION:
N/A



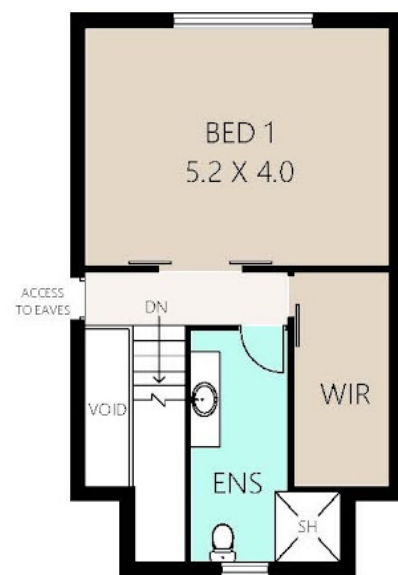
Nancy Bird
0415558594

nancybird@atrealty.com.au

www.atrealty.com.au



GROUND



UPPER

AREAS	
GROUND	
HOUSE	- 213.27m ²
GARAGE	- 37.94m ²
VERANDAH	- 16.14m ²
UPPER	
HOUSE	- 47.89m ²
TOTAL	- 315.24m²

8 Paradise Grove, Atwell



PLAN IS APPROXIMATE AND REPRESENTATIONAL ONLY

TATEFLOORPLANS.COM.AU

Disclaimer: Please note this floor plan is for marketing purposes and is to be used as a guide only. All dimensions are estimates only and may not be exact measurements.