

**SOLD**

## MACARTHUR HEIGHTS – 4 BEDROOM HOME WITH 1 BEDROOM GRANNY FLAT

3 & 3A DOYLE STREET, CAMPBELLTOWN

Positioned in one of Macarthur's exclusive Estates of Macarthur Heights is the opportunity to secure this one-year-old, four-bedroom custom tastefully designed home with an attached one - bedroom granny flat in a desirable family friendly location. This home which encompasses comfort, style and practicality, vibrant interiors accompanied with quality features can be adorned at every turn.

Perfect for the savvy investor with a combined potential rent of \$1,250 - \$1,300pw or those looking for a property that can accommodate extended family members, the expansive floor plan will impress any astute buyer looking for an idyllic family lifestyle within walking distance to all amenities.

House includes:

- Main Home with Luxury features found throughout
- Four bedrooms with built-ins
- Master bedroom with walk in robe & ensuite
- Open planned living & dining
- Separate lounge room
- Gorgeous kitchen with 40mm stone bench tops, 900mm appliances, dishwasher, soft closing cupboards and 900mm appliances
- Main bathroom with freestanding bath, and separate semi frameless Shower
- 2.75m Ceiling height
- Ducted air conditioning
- Video intercom
- LED down lights to living areas
- Alarm
- Undercover entertaining area
- Low maintenance backyard
- Double Remote-Control Garage

Granny Flat includes

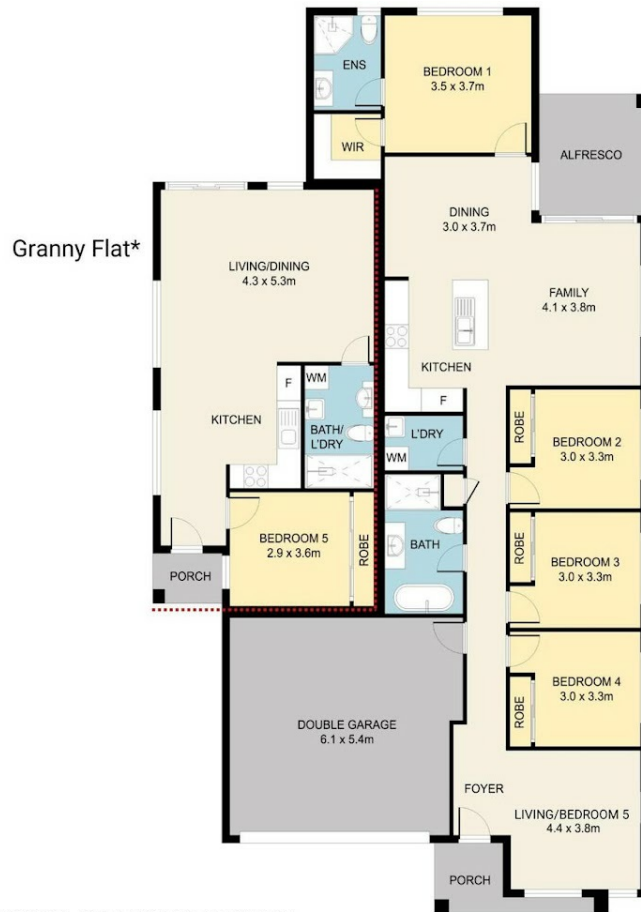
5 BED | 3 BATH | 2 CAR

PRICE:  
\$1,265,000

OPEN FOR INSPECTION:  
N/A



**Tameem Nazari**  
**0422415837**  
tameem@atrealty.com.au  
Nazari Property Group



### 3 DOYLE STREET, CAMPBELLTOWN

Disclaimer : Dimensions are approximate and should only be used as a guide.  
 All information contained herein is gathered from sources we believe to be reliable.  
 However, we cannot guarantee its accuracy and interested parties should rely on their own enquiries.



Disclaimer: Please note this floor plan is for marketing purposes and is to be used as a guide only. All dimensions are estimates only and may not be exact measurements.