



SOLD

SOLD BY ROBYN HUNT REAL ESTATE

Welcome to this truly exceptional property located in the heart of Goonellabah on the highly sought after northern ridgeline.

This stunning home sits on a 754m2 block and offers a huge range of versatility and desirable features both inside and out. Prepare to be wowed by the expansive double storey layout - making it almost seem like two homes in one!

The upper level features include;

- * Spacious and air-conditioned living zone, dining room and kitchen - all flowing out to the wide balcony and taking in the views of the pool and the breathtaking mountain ranges beyond
- * Master bedroom with dual built-in wardrobes, stunning ensuite bathroom with floor to ceiling tiles, and ceiling fan
- * Second and third bedrooms - both generously proportioned with built-in wardrobes and ceiling fans, and one with gorgeous mountain views
- * Main bathroom with floor to ceiling tiles and decadently deep free-standing bath
- * Covered all-weather outdoor entertaining area forming part of the wrap-around balcony

The lower level features include;

- * Air-conditioned large living/rumpus room with dining space
- * Huge, covered outdoor entertaining area with pool access
- * Full-sized kitchenette
- * Two bedrooms with built in wardrobes
- * Entry foyer
- * Utility room
- * Drive-through garage with remote control door, laundry and workshop/storage area

Outside, you will find plenty of space for the whole family to enjoy. In addition to the outdoor entertainment area, and swimming pool with an above ground surround, there is a garden shed and plenty of room for veggie beds and kids/pets to play.

Cleverly designed this property also offers a range of eco-friendly features, including 3kW of solar panels and the added bonus of solar hot water.

With a major shopping centre and sports complex just minutes away, and coastal beaches an

5 BED | 3 BATH | 2 CAR

PRICE:
\$899,000

OPEN FOR INSPECTION:
N/A



Robyn Hunt
0448448758
robyn@atrealty.com.au
www.atrealty.com.au

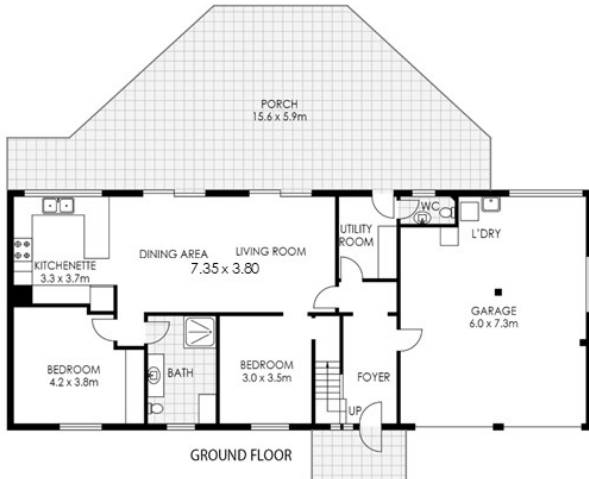
27 Hillcrest Ave, Goonellabah



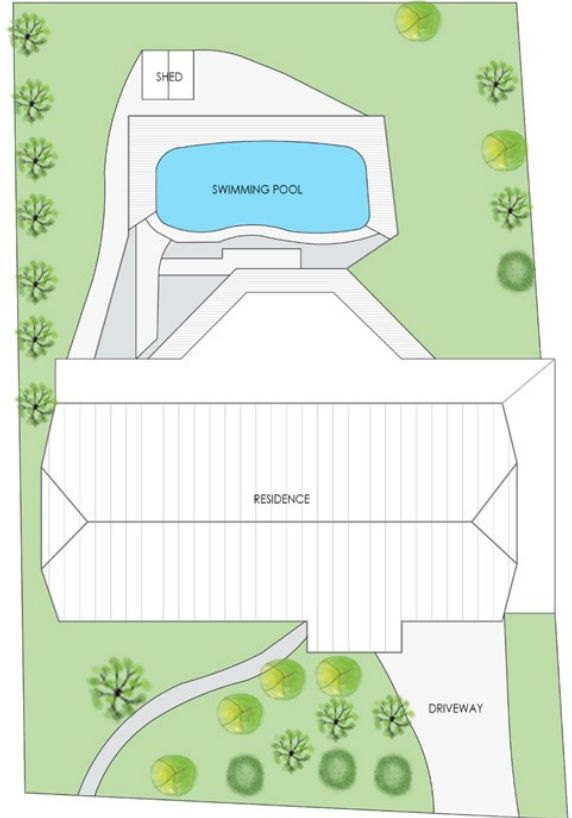
APPROXIMATE AREAS
INTERNAL: 253m²
EXTERNAL: 222m²



FIRST FLOOR



GROUND FLOOR



SITE PLAN NOT TO SCALE

Disclaimer: Please note this floor plan is for marketing purposes and is to be used as a guide only. All dimensions are estimates only and may not be exact measurements.