

SOLD

FANTASTIC INVESTMENT - 2 BEDROOM APARTMENT WITH CITY VIEWS !

Great Investment opportunity currently leased at @\$550 per week with long term tenants.

Located within the well facilitated Central Village complex in Oxford Towers on the 5th level, this light-filled and well presented two bedroom apartment. A generous open-plan living and dining with split-system air-conditioning. Floor to ceiling windows that can be partially opened up to maximise airflow. Galley-style kitchen equipped with stainless-steel appliances, stone bench tops, a tiled splashback and ample cupboard storage.

Two generous sized bedrooms with air conditioning in both bedrooms, ceiling fans, separated and serviced by the main bathroom.

Secure parking for one car and intercom security. Residents have the use of its sky terrace, barbecue amenities, man-made beach, lagoon, lap pool, gym and pool room.

Building Facilities

- Rooftop BBQ area with stunning city views
- Highly Sought Lifestyle Location
- Resort-Style Swimming Pool
- Gymnasium
- Billiard Room/Lounge
- Visitor Car Parking
- Onsite Management

- Body Corporate Fees: Approx. \$4,300 pa
- Council Rates: \$440 / Quarter
- Currently rented for \$550pw unfurnished until 31/08/2023 to a long term tenant

On the edge of Fortitude Valley, this vibrant 'Central Village' complex places you in the heart of Brisbane's lifestyle district. You are located on the door-step to the evolving suburb that is forever adding new eateries, entertainment and leisure facilities like the brand new King Street retail sector which is home to some of Brisbane's finest restaurants and bar's.

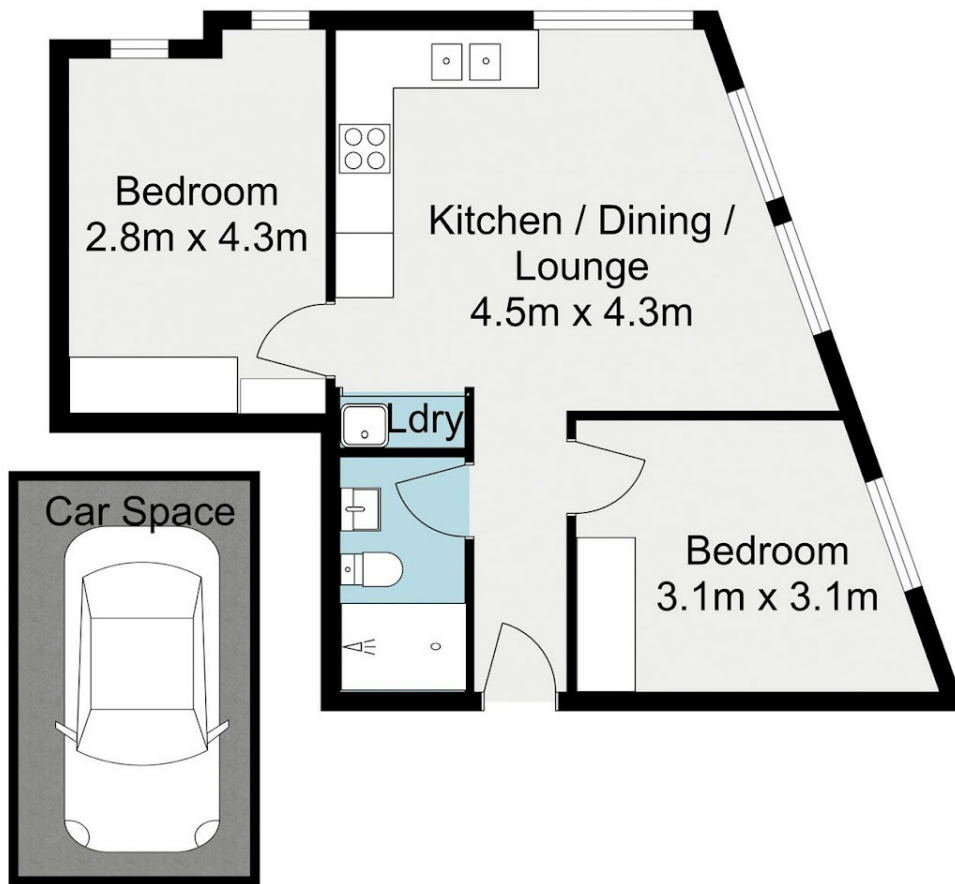
2 BED | 1 BATH | 1 CAR

PRICE:
\$420,000

OPEN FOR INSPECTION:
N/A



Karen Moke
0406521370
karenmoke@atrealty.com.au
www.atrealty.com.au



501 338 Water St, Fortitude Valley

This plan is for illustrative purposes. Measurements are approximate. No responsibility is taken for errors, omission or miss-statement.

Disclaimer: Please note this floor plan is for marketing purposes and is to be used as a guide only. All dimensions are estimates only and may not be exact measurements.