



SOLD

SPACIOUS 4 BEDROOM FAMILY HOME SET ON A GENEROUS ALLOTMENT WITH BAY VIEWS IN BAYVIEW

Welcome to this beautiful family home in highly sought-after Lauderdale. Only a 2 minute stroll to the beach, this four-bedroom, two-bathroom house is the perfect option for those seeking a tranquil and comfortable lifestyle less than 20 minutes from Hobart CBD.

The home is situated on a generous 866 square metre allotment, with a floor area of 188 square metres.

The large front balcony welcomes you into the home, with entry into the cosy casual dining room and tastefully renovated kitchen.

Beside the kitchen is a separate dining room, conveniently adjacent to the sunny lounge room. Down the hall are the two upper level bedrooms, Master with robe and ensuite and both offering expansive 180 degree bay views from the north east to west

The family bathroom and laundry are also on this level with stairs leading down to a walkthrough rumpus, 2 additional roomy bedrooms and study, second rumpus or potential 5th bedroom with external access and access to the under-home storage.

Inside, the house is filled with charm and character, a freestanding woodheater in the main living area ensures a warm and cosy atmosphere, while reverse cycle aircon ensures you can keep your home at the perfect temperature all year round.

The four bedrooms all feature ample space and north facing with natural light, perfect for taking in the Bay views of the surrounding area.

The front Balcony area provides the perfect spot for entertaining family and friends whilst overlooking Roches Beach and Frederick Henry Bay whilst keeping an eye on the kids utilising the huge front yard.

This home is a unique opportunity for anyone looking to move to the Lauderdale area with Shops, Beaches and Schools all close-by to enjoy the casual lifestyle only Lauderdale can offer.

- Generous 866m2 allotment
- Sunny and expansive Northerly views
- 4 Bedrooms, 2 Bathrooms
- 2nd and 3rd rumpus rooms
- fully fenced yard

4 BED | 2 BATH | 0 CAR

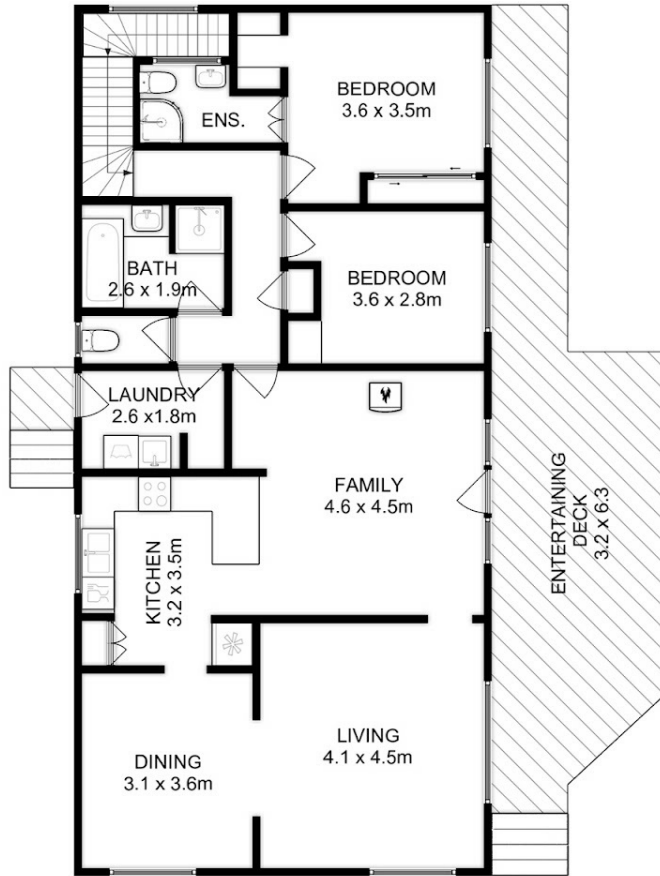
PRICE:
\$812,290

OPEN FOR INSPECTION:
N/A

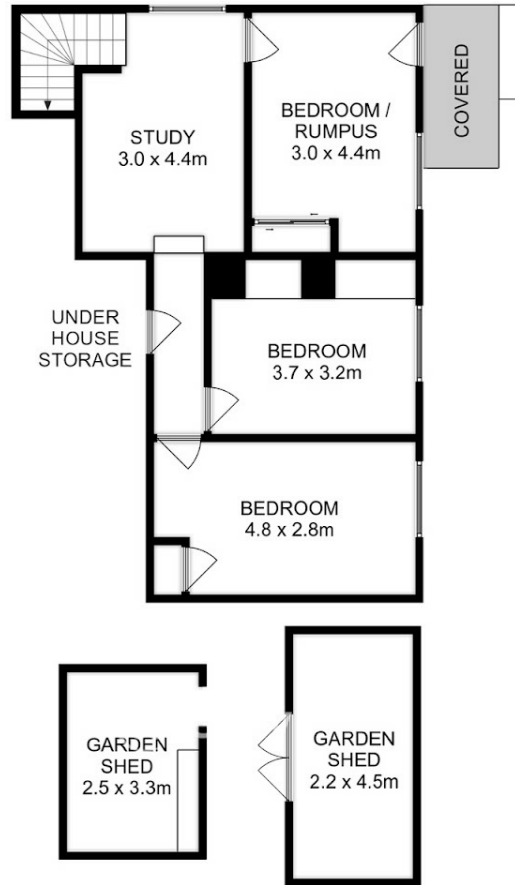


Ben Palmer
0417556731
benpalmer@atrealty.com.au
hobarthomes.com.au

UPPER LEVEL



LOWER LEVEL



Total Approx. Floor Area : 188 sqm
Total Approx. Courtyard Area : 18 sqm

All measurements are internal and approximate.
This plan is a sketch for illustration, not valuation.
Produced by Open2view.com



Disclaimer: Please note this floor plan is for marketing purposes and is to be used as a guide only. All dimensions are estimates only and may not be exact measurements.