



**SOLD**

## HIDDEN GEM

**WHEN BIGGER IS BEST** 198m<sup>2</sup> living 497m<sup>2</sup> land built 2008  
This hidden beauty is an opportunity not to be missed. Boasting four bedrooms and two bathrooms, this home is perfect for a young family or those who love to entertain.

Upon entering through the double entry or garage entry you will be struck by the size of the home. With the formal entry offering space for a study area and the formal lounge with split system air conditioner and gas point for your choice of heating and cooling. Following through to the large master bedroom with walk in robe and a huge ensuite featuring floor to ceiling tiles, large 4 cupboard + 3 drawer vanity and glass screened shower.

Enter the family area, you'll be greeted by an open-plan living area, with a generous sized kitchen. The kitchen comes complete with a dishwasher, range and plenty of storage with overhead cupboards, walk in pantry, 5 burner gas cooktop and electric oven – perfect for any budding chef. Surrounding the kitchen is the open plan dining and family with breakfast bar, plenty of windows and access to the outdoor entertaining area, perfect for hosting barbeques or just relaxing on a Sunday afternoon.

Moving through the house, you'll find the three minor bedrooms, each with its own built-in robe. There is the main bathroom with floor to ceiling tiles, glass screen shower, separate spa tub and generous vanity.  
The second W/C is located in the laundry which also has a walk in linen, vanity sink and abundant cupboard storage. Access to the washing line is direct from the laundry.

Greenfields is a suburb of opportunity. Just moments away from quality schools, shopping and dining precincts, and public transport – you'll never be short of something to do.

This house represents a true opportunity to make this house your very own. With a land size of 497 square meters, and a floor area of 198 square meters – the potential is practically limitless.

### EXTRA FEATURES

- 4 X split system Air Conditioning units
- High ceilings throughout
- Extra high garage with auto door to accommodate the 4 x 4
- Separate entry from the garage direct to the house.
- Timber look floors throughout the entire home.

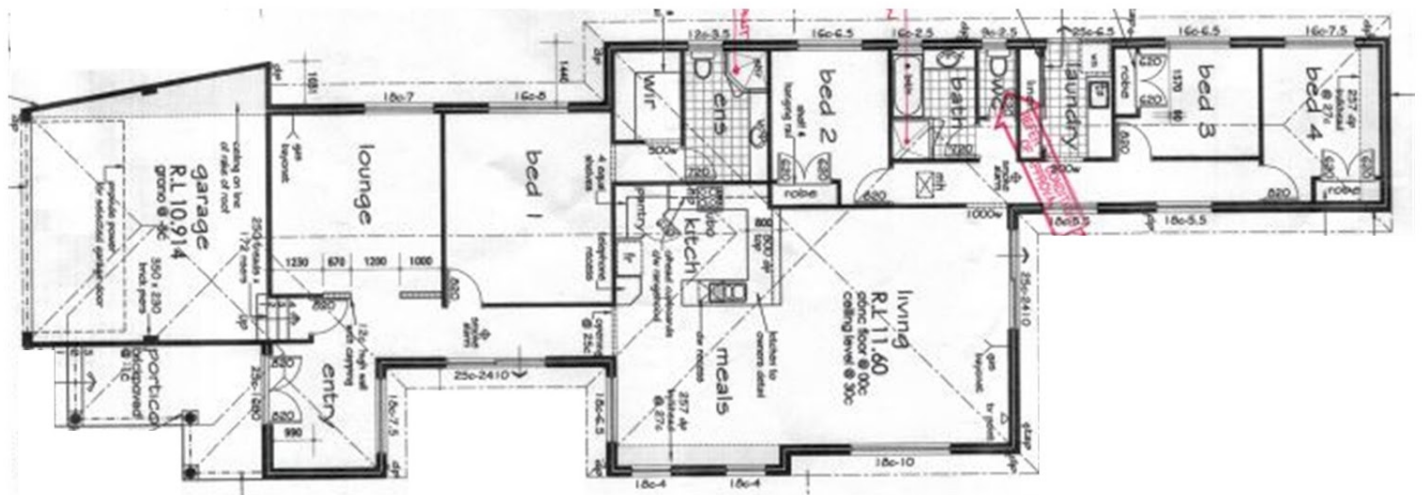
**4 BED | 2 BATH | 2 CAR**

**PRICE:**  
\$460,000

**OPEN FOR INSPECTION:**  
N/A



**Liz Smith**  
**0431926144**  
lizsmith@atrealty.com.au  
[www.atrealty.com.au](http://www.atrealty.com.au)



Disclaimer: Please note this floor plan is for marketing purposes and is to be used as a guide only. All dimensions are estimates only and may not be exact measurements.