

~~~~~ RIVER VIEWS ~~~~~

Oversized Car space  
6.8 x 2.8

Living 5.5 x 5.5  
Dining 3.4 x 3.0  
Kitchen 4.0 x 2.5

POINTS OF INTEREST

1. NELSON PLACE
2. Surfers Paradise Restaurants, Bars & Shops
3. Broadbeach Restaurants, Bars & Shops
4. Pacific Fair Shopping Centre
5. Star Casino
6. Gold Coast Convention Centre
7. Capri Via Roma
8. HOTA, Home Of Arts
9. Glink Light Rail Stations
10. Broadbeach to Surfers Oceanway

CHEVRON ISLAND  
ISLE OF CAPRI  
SURFERS PARADISE  
BROADBEACH WATERS  
BROADBEACH

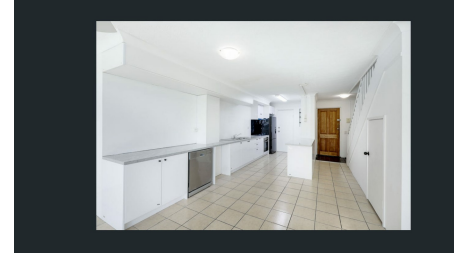
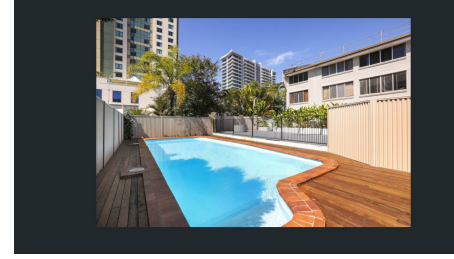
Master Bedroom 5.5 x 3.9  
Bedroom 3.8 x 3.0

Bath & L'dry  
Ens

7/34 Remembrance Drive SURFERS PARADISE      2 Bed      1 Bath + Ensuite      1 Car

Total Internal Area 125m<sup>2</sup>  
Carspace 19m<sup>2</sup>

This is not a legal document therefore all measurements and information provided is subject to survey. No permission is given to use or alter this Floor Plan without the consent of Pure Design Concepts. The overall presentation style, layout, imagery, fonts, background, colours and terminology has been originally created by PDC and is subject to strict copyright. No ownership is taken of building design. Find out more at [puredesignconcepts.com.au](http://puredesignconcepts.com.au)



# FOR LEASE

## EXPERIENCE PARADISE : 2BR+ENSUITE+POOL APARTMENT IN SURFERS!

Located in 'Nelson Place' on the waterfront in Surfers Paradise, we present this fully renovated two-bedroom double storey apartment, currently vacant and ready for new tenants. This residence offers a bright and spacious open plan layout, presenting an unmissable opportunity. The apartment features a generous living and dining area, complemented by a large kitchen with ample storage and bench space. Natural light fills the space, providing picturesque waterfront views. Upstairs, you will find a well-proportioned master bedroom and a second bedroom, both featuring a powder room and ensuite.

You can take advantage of the large swimming pool and enjoy the beautiful water views. This is an excellent chance to secure a centrally located apartment just steps away from the renowned Gold Coast beaches, the vibrant entertainment precinct, and a variety of restaurants and cafes in Chevron Island, Surfers Paradise, Isle of Capri, and major shopping centres.

**Key Features:**

- Spacious kitchen with open plan living and dining area
- Recently renovated two-story loft-style unit with bedrooms on the upper level
- Open plan living, dining, and large kitchen on the lower level
- Private and secure garage space
- Conveniently located near Surfers Paradise beaches, entertainment areas, and amenities

To Apply, click below:

<https://myatrealty.com/v2/properties/9676757/rental-application-landing-page>

**Disclaimer:**

In preparing this information we have used our best endeavours to ensure the information contained herein is true and accurate, but we accept no responsibility and disclaim all liability in respect to any errors, omissions, inaccuracies, or misstatements that may occur. Prospective tenants should make their own inquiries to verify the information contained herein.

2 BED | 2 BATH | 1 CAR

PRICE:  
\$700 per week

OPEN FOR INSPECTION:  
N/A



@realty National Head Office  
1300299377  
headofficerentals@atrealty.com.au  
[www.atrealty.com.au](http://www.atrealty.com.au)