



SOLD

ESCAPE TO TENERIFFE!

Boasting 112m² of internal space and a total of 173m² of internal and external space, nestled in the heart of Teneriffe, this spacious 2 bedroom, 2 modern bathroom plus study and secure car park apartment is the perfect place to call home.

As soon as you step inside this apartment, you will be instantly captivated by the luxurious finishes and modern spacious design. You will love the open plan living and dining space, that stretches out onto the generous outdoor courtyard, air conditioning for year-round comfort and an abundance of built in and hidden storage is a welcome surprise.

2 BED | 2 BATH | 1 CAR

PRICE:
\$870,000

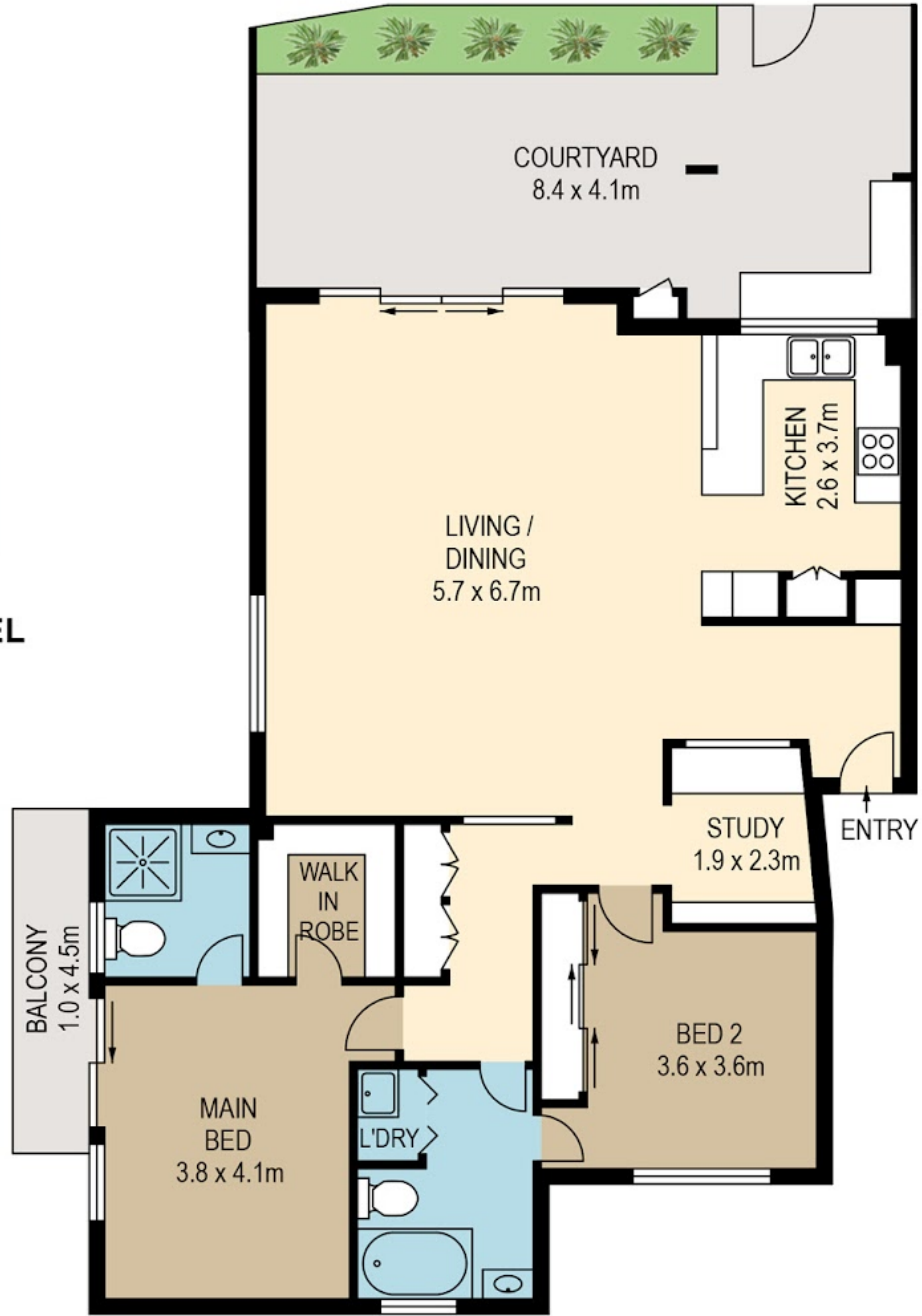
OPEN FOR INSPECTION:
N/A



Nikki Balish
0421226959
nikkibalish@atrealty.com.au
www.atrealty.com.au



GARAGE LEVEL



APARTMENT LEVEL



PLANS SHOWN ONLY INDICATIVE OF LAYOUT. DIMENSIONS ARE APPROXIMATE.

All information contained herein is gathered from sources we believe to be reliable. However we cannot guarantee its accuracy and interested persons should rely on their own enquiries.

apartment	112sqm
external	48sqm
garage	13sqm
total	173sqm



Disclaimer: Please note this floor plan is for marketing purposes and is to be used as a guide only. All dimensions are estimates only and may not be exact measurements.

www.realscope.com.au