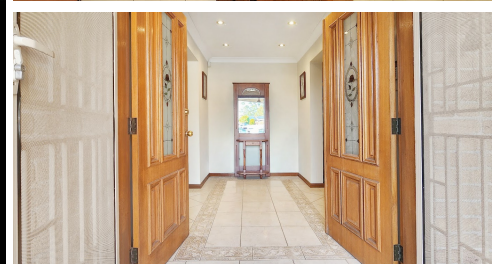


16 HAYDN PLACE BONNYRIGG HEIGHTS



16 Haydn Place Bonnyrigg Heights



GREGORY  
PROPERTY AGENTS  
GREGORY.AGENCY



Your Professional Local Real Estate Sales Team

FOR SALE

## COMPARE THE VALUE

Ask yourself when you have last seen a GIGANTIC 1398sqm block for sale in Bonnyrigg Heights? These opportunities don't come up very often and the last sale of a block this size was in October last year.

The location has an electricity tower out the back but it is fenced off from the main property and still offers rear lane access to the back yard and additional access from the drive-through garage from the front.

If you need lots of room then this property is the one for you.

### Key Features:

#### -Generous Bedrooms and Ample Storage

Enjoy the luxury of four large bedrooms with built-in wardrobes, providing ample space for your family's comfort.

#### - Versatile Drive-Through Garage:

Perfect for the hobbyist or creating an ultimate "man cave" experience, the spacious drive-through garage is ready to accommodate your needs.

#### - Rear Access and Expansive Backyard:

Benefit from double gates offering convenient rear access to the vast back area, providing endless possibilities for outdoor activities and recreation.

#### -Inviting Family and Living Spaces:

Experience sensational family and living spaces that encourage relaxation, entertainment, and quality time with loved ones.

#### - Comfortable Environment:

Stay comfortable throughout the seasons with the convenience of ducted air conditioning, ensuring a enjoyable living environment.

#### - Practical Features and Extras:

Benefit from a large shed equipped with power and lighting, a kitchen with gas cooking and a skylight, a diamond-laid tiled entry with double doors, a solar panel system, a full alarm system, and the convenience of a 3-phase power meter installed.

Don't miss the chance to explore the impressive array of inclusions and experience the true essence of this property. We cordially invite you to visit during our scheduled viewing:

4 BED | 2 BATH | 2 CAR

### PRICE:

\$1,099,999

### OPEN FOR INSPECTION:

N/A



**BJ Gregory**

**0422333333**

[bj@atrealty.com.au](mailto:bj@atrealty.com.au)

[www.atrealty.com.au](http://www.atrealty.com.au)