



**SOLD**

## SPECTACULAR HOME FOR THE FAMILY

Experience the ultimate family lifestyle in this immaculate four-bedroom home built with steel framing provides stability and longevity that's move-in ready and perfect for households looking for comfort and security. Located in a family-friendly area, this immaculate home is situated on an easy-care allotment, so you can spend more time enjoying the home's features and less time maintaining the yard.

At a glance:

- Four generously sized bedrooms, including a master with a walk-in robe and ensuite
- A bright and modern kitchen with stone benchtops with walk-in pantry, quality Westinghouse stainless steel appliances which include a 900mm free standing cooker, dishwasher, and a built-in microwave.
- The large living area with a cozy gas fireplace provides the perfect ambiance for spending quality time with the family.
- A spacious laundry with ample storage space
- Ducted heating and evaporative cooling for year-round comfort
- Ducted vacuum and motorised external roller shutters on all windows for added convenience
- Low maintenance gardens, garden shed and an outdoor alfresco area with remote controlled high-quality motorised café/shade blinds
- Solar panels. security screen doors and deadlocks

With plenty of natural light and a soft colour palette throughout, this home is sure to make you feel at home as soon as you walk in the door. Plus, everything you need is just minutes away, including the renowned Casey fields Sports Precinct, schools, childcare centres, shopping centres, restaurants, and cafes.

Inspections are by appointment only, so book yours today and experience the best of family living in this immaculate retreat.

**4 BED | 2 BATH | 2 CAR**

**PRICE:**  
**\$700,000**

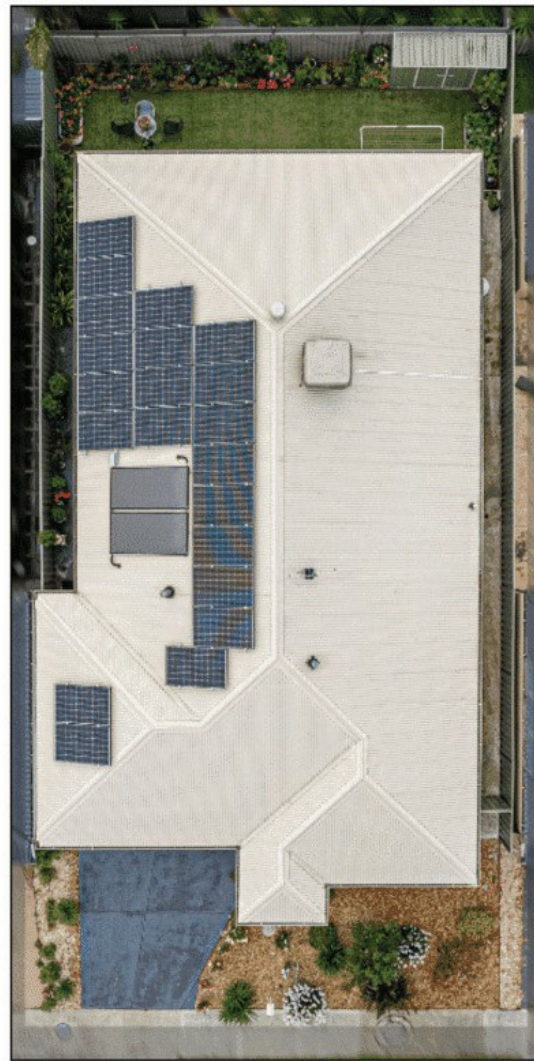
**OPEN FOR INSPECTION:**  
**N/A**



**Leon D'Penha**  
**0415205032**  
leon.dpenha@atrealty.com.au  
[www.atrealty.com.au](http://www.atrealty.com.au)



Floor Plan



Site Plan



Disclaimer: Please note this floor plan is for marketing purposes and is to be used as a guide only. All dimensions are estimates only and may not be exact measurements.