



SOLD

RENOVATED DUPLEX PAIR ON ONE TITLE - SOUTHPORT JANINE - 0419534436

Positioned in the heart of Southport, QLD, this unique property offers opportunity and potential for any buyer looking to make their mark.

Situated on 579m² of land in a prime location, this duplex pair have been tastefully renovated inside and out and is close to local schools, shops, medical facilities and public transport.

A fantastic opportunity for investors or owner occupiers, this property is move-in ready and a must to inspect.

Unit 1 - 2 bedrooms with built ins and ac plus large, carpeted rumpus/third bedroom, tiled kitchen with pantry, and dining, sliding stacker doors opening out onto a good sized entertaining deck, single lock up garage and off street parking for 2 more, secure side or front entry, updated bathroom and separate laundry.

Unit 2 - 2 carpeted bedrooms with built ins and ac, polished concrete floors through kitchen and living, generous, recently landscaped yard for pets and kids, off street parking for 2 cars, new tiled bathroom, updated kitchen with electric appliances, separate laundry, sliding stacker doors opening onto large deck perfect for enjoying the Queensland sunshine or al fresco entertaining.

Whether it's an investment property, or a family home you are looking for, this unique property is the perfect opportunity for anyone looking to make their mark in the Northern end of the Gold Coast.

With no tenant, currently in place, this property is ready for the new owners or tenant's to move in. Don't miss out on this opportunity – contact Janine today to arrange an inspection- 0419534436

What's To Love:

- * 4 bedrooms, rumpus or 5th bedroom, 2 bathrooms, 2 kitchens
- * 2 separate laundries, separate entrances
- * NO Body Corporate
- * Renovated inside and out
- * New kitchens, new bathrooms, new flooring, new doors and windows, freshly painted inside

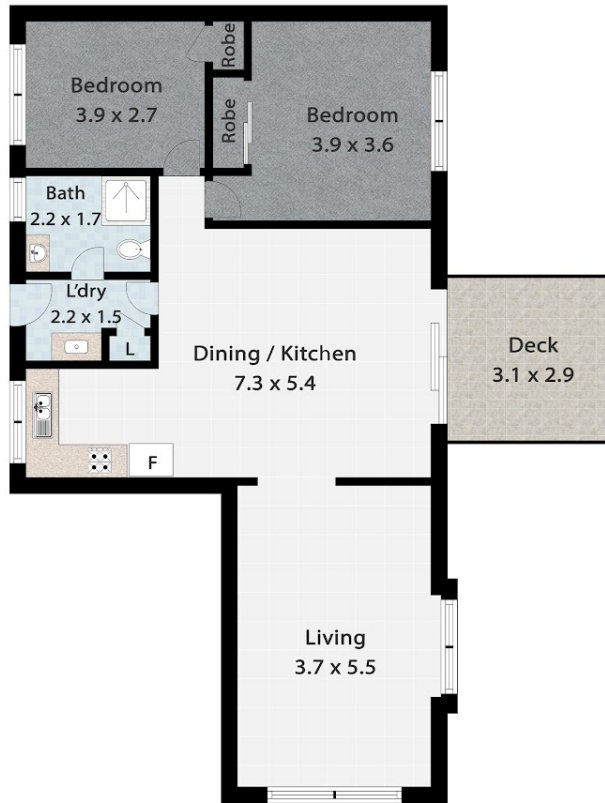
4 BED | 2 BATH | 4 CAR

PRICE:
\$1,130,000

OPEN FOR INSPECTION:
N/A



Janine Redwood
0419534436
janine@atrealty.com.au
www.atrealty.com.au



1/38 BLAKE ST, SOUTHPORT

🛏 Bed 2 🚿 Bath 1

INTERNAL 82m² | EXTERNAL 9m² | TOTAL 91m²

@realty

Janine Redwood 0419 534 436

Measurements are approximate only and no responsibility is taken for any error, omission, or mis-statement. This is for illustrative purposes only and should be used as such by any prospective purchaser. www.picsandmortar.com.au

Disclaimer: Please note this floor plan is for marketing purposes and is to be used as a guide only. All dimensions are estimates only and may not be exact measurements.

Janine Redwood
 0419534436
 janine@atrealty.com.au
www.atrealty.com.au

@realty