



SOLD

BLUE RIBBON POSITION 5 MINUTES WALK (550METERS) TO THE GLEN SHOPPING AND GLEN WAVERLEY SECONDARY COLLEGE.

NO BODY CORPORATE FEE\$! Modern low-maintenance luxury in the renowned Glen Waverley Secondary College catchment (STSA) This superb architectural design masterpiece with south facing modern luxury, just 5 minutes' walk to The Glen Shopping Centre (550Meters approx.) that is within moments to elite educational amenities including Wesley College, Glen Waverley Primary, Glen Waverley Secondary College (600 meter approx.) and close to Caulfield Grammar, Deakin and Monash University.

This brick home comprises of 4 bedrooms and study nook, large lounge room, dining room. Upstairs, the master bedroom with WIR and full ensuite and study, and the other 2 bedrooms serviced by a spacious family bathroom and family room. While the downstairs guest room is serviced by a good-sized bathroom, A smart study nook at the front surrounded by floor to ceiling glass windows, catching all the natural lights. Heading from the front entrance, you walk pass the 5 and a half meters tall, large glass garden window, it makes you feel as if you are surrounded by the natural greenery in the park.

You soon approach the Gourmet kitchen with gas cook top, equipped with quality European stainless-steel appliances, rangehood and plenty of storage space, overlooking the rear garden, the outdoor entertainment area through the open plan formal lounge and the large dining room, featuring heating, cooling and remote double garage.

Bus and Glen Waverley Train station, Village cinemas and the culinary delights of Kingsway, cinema and Novotel Hotel complex. In one of Glen Waverley's most sought-after streets. It is absolutely an investors dream offers high capital growth and attractive rental income. Transport options including buses and trains plus easy access to the M1 Monash and Eastlink freeways.

*Max & Max 2020 Real Estate T/A atrealty may refuse to provide further information about the property if you prefer not to disclose your Full Contact Details including Phone Number. Photo ID required when entering the property.

4 BED | 3 BATH | 2 CAR

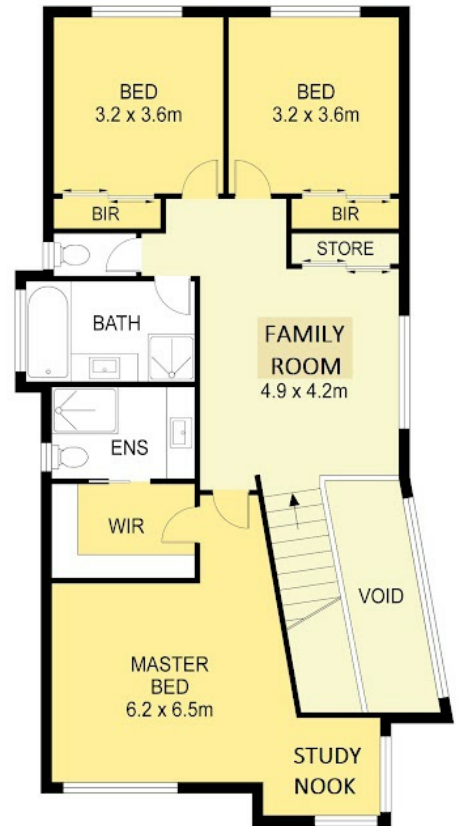
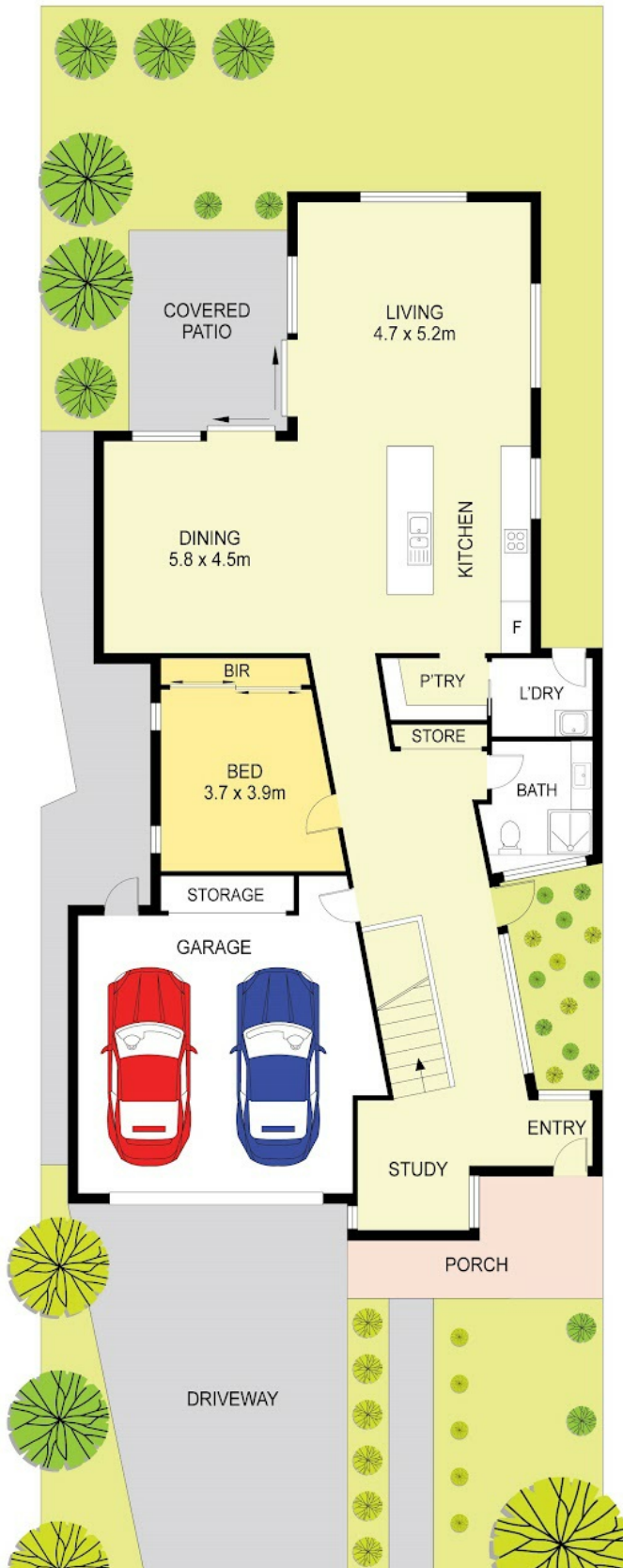
PRICE:
\$1,748,000

OPEN FOR INSPECTION:
N/A



Peter To
0411563838
peter.to@atrealty.com.au
www.atrealty.com.au

37B Charlotte Street, Glen Waverley



FIRST FLOOR



Disclaimer: Please note this floor plan is for marketing purposes and is to be used as a guide only. All dimensions are estimates only and may not be exact measurements.



Scale in metres. Indicative only. Dimensions are approximate. All information contained herein is gathered from sources we believe to be reliable. However we cannot guarantee its accuracy and interested persons should rely on their own enquiries



Internals : 260m²

