



SOLD

STUNNING GEORGIAN RESIDENCE IN THE ZONED EAST DONCASTER SECONDARY AND SERPELL PRIMARY.

This double storey beautiful brick home is located close to The Pines and Tunstall Square shopping centre and just a short distance to the zoned renowned East Doncaster Secondary College (STSA), and Milgate Primary School (STSA), with plenty of other education options close by. This property is perfectly positioned for families with school-aged children.

As you enter the property, you'll be greeted by an abundance of natural light and an open plan living and dining area that's perfect for hosting guests. The timber kitchen features high-quality European appliances, gas cooktop, powerful rangehood, dish washer and plenty of storage space,

Upstairs, the master bedroom features walk-in robes and ensuite plus a study nook. Whilst the other good sized three bedrooms all with build-in robes. The bathrooms are equally impressive and spacious with a sleek and sophisticated finish. You'll also appreciate the large low-maintenance manicured landscaped rear garden, which provides the perfect space for outdoor entertainment, BBQ and family gatherings.

Additional luxury appointments include ducted heating and evaporative cooling, timber flooring, new carpets, large remote double garage. All of these features combine to create a truly exceptional living experience that's both comfortable and convenient.

Just meters to the bus and short drive to the train station, easy access to the M3 Eastern freeway and Eastlink, For recreation and leisure pursuits, stretch your legs at Mullum Mullum Linear Park and a quick drive to the Yarra River trails in Warrandyte.

*Max & Max 2020 Real Estate T/A atrealty may refuse to provide further information about the property if you prefer not to disclose your Full Contact Details including Phone Number. Photo ID required when entering the property.

Disclaimer: Every care has been taken to verify the accuracy of the details in this advertisement, however, no guarantee for its accurateness. Prospective buyers are requested to take such

4 BED | 2 BATH | 2 CAR

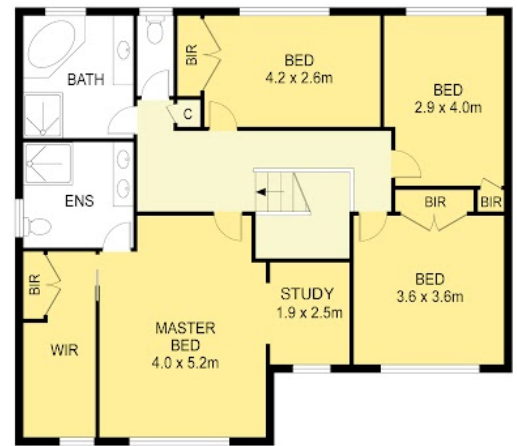
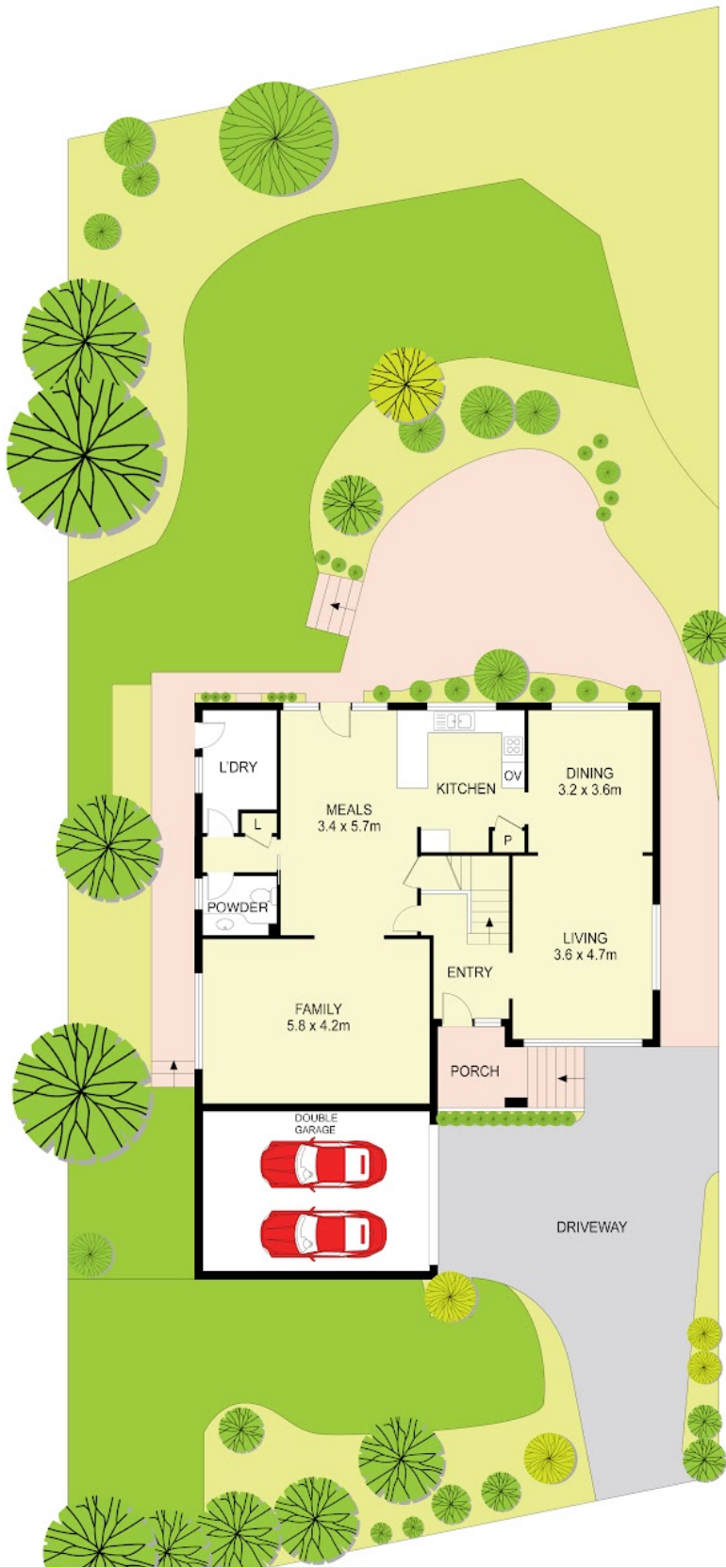
PRICE:
\$1,656,000

OPEN FOR INSPECTION:
N/A



Peter To
0411563838
peterto@atrealty.com.au
www.atrealty.com.au

30 Springwood Close Donvale, Donvale



FIRST FLOOR

Disclaimer: Please note this floor plan is for marketing purposes and is to be used as a guide only. All dimensions are estimates only and may not be exact measurements.



Scale in metres. Indicative only. Dimensions are approximate. All information contained herein is gathered from sources we believe to be reliable. However we cannot guarantee its accuracy and interested persons should rely on their own enquiries