



SOLD

NEW TO MARKET / OFFERS OVER \$695,000: HI-SET DOUBLE STORY PROPERTY OFFERING SPECTACULAR VIEWS OF THE BEAUTIFUL LEAFY SUBURB OF CARAVONICA.

Caravonica is highly desirable and offers a tranquil and picturesque living environment surrounded by lush greenery and natural beauty.

This fantastic property is in a quiet elevated pocket of Caravonica, and features:

- Beautiful Hard wood timber style kitchen with pantry & ample cupboard space, perfect for culinary enthusiasts, and featuring captivating views towards the mountains and Walsh's Pyramid in the distance.
- Three oversized bedrooms, thoughtfully designed with built-in wardrobes, air-conditioning, and fans for optimal comfort.
- The high set ceilings, measuring 2.7 meters, create an airy and spacious atmosphere throughout the upper level.
- Expansive windows allow natural light to flood the living spaces and provide excellent ventilation, allowing cool breezes to flow year-round.
- The home showcases pristine polished hardwood timbers, including Brush Box Flooring, Northern Brush Box Mahogany Balustrading, and Spotted Gum. Enjoy scenic afternoon refreshment whilst entertaining on the upper deck veranda with friends and family.
- Ample linen space provides convenient storage options.

Downstairs features:

- Three additional living spaces, offering flexibility for various purposes such as a media room, lounge area, or playroom.
- One bedroom on the lower level, providing privacy and versatility for guests or extended family members.
- A designated study/cyclone shelter, ensuring a secure space for work or as a safety measure during extreme weather conditions.
- A removable pinned wall allows for a customisable and open plan living arrangement, adapting to your changing needs.
- An oversized combined shower, toilet, and vanity.
- The oversized double garage features a single roll-up door to the rear, enabling direct access to the rear garden.

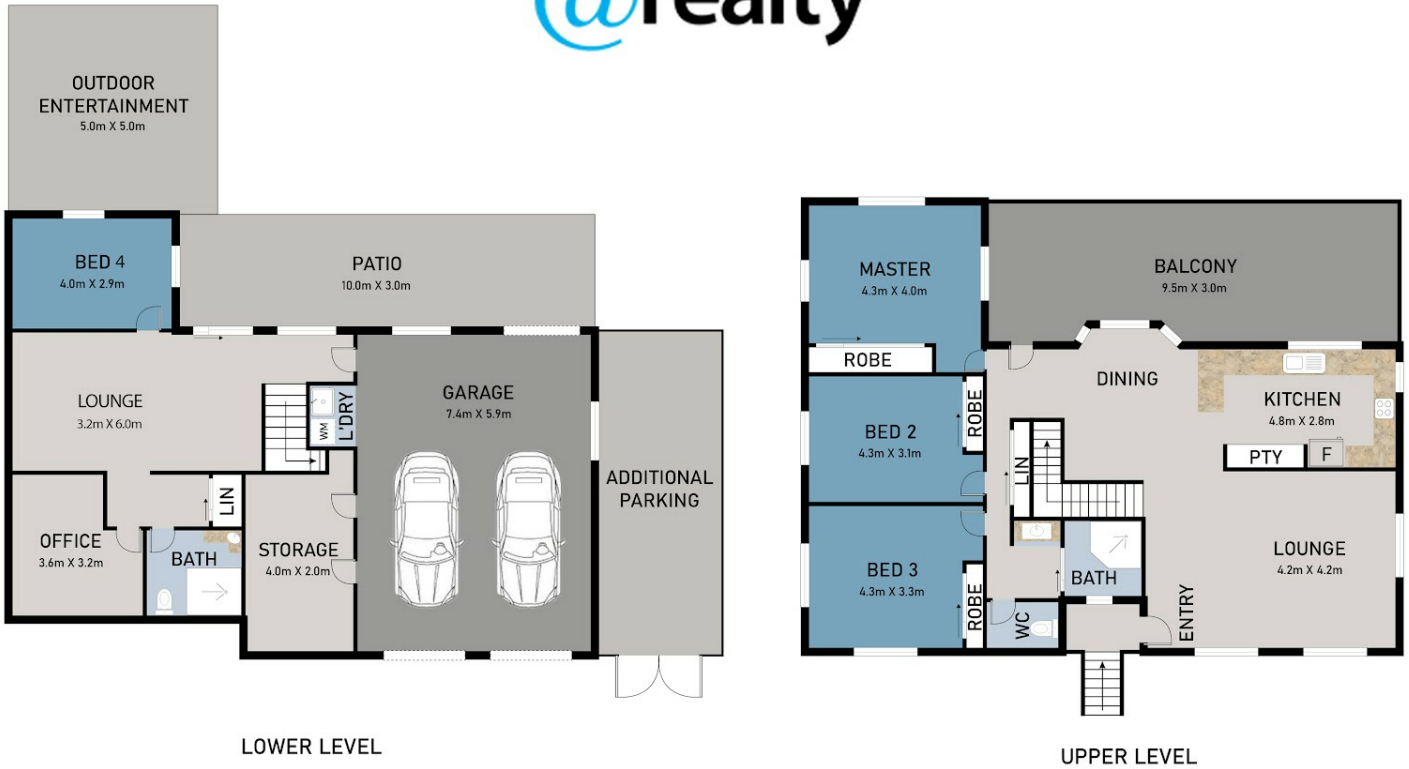
4 BED | 2 BATH | 2 CAR

PRICE:
\$758,000

OPEN FOR INSPECTION:
N/A



Stephen Ward
0487395456
stephenward@atrealty.com.au
www.atrealty.com.au



14 Barellan Close, Caravonica

FLOOR PLAN

This floor plan including furniture, fixture measurements and dimensions are approximate and for illustrative purposes only. The Agent gives no guarantee, warranty or representation as to the accuracy and layout.

Disclaimer: Please note this floor plan is for marketing purposes and is to be used as a guide only. All dimensions are estimates only and may not be exact measurements.