



# SOLD

## PRICE REDUCED TO MEET THE MARKET!!!!

This large Queenslander retains many of its original features, including 12ft ceilings, timber breezeways above doors, large double hung windows and an open brick fireplace this home is perfect for renovation or removal. The block 1012m2 block faces Wood Street and is close to the commercial hub of Warwick and a stone through from the town's main medical centers.

- 3 large bedrooms
- Central hallway
- Living room with a twin set of double hung windows and brick fireplace.
- Sleep out that is used for private office / dressing room off two bedrooms.
- Front enclosed sleepout and small outdoor patio
- Large kitchen with dining area and walk in pantry and original wood stove
- Bathroom and rear closed in veranda
- Laundry
- Large covered entertainment area

Yes, this home needs work, but it has the all the original attributes and a great floor plan. The owners are keen to have a contract in the new financial year, so inspect now.

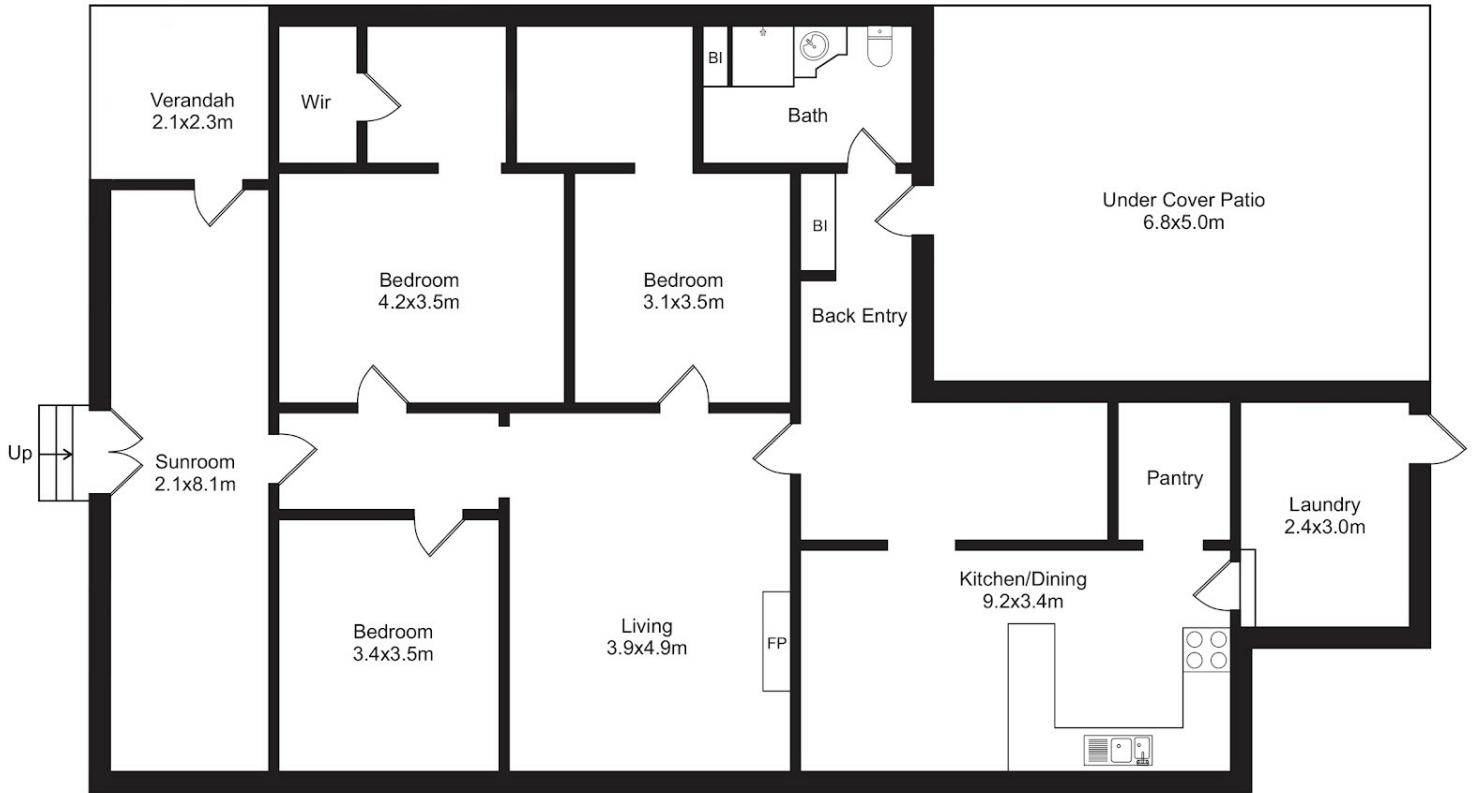
4 BED | 1 BATH | 0 CAR

PRICE:  
\$300,000

OPEN FOR INSPECTION:  
N/A




**Darryl Evans**  
**0477777357**  
darryl@atrealty.com.au  
[www.atrealty.com.au](http://www.atrealty.com.au)



62 Wood St  
Warwick  
Block Size 1012 m<sup>2</sup>

 3
  1
  1

Plan shown is only indicative of layout  
 Dimensions are approximate only  
 No responsibility will be taken for any error or mis-statement  


@realty

Darryl Evans  
0477 777 357

Disclaimer: Please note this floor plan is for marketing purposes and is to be used as a guide only. All dimensions are estimates only and may not be exact measurements.

Darryl Evans  
 0477777357  
 darryl@atrealty.com.au  
 www.atrealty.com.au

@realty