



FOR SALE

WELCOME TO YOUR DREAM HOME!

This luxurious four bedroom home in Goonellabah, NSW Australia is the perfect family home. Boasting 285 square meters of floor area and 895 square metres of manicured land, it offers plenty of living and entertainment space. With views to the valley and The Nightcap ranges beyond .

You will be instantly impressed with the features of this property, both inside and out.

The outdoor areas feature a top floor balcony, a lower floor deck with undercover entertaining area flowing out to the 12 metre salt water swimming pool and a fully fenced yard.

The house features four spacious bedrooms with ensuite and 2 large family bathrooms

You'll find built-in wardrobes and a separate study/retreat area for either parents or teens.

A double car remote door garage. And a great floorplan to accommodate any family dynamic.

Be comfortable year round with split system air conditioning and you can enjoy the benefits of the

7.5 KW solar panels for an eco-friendly home.

This house is ready for you to move into and available for immediate occupancy.

It is a great opportunity for a family to enjoy the ultimate lifestyle with a spacious, private and modern home.

Experience the luxury of this family home today. It is an opportunity not to be missed. With all the features and amenities you need for comfortable livingyou'll feel right at home.

*3000 and 2000 litre water tanks

*20 mins to Ballina

*45 minute to Byron Bay Main Beach

*Footpath all the way to Lismore CBD

4 BED | 3 BATH | 2 CAR

PRICE:

\$995,000

OPEN FOR INSPECTION:

N/A



Vicki Cooper

0418231955

vickicooper@atrealty.com.au

www.vickicooper.com

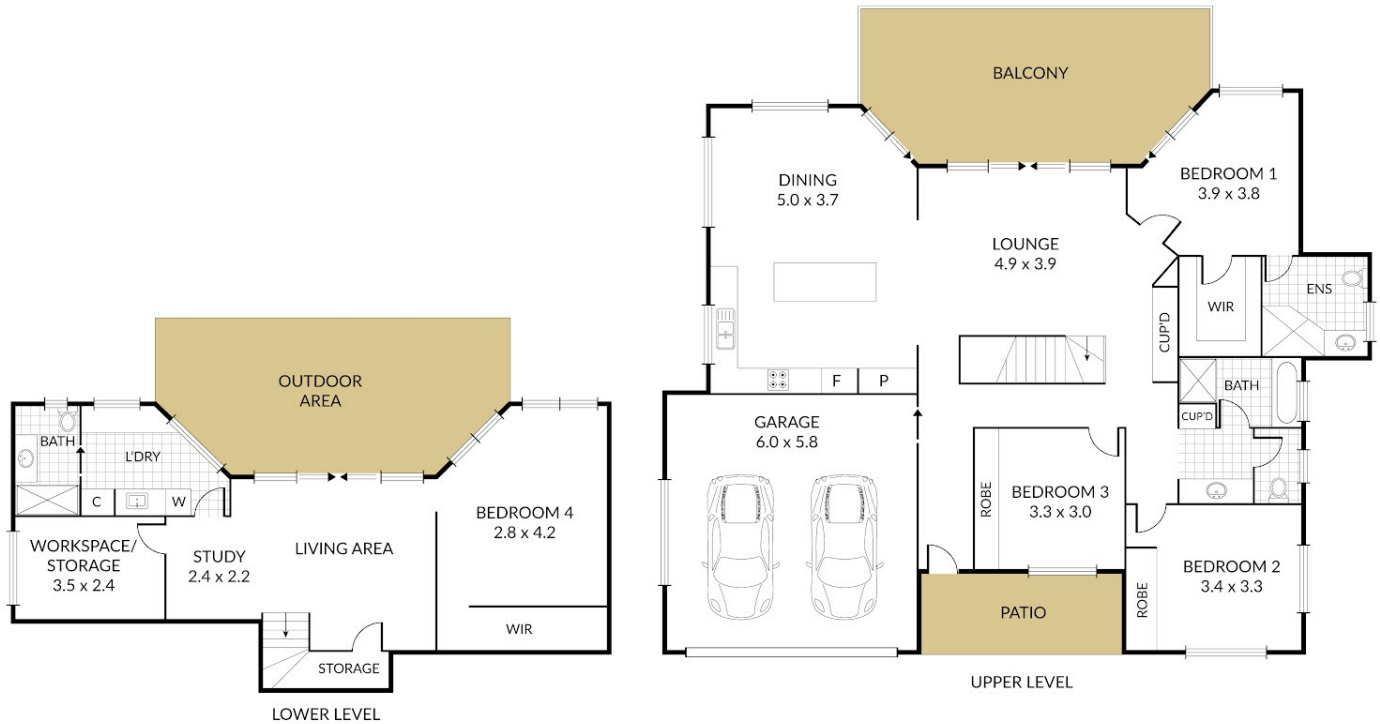
Internal 234m² External 63m² Total 297m²

11 Heather Avenue, **Goonellabah**



NORTH

4 x 3 x 2 x



NOTE: Every precaution has been taken to verify the accuracy of the above details. However, prospective purchasers are advised to make their own enquiries.

Disclaimer: Please note this floor plan is for marketing purposes and is to be used as a guide only. All dimensions are estimates only and may not be exact measurements.