



SOLD

LEVEL LIVING CLOSE TO FACILITIES..

This neat 3 bedroom near level brick and tile home is in a great part of Bowraville. A fantastic little home for a young couple starting out or older folk looking to downsize in their retirement. Centrally located, you can walk to most of the facilities with a supermarket, various shops and doctor's surgery all within 500m. The local primary and high school only 150m and the beautiful Community Gardens across the road.

Other features include -
Polished Timber floors
Single lock up garage
Fenced level 685 m2 block

Well Maintained brick and tile homes under \$300k are getting harder to find so call today to inspect!

Note: We are a Local Nambucca Valley agency with our head office on the Gold Coast.

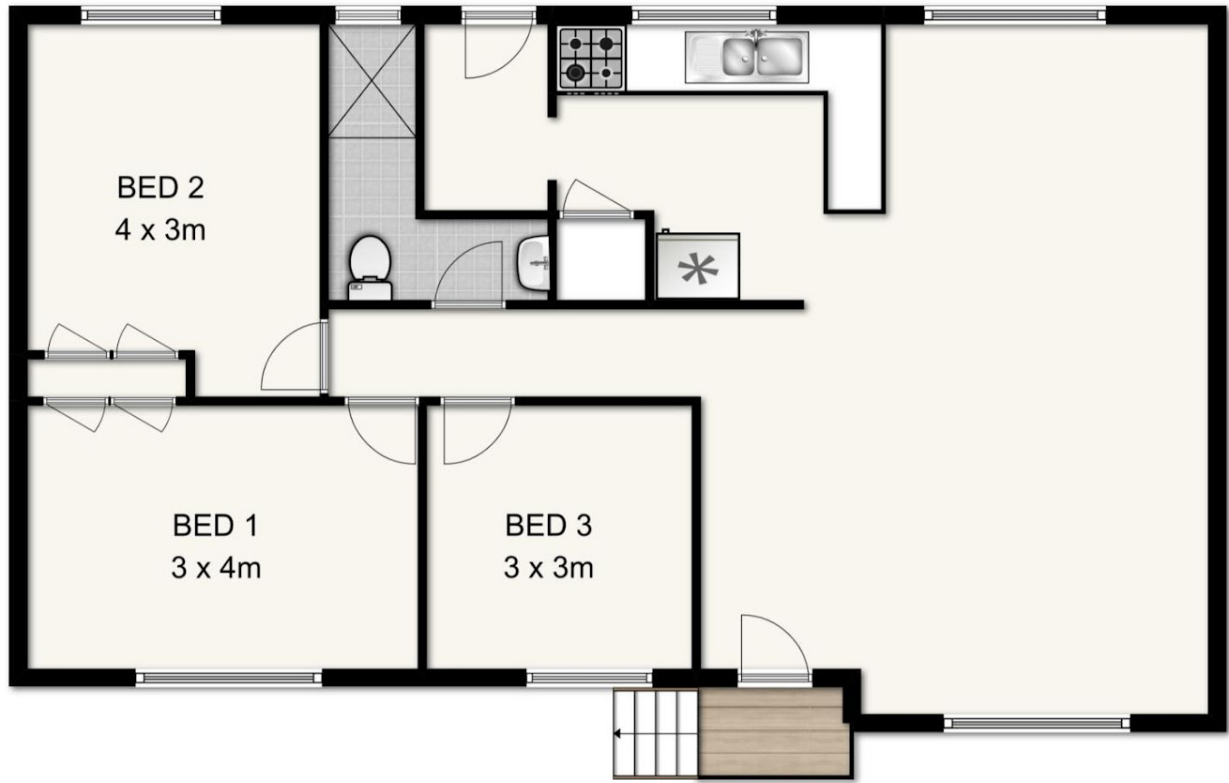
3 BED | 1 BATH | 0 CAR

PRICE:
\$299,000

OPEN FOR INSPECTION:
N/A



Craig Bellamy
0412080287
craig.bellamy@atrealty.com.au
www.atrealty.com.au



TOTAL: 95 sqm

11 YOUNG ST, BOWRAVILLE

This floor plan is not to scale. Areas and dimensions are approximate and therefore plan should only be used for illustrative purposes.

Disclaimer: Please note this floor plan is for marketing purposes and is to be used as a guide only. All dimensions are estimates only and may not be exact measurements.