



FOR SALE

NERANG RIVERFRONT & MOUNTAIN VIEWS - THE MARINA CONCOURSE, ROYAL PINES

This near new Luxurious 2 Bedrooms with Study Nook, Southeast facing, apartment is positioned at the very top (6th Floor) of Block C overlooking the Nerang River and Tambourine Mountains. It is located within the Marina Concourse Precinct in the prestigious Royal Pines Resort & Golf Club.

The manicured and expansive grounds that surround The Marina Concourse complex exudes a charm and serenity that is absolutely magnificent. It features a tidal river fed lake, walking treks, residents swimming pool, outdoor cafe & restaurant, golf courses, child care centre and beautiful landscaped gardens.

Away from all the traffic noise, this near new residence offers luxurious open plan living spaces, generous size bedrooms, and superior fittings and finishes. High ceilings, full-height sliding windows and generous floor plan capture the natural light, breezes and amazing views of the River and Tambourine Mountains from every part of the living areas and bedrooms.

Resident amenities include a pool and adjacent pavilion, privately nestled between Marina Concourse and the Nerang River, sheltered barbeque facility and a professionally managed cafe and restaurant on the Marina Level.

Great shopping is close to home with Benowa Village a short walk away. Benowa Gardens and Pacific Fair only minutes away.

This apartment features:

- Secure Basement Parking and On Title Storage in basement
- Generous open plan living with Zone Ducted Aircond
- Stone bench tops in kitchen (complete with built in Fridge) and Bathrooms
- Stainless steel appliances including dishwasher, 900mm electric oven and gas cooktop
- Travertine Tiles in Kitchen & Bathrooms and Timber Floor in Living areas. Top quality Carpet to bedrooms
- LED downlights throughout.
- Body Corporate Levy Approx \$104 per week
- Council Rates Approx \$35 per week

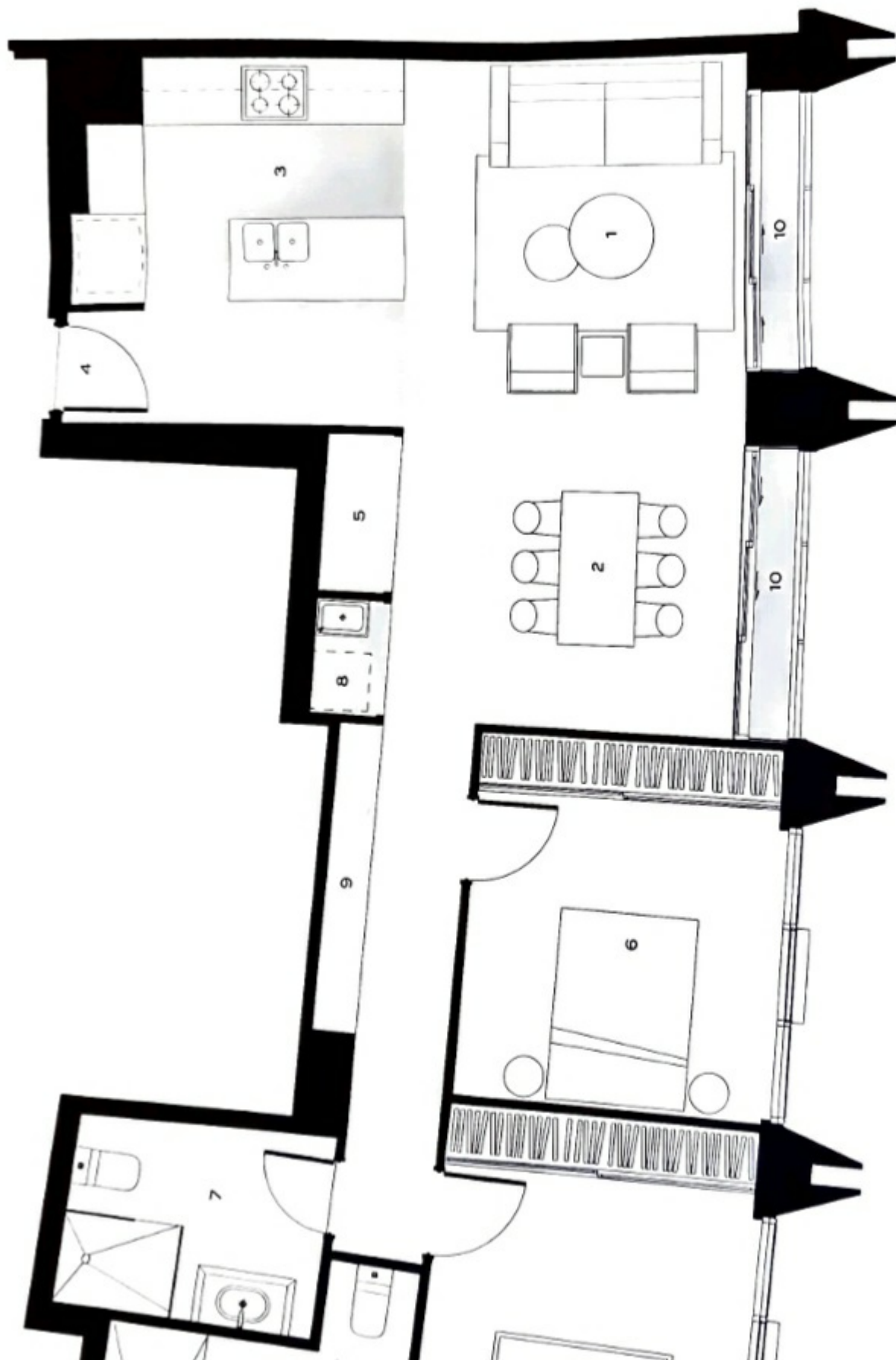
2 BED | 2 BATH | 1 CAR

PRICE:
\$749,000

OPEN FOR INSPECTION:
N/A

@realty

Jose Morales
0410577298
jose@atrealty.com.au
www.atrealty.com.au



Disclaimer: Please note this floor plan is for marketing purposes and is to be used as a guide only. All dimensions are estimates only and may not be exact measurements.

