



# SOLD

## UNDER OFFER - CONTACT AGENT

Welcome to this newly renovated abode, located in the heart of Mayfield.

This single level home has been designed to take advantage of the natural light, large windows and glass pane doors situated throughout, evokes character and a cozy, airy feel.

The kitchen is modern, with plenty of bench space and storage for all your needs. It also includes all your modern conveniences, a built-in dishwasher, gas cooktop and electric wall oven.

The living room is bright and inviting, with a reverse cycle aircon and ceiling fans throughout, providing comfortable temperatures year-round. And for those who work from home, there is also a study area to take advantage of.

The two bedrooms are of good size, both fitted with built-in wardrobes offering plenty of storage space.

Outdoors, you will find a small shed perfect for all your storage needs, a beautiful big tree that keeps the backyard cool with leafy green filtered sunlight through the warmer months. The property also offers a large, fully fenced yard, perfect for kids and pets.

This property is in a prime location, only a short walking distance to Josie Coffee shop, Onyx Espresso bar and several other cafes, close proximity to Newcastle CBD and its glorious city beaches, schools, Mayfield shopping precinct (coles, woolworths and ALDI), transportation services, restaurants and licensed venues.

This house is sure to impress and is a great opportunity not to be missed. With all the features and amenities it has to offer, this house is sure to be snapped up quickly!

2 BED | 1 BATH | 1 CAR

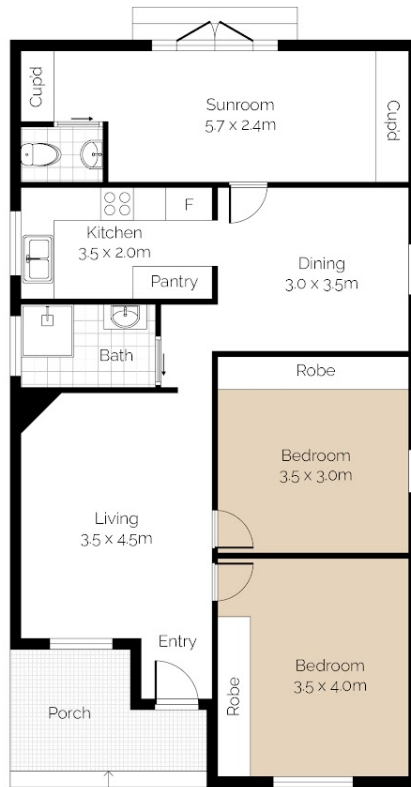
PRICE:  
\$795,000

OPEN FOR INSPECTION:  
N/A

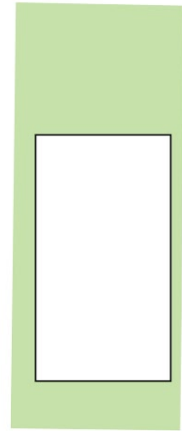


**Joel Pyne**  
0429080595  
joelpyne@atrealty.com.au  
[onethreeproperty.com.au](http://onethreeproperty.com.au)

# 30 Wilkinson Street, Mayfield



Site Map  
Not to Scale



Wilkinson St

\*Not to scale. Floor plan for illustration purposes only. Dimensions are approximate. All information contained herein is gathered from sources we believe to be reliable, however, we cannot guarantee its accuracy and interested persons should rely on their own enquiries.



Disclaimer: Please note this floor plan is for marketing purposes and is to be used as a guide only. All dimensions are estimates only and may not be exact measurements.

**Joel Pyne**  
**0429080595**  
joelpyne@arealty.com.au  
onethreeproperty.com.au

