



**SOLD**

## NEAT FAMILY HOME

Home makers this one is for you!! With strong foundations and great potential, this property is ready to become a family home. At street level she presents with easy care tropical gardens and a wide frontage for parking with plenty of options to add some street appeal. NOW PRICED AT JUST \$369000

Down the side of the home is an in ground spa with some entertaining areas around it so the kids will have endless fun splashing about and when they go to bed, this is a quiet space for the adults to relax. Within the backyard is a garden shed for the tools and easy care gardens again with plenty of space to add in or create an oasis or just add water and bring the grass back to life.

Inside the home is a generous open plan living and dining area with tiled flooring and A/C. yellow glass louvered windows add a touch of retro to the space which has been modernised with new tiles and a kitchen that includes an island bench along with wrap around counters and banks of built in storage space.

There are three bedrooms all with large windows to let in the natural light. Bedroom 1 offers loads of built in storage space while bedroom 2 has racked shelving. the bathroom has been made over with modern design and a large shower with a sep toilet. The laundry is hosted on the back verandah that spans the length the home and overlooks the easy care gardens.

Walk to nearby parklands with play areas for the kids, ride your bike with the kids to public and private school options or pop up to the Palmerston shops. Spend your free time at the Palmerston Water Park or Skate Park or take a stroll along the lakes looking for turtles and fish – Palmerston is a thriving suburban setting for the family with loads of activities throughout the year in the quarter, Friday night markets and more.

### Brochure Points:

- Three bedroom family home with strong foundations
- Modern bathroom amenities with large shower
- Three bedrooms, 2 with built in storage space

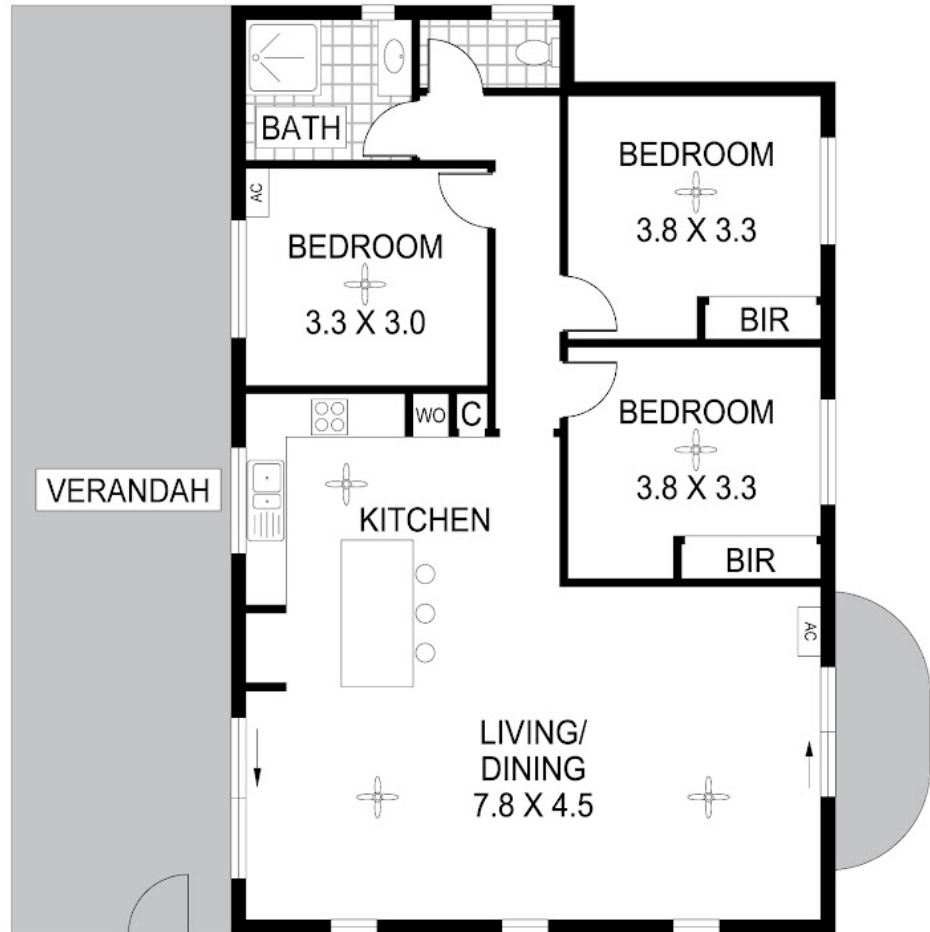
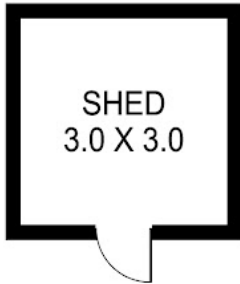
**3 BED | 1 BATH | 1 CAR**

**PRICE:**  
**\$340,000**

**OPEN FOR INSPECTION:**  
**N/A**



**John Simpson**  
**0416228270**  
johnsimpson@atrealty.com.au  
[www.atrealty.com.au](http://www.atrealty.com.au)



Disclaimer: Please note this floor plan is for marketing purposes and is to be used as a guide only. All dimensions are estimates only and may not be exact measurements.

Scale in metres. Indicative only. Dimensions are approximate. All information contained herein is gathered from sources we believe to be reliable. However we cannot guarantee its accuracy and interested persons should rely on their own enquiries

John Simpson  
85 Mollenius Circuit Gray NT 0830

0416228270

johnsimpson@atrealty.com.au

[www.atrealty.com.au](http://www.atrealty.com.au)

