



**SOLD**

## ISLAND VIEW RETREAT

Tucked away behind the merbau fence is a hidden gem just waiting for you to discover. Sitting amongst an array of fruit trees and an established garden setting, this cosy and welcoming home invites you in to unveil a stunning living room, featuring wood burner to warm you through the winter months which adds an ambience that feels like home the moment you step inside. From where you can soak up the amazing view of Western Port Bay and French Island or access the covered balcony that can be used for all year round entertaining. The fully renovated kitchen provides more than ample storage and work space that any would be chef will appreciate. With stainless steel gas cooktop and electric under bench oven, two drawer dishwasher and soft close drawers, not to mention the butler's pantry that provides the extra storage we all need. All this adjacent to the generous dining/family area, and study/4th bedroom.

The master bedroom has two double built-in-robos with good size ensuite that is neat as a pin. A further two generous bedrooms with built-in-robos are serviced by the family bathroom and second toilet.

The upgrades throughout the home are many, starting with beautiful engineered timber flooring throughout, new carpets, fresh paint too many extras to mention here.

The Gurdies is a quiet community only approx. 30 minutes' drive to Cranbourne or a little more by bus. Four minute drive to local shops at Grantville, also banking, post office, ambulance station, medical and soon to be opened supermarket.

Phillip Island only approx 40 minutes for weekends of fun for family and visitors.

With oversized single lock-up garage, ample water tanks, heating and cooling, gas bottle connection and some of the most envied sunsets anywhere, this is a must see home.

Inspections highly recommended, call now!

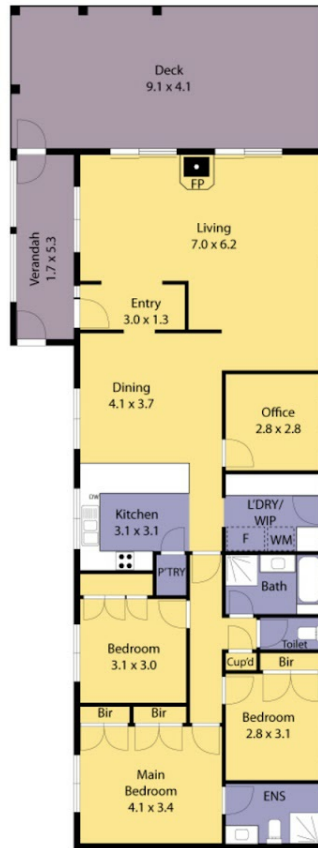
**4 BED | 2 BATH | 1 CAR**

**PRICE:**  
\$615,000

**OPEN FOR INSPECTION:**  
N/A



**Vincent Haupt**  
**0409704667**  
vin@atrealty.com.au  
[www.atrealty.com.au](http://www.atrealty.com.au)



approx. 1,496sq - 139m<sup>2</sup> (including garage and alfresco porch and balcony)  
 \*While every precaution has been taken to verify this information, it does not constitute any representation by the agent or vendor.\*

SANDRA HAUPT | 0438 150 155 | [sandra@atrealty.com.au](mailto:sandra@atrealty.com.au)

VINCENT HAUPT | 0409 704 667 | [vin@atrealty.com.au](mailto:vin@atrealty.com.au)  
[www.atrealty.com.au](http://www.atrealty.com.au)

Disclaimer: Please note this floor plan is for marketing purposes and is to be used as a guide only. All dimensions are estimates only and may not be exact measurements.