



SOLD

BRAND NEW HOUSE AND LAND PACKAGE – NEW HOMES AREA - AVAILABLE NOW AND READY TO MOVE INTO!

We are excited to offer this brand new home to market offering large open plan living areas, dream kitchen and in the ever popular new homes area of Rokeby, close to the new Glebe Hill Shopping Centre.

Quality is assured with local Builders Taylor and Beeson completing the project from start to finish.

First home owners grant of \$30,000 applies to this home for eligible purchasers, call Ben for further information.

Fully completed and ready for you to move in, this house and land package offers every amenity for the growing family all on a generous allotment with a good sized landholding of approximately 390m².

- Master Bedroom with walk in robe and seperate ensuite
- Second and third bedrooms are double's with built in robes
- Large kitchen with stone benchtops
- Sundrenched north facing lounge and kitchen
- Double glazed windows throughout
- Reverse cycle airconditioning
- 12 year structural Guarantee
- Six star energy rated home
- LED lighting throughout
- Private yard
- Fully landscaped
- Fully fenced

Please get in touch for further information on our upcoming House and Land Packages using the provided links below.

We have other new homes built to the same high specification as this property available for viewing now, please get in touch with Ben to organise a viewing.

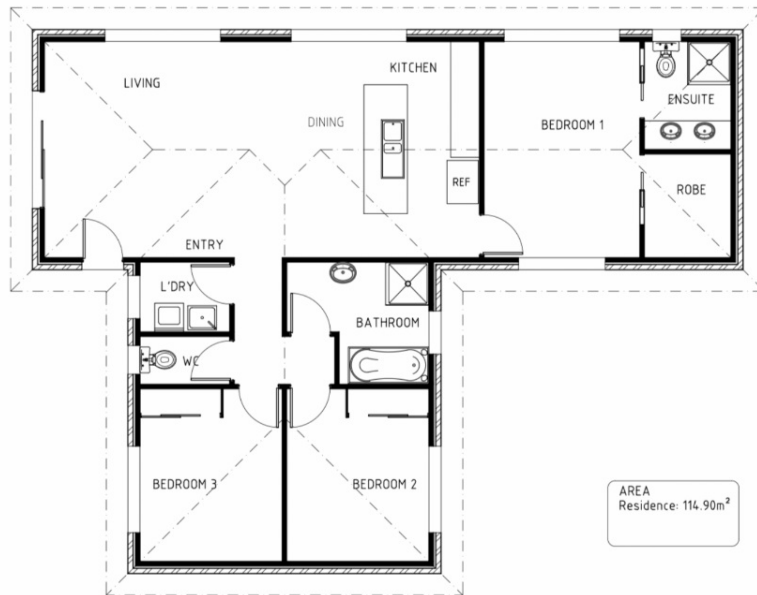
3 BED | 2 BATH | 0 CAR

PRICE:
\$600,000

OPEN FOR INSPECTION:
N/A



Ben Palmer
0417556731
benpalmer@atrealty.com.au
hobarthomes.com.au



Disclaimer: Please note this floor plan is for marketing purposes and is to be used as a guide only. All dimensions are estimates only and may not be exact measurements.