

21 MOUNT BURRELL ROAD, MOUNT BURRELL, NSW, 2484



**SOLD**

## WALLABY GROVE

Welcome to Wallaby Grove

A country retreat where you can reconnect with nature and return to life's pleasures. From this beautiful Queenslander gaze up at the majestic mount Burrell (Burrell comes from the aboriginal word for wallaby.)

The views from this property are lush from every direction and from the wrap around verandah you can watch the wallabies come in at sunset as the clear night-time skies set in.

That's the dream right, a life in the country where there's time to watch the sun rise and set? Where time is measured in how many baskets of fruit you can collect from the fruit trees, the new batch of baby chickens hatching or hearing the call for dinner as you tinker away under the hoist on your vintage mustang in the 16x 6m shed.

Inviting Friends round to ride horses, stay up late round the fire and when they are too tuckered out from so much fun, crashing in one of the two additional studios this rural escape offers.

The Renovated character filled home will leave you feeling inspired for projects, craft with the kids, baking sourdough and pickling the vegetables from your own kitchen garden just outside the gorgeous chefs kitchen.

Rainbow lorikeets shooting past the windows as if dancing , putting on a show or maybe just hoping you will toss out some crumbs from the fresh scones you just cooked in the woodfire oven.

Sunny days at the creek , splashing and laughing , dogs rolling in the freshly mown grass and the kids having the times of their life in the outdoors.

A simpler slower way of life.... What are you waiting for?

Note: If you need finance for this property, bridging finance or for the future please feel free to text for a great broker recommendation who is familiar with this property.

### DISCLAIMER

All information (including but not limited to the property area, floor size, price, address and general property description) is provided as a convenience to you and has been provided to Northern Rivers Property Group / @realty by third parties.

This Information should not be relied upon alone and you should make your own enquiries and seek legal advice in respect to all information about the property contained in this advertisement.

4 BED | 3 BATH | 7 CAR

PRICE:

\$1,150,000

OPEN FOR INSPECTION:

N/A

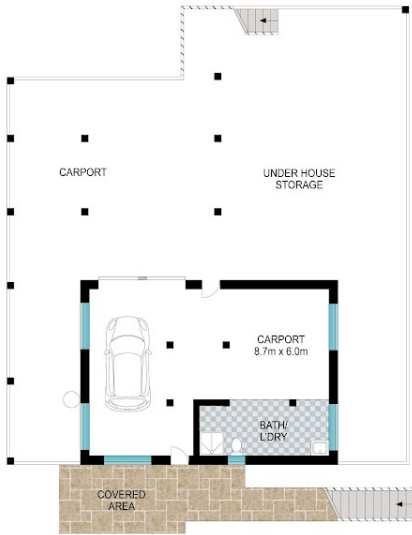


**Paul Stobbie**

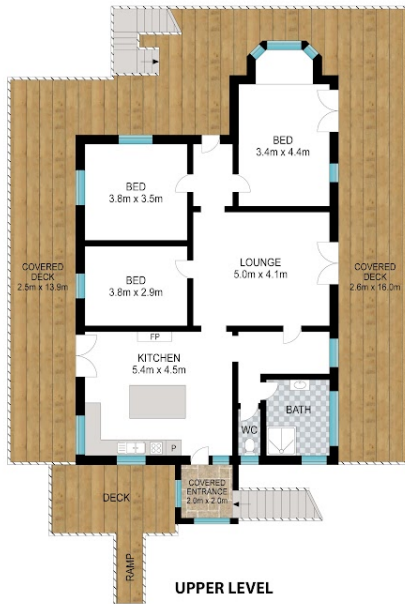
**0448191351**

[paulstobbie@atrealty.com.au](mailto:paulstobbie@atrealty.com.au)

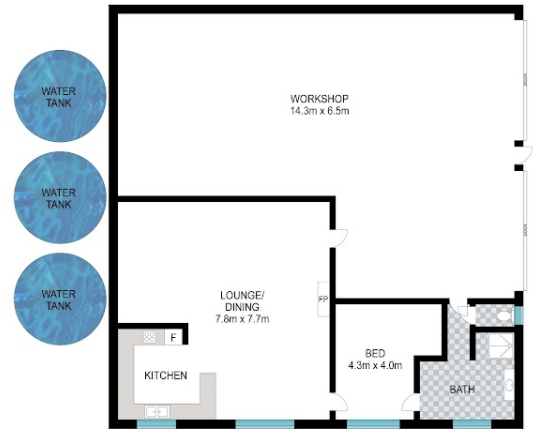
[northernriverspropertygroup](http://northernriverspropertygroup)



LOWER LEVEL



UPPER LEVEL



SHED/STUDIO



Scale in metres. Indicative only. Dimensions are approximate. All information contained herein is gathered from sources we believe to be reliable. However, we cannot guarantee its accuracy and interested persons should rely on their own enquiries.

INT: 248 m<sup>2</sup>  
EXT: 150 m<sup>2</sup>



21 Mount Burrell Road, Mount Burrell



Disclaimer: Please note this floor plan is for marketing purposes and is to be used as a guide only. All dimensions are estimates only and may not be exact measurements.