

118A SHEPHARDS LANE, COFFS HARBOUR, NSW, 2450



SOLD

SOLD BY CHERYL DONALDSON 0466 037 468

If you enjoy the sound of the birds and the cool lush greenery that offers privacy and serenity this home could tick a lot of boxes for you.

The Open Plan living and dining area is flanked with glass doors large windows fill the space with natural light. The contemporary kitchen is the heart of the home and will certainly please the home chef with excellent features including a dishwasher, plenty of bench space and overhead cupboards.

This 3 bedroom home is filled with unique design features that create a feeling of space of bringing the outdoors in. The master bedroom features a huge, built-in wardrobe and fan and overlooks a delightful secret garden with a meditation platform. The other second bedroom is generous in size with easy care flooring and built-in's. The third bedroom could be used as an office or a bedroom with its own glass sliding door out into tranquil gardens.

The main bathroom features Moroccan tiles and has built in Euro laundry there is an adjoining powder room that also features Moroccan tiles and crisp white accents.

Other wonderful features are an art studio that could easily be modified into a workshop, or maybe even a teenage retreat.

Whether you are starting out or slowing down expect the unexpected with this lovely property of privacy and framed by easy care picturesque low - maintenance established gardens.

Located only a short drive from the Coffs Harbour shops restaurants and of course the beautiful beaches. Call Cheryl Donaldson today for your private inspection on 0466 037 468.

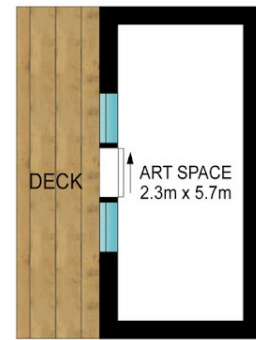
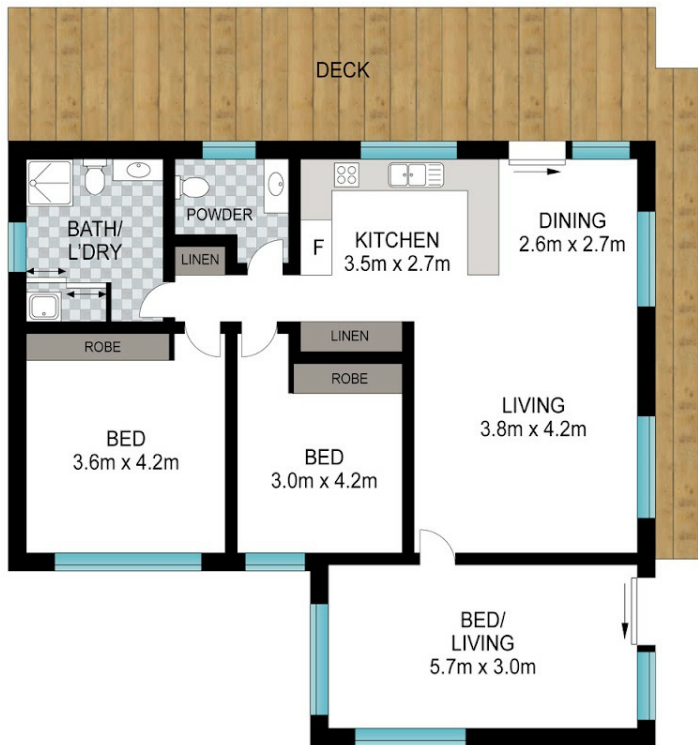
3 BED | 1 BATH | 0 CAR

PRICE:
\$660,000

OPEN FOR INSPECTION:
N/A



Cheryl Donaldson
0466037468
cheryl@atrealty.com.au
www.atrealty.com.au



INT: 107 m²
EXT: 35 m²

Scale in metres. Indicative only. Dimensions are approximate. All information contained herein is gathered from sources we believe to be reliable. However, we cannot guarantee its accuracy and interested persons should rely on their own enquiries.

118A Shephards Lane, Coffs Harbour



Disclaimer: Please note this floor plan is for marketing purposes and is to be used as a guide only. All dimensions are estimates only and may not be exact measurements.

Cheryl Donaldson
0466037468
cheryl@atrealty.com.au
www.atrealty.com.au

