



SOLD

GEM OF OPPORTUNITY: ONLY TWO ON BLOCK, NO BODY CORP FEES!

Discover your perfect family home or investment opportunity in this delightful three-bedroom, two-bathroom unit situated in the best pocket of Noble Park. Boasting a generous land size of 296 square metres, this front unit, single-dwelling brick veneer property is designed to cater to a variety of lifestyles, making it ideal for young families, first home buyers, downsizers and investors alike.

The stylish and spacious interior features a well-appointed wooden style kitchen complete with gas appliances, oven, and dishwasher, ensuring you have everything you need to cater for family dinners and entertaining friends. The beautiful hallway leads to three sizable bedrooms, and includes a master bedroom with a full ensuite for added luxury and convenience.

Comfort is guaranteed with ducted heating and a split-system air conditioner, while modern downlights throughout the property add a touch of elegance. A lock-up double garage provides secure parking with remote control.

One of only two units on the block and with no body corporate fees, this property offers a low-maintenance lifestyle without compromising on space or quality. The expansive front yard offers abundant space for children's recreational activities.

Located within close proximity to Noble Park Shopping Centre, a range of quality schools, childcare facilities and recreational amenities such as the Noble Park Aquatic Centre, this property offers the ultimate in convenience. Additionally, the nearby train station makes commuting to work or weekend adventures a breeze.

Don't miss this opportunity to secure a fantastic property in a sought-after location. Enquire now and experience all this wonderful home has to offer.

For more information call Bruce Ung Today!

Please note : Photo I.D. required at all inspections

3 BED | 2 BATH | 2 CAR

PRICE:
\$690,000

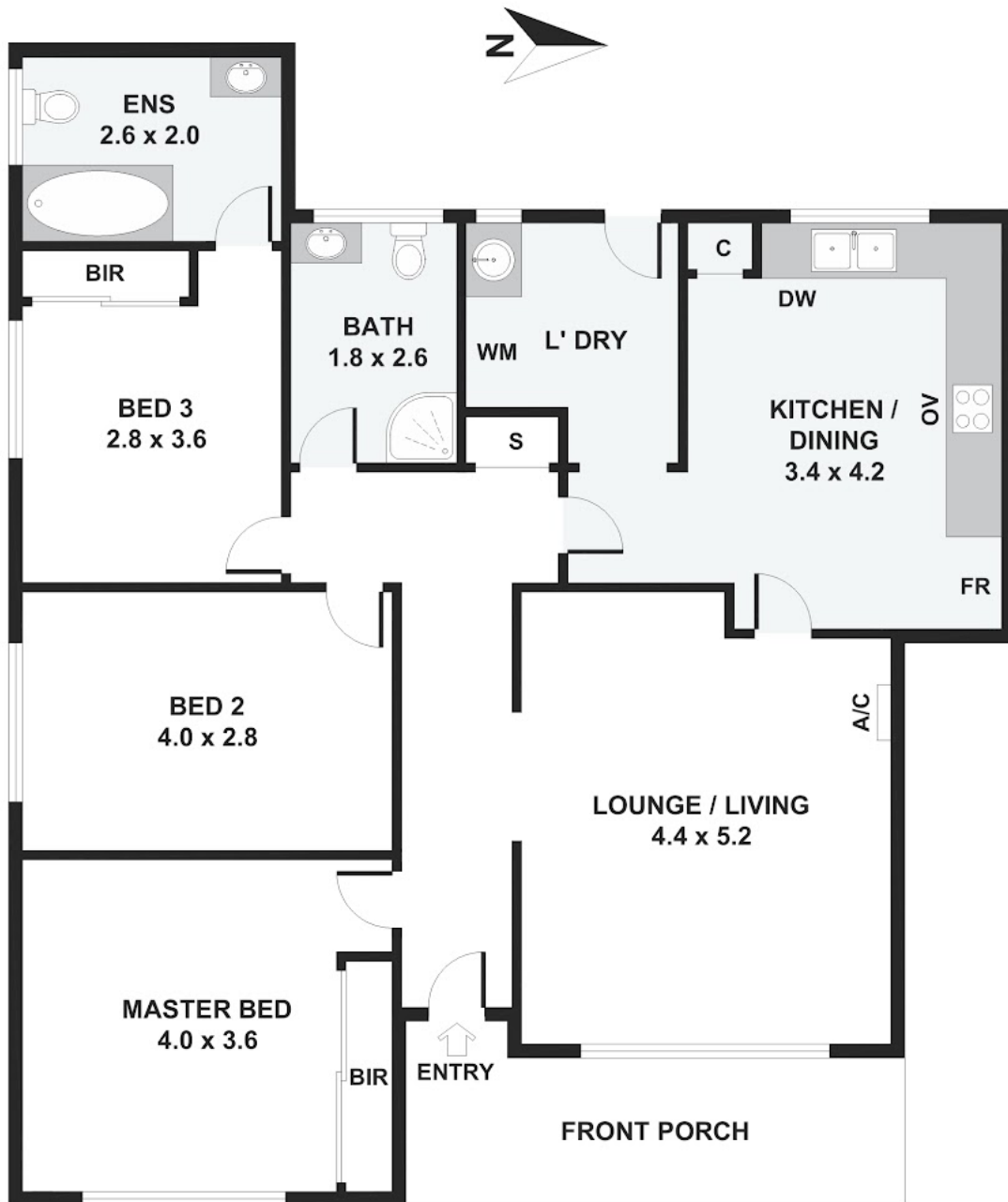
OPEN FOR INSPECTION:
N/A



Bruce Ung
0422353767

bruceung@atrealty.com.au
www.atrealty.com.au

1/26 Gatcum Court, Noble Park



Disclaimer: Please note this floor plan is for marketing purposes and is to be used as a guide only. All dimensions are estimates only and may not be exact measurements.

Please note: All stated dimensions are approximate only. Particulars given are for general information only and do not constitute any representation on the part of the vendor or agent.