



**SOLD**

## QUEENSLANDER IN THE TREETOPS

Imagine enjoying your morning coffee or afternoon sundowners on the sun-dappled spacious deck amongst the tropical ferns.

A tall, characterful and flood-free "Queenslander" nestled on high ground, this classic, elevated home offers the perfect blend of character and style, while highlighting beautiful original features such as polished timber floorboards and high ceilings throughout, French doors and a gorgeous bay window in the master bedroom.

Situated close to Murwillumbah High School and Murwillumbah Primary School, your kids could even walk safely to school a few minutes away and you don't have to drive. You are only minutes to the Murwillumbah CBD with shops, restaurants, trendy cafes and Art-Deco cinema. and also just around 30 minutes to Gold Coast and the Airport and to your choice of beautiful Tweed Coast beaches.

This fabulous home features :

- \* Charming elevated Queenslander with leafy outlook close to town
- \* Characterful polished timber floors, corniced high ceilings, cosy fireplace
- \* Three bedrooms plus sunroom and study/sleepout
- \* Huge covered timber rear deck nestled amongst rainforest ferns
- \* Air-conditioning and fans
- \* Modern chef's kitchen with separate butler's-style pantry
- \* Renovated light-filled bathroom with full, deep bathtub and separate toilet
- \* Downstairs separate covered games patio, laundry, second toilet and heaps of storage
- \* Light and breezy / Flood-free
- \* Ideal size and location for the growing family or first home buyer
- \* Easy access to schools, town, shops, cafes, parks - Everything !

To view contact Michael on 0408 828 982

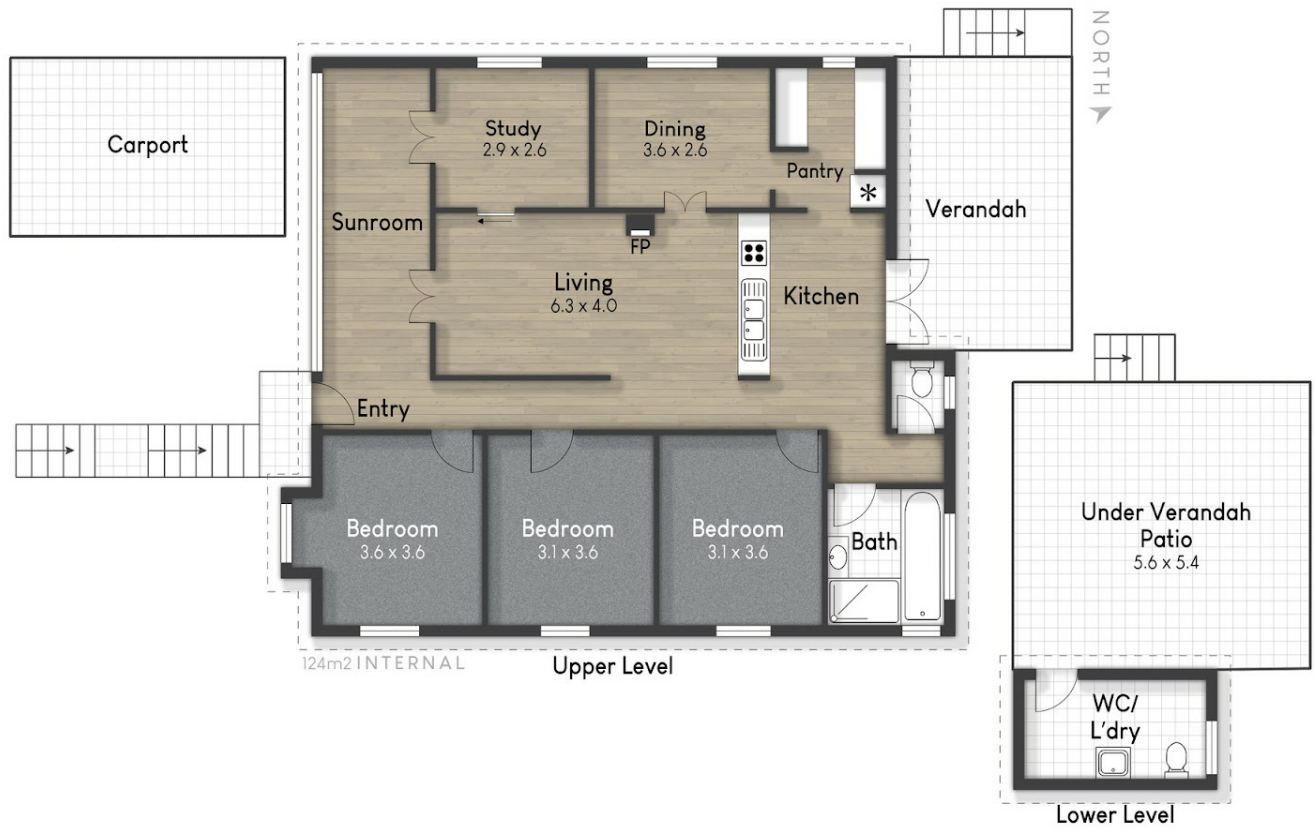
3 BED | 1 BATH | 1 CAR

PRICE:  
\$730,000

OPEN FOR INSPECTION:  
N/A



**Michael Spicer**  
**0408828982**  
michaels@atrealty.com.au  
[www.atrealty.com.au](http://www.atrealty.com.au)



Michael Spicer  
0408 828 982

77 Riverview Street, Murwill  
Internal: 124 m<sup>2</sup> | External: 34 m<sup>2</sup> | Approx Tot

Plans shown are only indicative of layout. Dimensions are approximate.

Disclaimer: Please note this floor plan is for marketing purposes and is to be used as a guide only. All dimensions are estimates only and may not be exact measurements.

Michael Spicer  
0408828982  
michaels@atrealty.com.au  
[www.atrealty.com.au](http://www.atrealty.com.au)

