



SOLD

! SPACIOUS - PRIVATE - ACREAGE OASIS + BIG SHED !

Welcome to 50-54 Gainsborough Drive, D'Aguliar - the ultimate family home for those seeking luxury, space, and privacy on a sprawling 2 Acre block.

Surrounded by peaceful nature sounds and well-established gardens, you will find a truly spectacular dream home including a resort-style pool and expansive decked entertainment space, just made for creating life-long memories with family and friends.

Every square inch of this remarkable property has been thoughtfully designed to maximise the lifestyle potential of the home. Featuring high ceilings throughout and quality finishes at every turn, from the quality kitchen featuring top of the range appliances, stone benchtops and LED skylight, to the outside landscaping that has been meticulously created and manicured to create a private and resort style feel, no expense or time has been spared to establish this masterpiece.

The all-embracing master bedroom is a true retreat with loads of space including ensuite featuring dual basins and a walk-in robe the size of a bedroom in some homes these days, showing just how large this home really is. Imagine waking up to an amazing view every day from your bed and using your private access to the outdoor and fire pit area. Yet another feature that this master suite offers.

Flowing on from the kitchen you will find a spacious open plan living and dining area that is flawlessly positioned between the kitchen and outdoor entertainment area, bringing the outdoors in and the indoors out, perfect for entertaining all year round.

Step outside to the lavish decked area, where you will find the perfect outlook with all you could want. Whether it be enjoying a dip in the pool, relaxing in the spa, enjoying a drink by the fire or taking in the wonderful outlook and serenity of acreage living that this property has to offer, it truly does tick all the boxes.

Key features this property offers -

INSIDE

5 BED | 2 BATH | 3 CAR

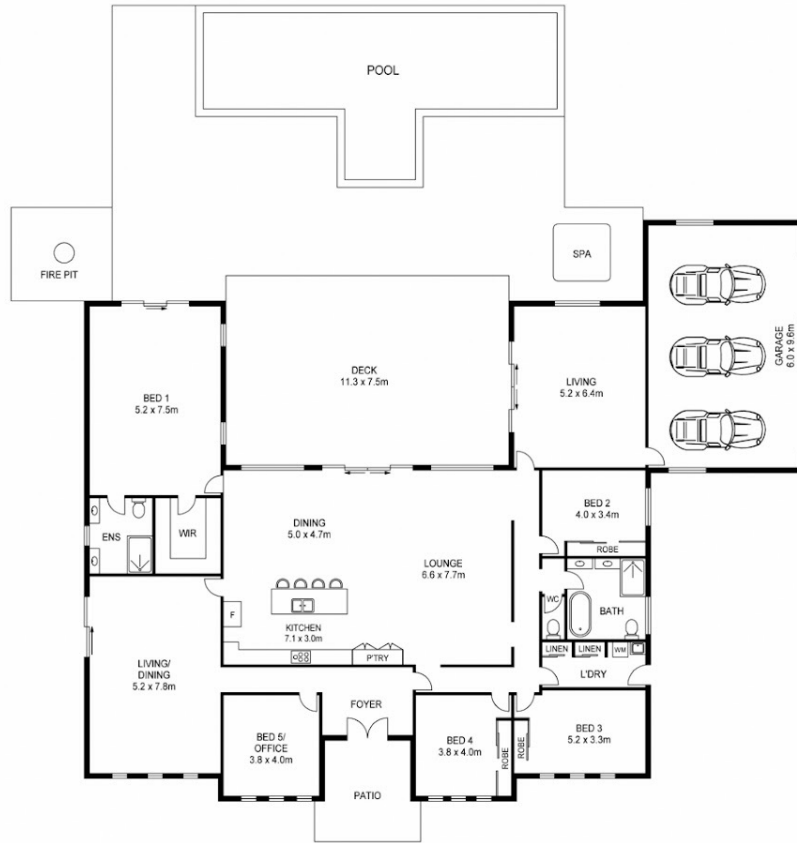
PRICE:
\$1,595,000

OPEN FOR INSPECTION:
N/A

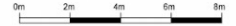


Nick Schloss
0439383036

nick@schlosspropertygroup.com.au
schlosspropertygroup.com.au



APPROX FLOOR AREA : 520m²



For illustrative purposes only. Not an engineering plan.

Whilst all effort is taken to be correct, this plan may contain inaccuracies or omissions and should be used only as a guide. No representations are made as to the condition, operability or legal status of anything depicted.

Disclaimer: Please note this floor plan is for marketing purposes and is to be used as a guide only. All dimensions are estimates only and may not be exact measurements.