



SOLD

ONE OF ONLY FOUR SKY HOMES!!

Boasting the most desirable aspect & with expansive views over the River and beyond, this waterfront Apartment offers a unique lifestyle that is highly coveted by the astute property purchasers.

There are only Four (4) of these Sky Homes in the entire Complex...this particular one is located on top of the most enviable & private building within the entire complex.

With a superior floor plan that offers a level of versatility to accommodate your lifestyle, this palatial Sky Home is move in ready, offering up a colour palette & quality features that invites the immersion of your personal décor.

Designed over an area of approx. 161m2, this apartment's floor plan encompasses 3 generous Bedrooms, a light infused Open Plan Living & Dining area, a divine Galley Kitchen as well as a larger than expected Laundry.

The Master with its luxury Ensuite Bathroom & Walk In Robe, commands unimpeded Northeast Views over wide water with direct access to the fully tiled balcony,

Both Bedrooms 2 & 3 boast have spacious Built in Robes & lovely views across the landscape Gardens and the Internal Lake.

There is nothing quite like being greeted by superb Sunrises each day from the picturesque balcony which is also the perfect size for entertaining family & friends at any time of the day.

Rounding out this attractive property offering is two Secure Basement Car Parks with generous & convenient Visitors Parking for your guests.

Location is everything & size is a premium, and with its pure value for money status, Ilanah Aqua has become a "Destination of Choice"....resulting in Apartments being sold within weeks of being listed.

Ilanah Aqua is made up of predominantly owner/occupiers of a mature & discerning age, making this community-based complex very popular with its residents and aspiring purchasers.

You are merely minutes from all the lifestyle amenities & essential services that Sanctuary Cove & Hope Island are known for.... Shopping Villages, excellent Dining Options, Golf Courses, Theme Parks.... the list goes on.

Viewings are by appointment only so book your personal inspection without delay.

A Summary Features:

- East-Northeast North Facing on the Canal
- Fourth Floor, Secure Coded Lift Access to all floors from Basement Carpark

3 BED | 2 BATH | 2 CAR

PRICE:
\$1,260,000

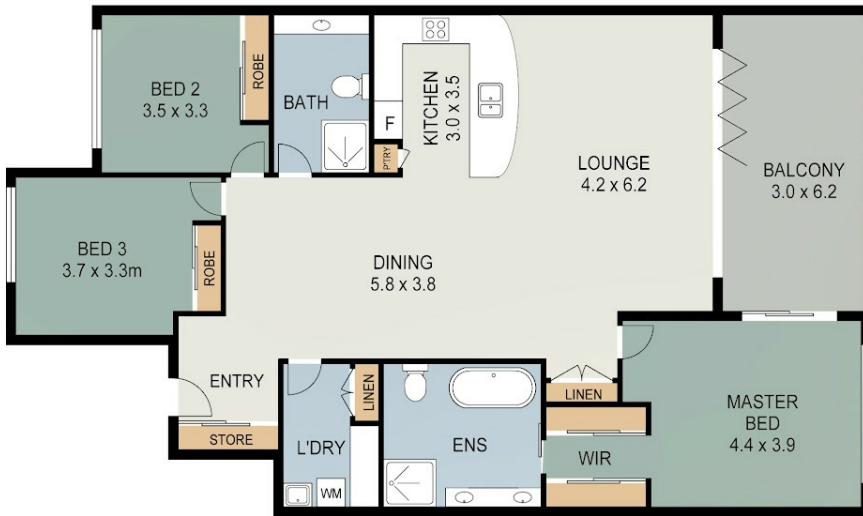
OPEN FOR INSPECTION:
N/A



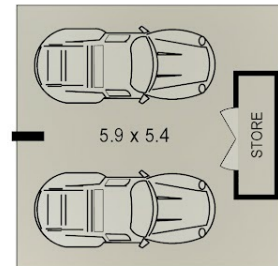
Margaret Baszko
0414806645

margaret.baszko@atrealty.com.au

www.atrealty.com.au



Fourth Floor



Secure Basement

442 / 3 Pendraat Parade, HOPE ISLAND

3 | 2 | 2 | Int : 142m²
Ext : 19m²
Total : 161m²

All measurements shown in metres are approximate and are for illustration purposes only. It should not be considered 100% accurate. Interested parties should rely on their own enquiries.

Disclaimer: Please note this floor plan is for marketing purposes and is to be used as a guide only. All dimensions are estimates only and may not be exact measurements.