



SOLD

SIMPLY MOVE IN ! AND START LIVING YOUR BEST LIFE !

Impressive Family Home set on an approx 850 sqm allotment in a lovely leafy location. Situated in the heart of Modbury this spacious and well maintained property offers it all !

This simply Stunning Home comprises of,

- * Absolutely huge living and dining areas with formal lounge, large dine, also massive family room and rumpus / games room opening up to the large outdoor entertaining area.
 - * Incredible Gourmet Style Kitchen with all new appliances, dishwasher, walk in pantry, and tons of cupboards (Mum will Love it)
 - * There are four generous bedrooms plus study/office or 5th bedroom. Main bedroom has ensuite and walk in robe.
 - * The main bathroom is 3 way with separate vanity area, separate toilet and 2 linen cupboard. The laundry is also huge.
 - * The outdoor area is amazing with undercover parking for approx 5 cars, including a fabulous secure workshop, extra carport and tons of gated secure parking for caravan, boat and extra vehicles. Would be ideal for business operating from home.
 - * The gardens are totally immaculate with a spacious patio/ pergola entertaining area.
 - * Extra features include ducted gas heating, ducted air conditioning, beautiful tiled floors to family room and outdoor blinds to patio area.
 - * This Modbury property is in a sought after location just around the corner from Tea Tree Plaza, shops, cafes, restaurant, cinema and within walking distance of O'Bahn & Modbury Hospital.
 - * This is an outstanding family home not to be missed !
 - * Call Terry Webster on 0419 993 357 for more details.
- RLA 269823

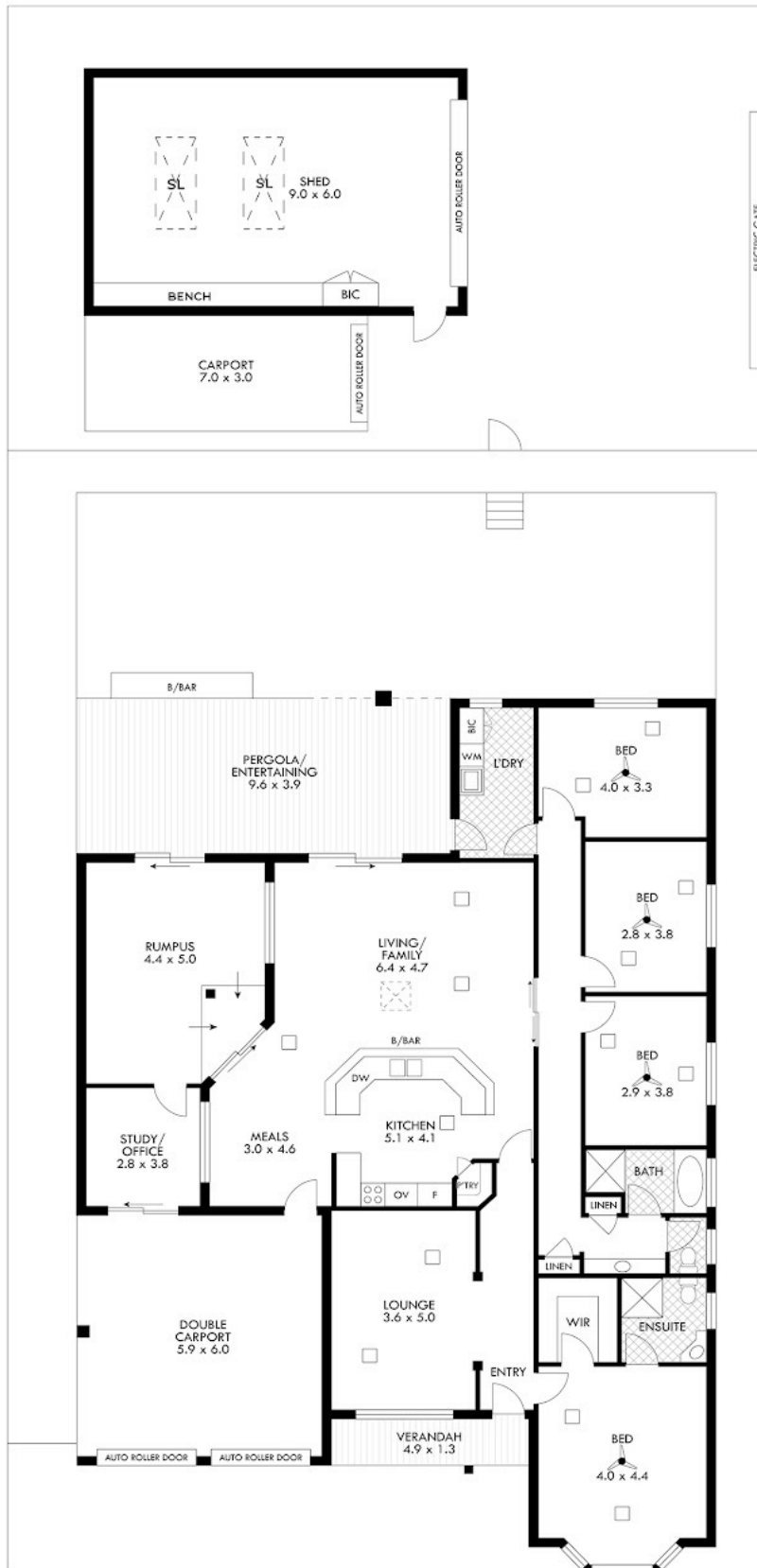
5 BED | 2 BATH | 5 CAR

PRICE:
\$930,000

OPEN FOR INSPECTION:
N/A



Terry Webster
0419993357
terrywebster@atrealty.com.au
www.atrealty.com.au
RLA: 269823



AREA (Approx.)	m ²
Ground Floor	224.8
Verandah	5.8

Disclaimer: Please note this floor plan is for marketing purposes and is to be used as a guide only. All dimensions are estimates only and may not be exact measurements.

TOTAL	382.5 approx sqm
-------	------------------

scales in meters. This drawing is for illustration purposes only. All measurements are approximate and details intended to be relied upon should be independently verified.

N

Terry Webster
0419993357

11 Brufen Avenue, Modbury

terrywebster@atrealty.com.au

www.atrealty.com.au

@realty